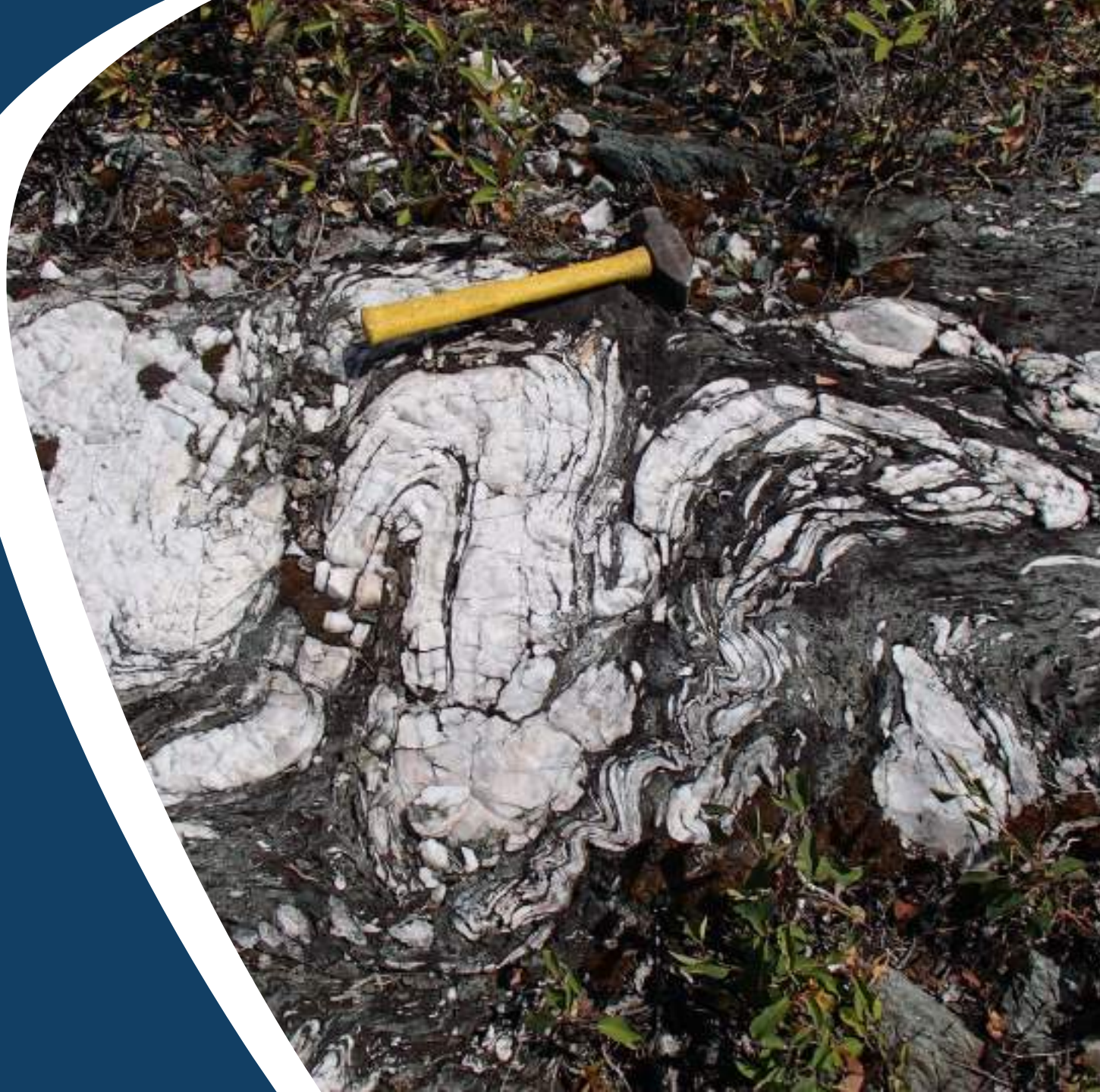




# Reimagining the Historic Rice Lake Gold Camp

TSX-V: AUMB





# Forward Looking Statement

## DISCLAIMER

The information provided in this presentation is not intended to be a comprehensive review of all matters concerning 1911 Gold Corporation ("1911 Gold" or, the "Company") and should be read in conjunction with all other disclosure documents of the Company. The information contained herein is not a substitute for detailed investigation or analysis. No securities commission or regulatory authority has reviewed the accuracy or adequacy of the information presented.

## FORWARD-LOOKING STATEMENTS

This presentation contains statements and information that constitute forward-looking information within the meaning of Canadian securities legislation, referred to herein as "forward-looking statements". These statements include, among others, statements with respect to the amount of mineral resources, gold and silver price assumptions, exchange rate assumptions, the Company's potential plans and operating performance and exploration and development potential of its projects; opportunities to enhance the value of the existing True North Project, capital cost reduction opportunities and other plans and objectives of 1911 Gold. These statements address future events and conditions and, as such, involve known and unknown risks, uncertainties and other factors which may cause the actual results, performance or achievements to be materially different from any future results, performance or achievements expressed or implied by the statements. Such factors include, among others and in addition to those described elsewhere in this presentation, delays in obtaining or inability to obtain required government or other regulatory approvals, permits or financing, the risk of unexpected variations in mineral resources, grade or recovery rates, failure of the plant, equipment, processes or infrastructure to operate as anticipated, of accidents, labour disputes, and unanticipated delays in completing other development activities, the risk that estimated costs will be higher than anticipated and the risk that the proposed mine plan and recoveries will not be achieved, equipment breakdowns and bad weather, the timing and success of future exploration and development activities, exploration and development risks, mineral resources are not as estimated, title matters, third party consents, operating hazards, metals prices, political and economic factors, actions by governmental or regulatory authorities including changes in tax laws or incentive programs, competitive factors and general economic conditions. Actual results may vary from those implied or projected by forward-looking statements and therefore investors should not place undue reliance on such statements. The forward-looking statements herein are made as of the date of this presentation and the Company expressly disclaims any intention or obligation to update or revise any forward-looking statements whether as a result of new information, future events or otherwise except as required by applicable securities legislation. The Technical Report for the True North Mine, Bissett, Manitoba, Canada, NI 43-101 Mineral Resource Technical Report, with an effective date of March 31, 2018, can be viewed at [www.sedar.com](http://www.sedar.com) under the 1911 Gold Corporation profile. All historical scientific and technical information relating to the Ogama-Rockland Project in this presentation on and derived from the technical report titled "A Technical Review of the Ogama-Rockland Deposit on the Rice Lake Property, Manitoba, Canada for Bison Gold Resources Inc.", dated November 15, 2013, prepared by Andrew M. Chater, Ph.D., P.Geo., Senior Associate Geologist, Jamie Lavigne, M.Sc., P.Geo., Senior Associate Geologist and Clifford J. Duke, P.Eng., Senior Associate Geological Engineer of Watts Griffis and McOuat Limited (the "Technical Report"). The Technical Report is available under Bison Gold Resources Inc.'s issuer profile on SEDAR at [www.sedar.com](http://www.sedar.com). The Company considers Bison Gold Resources Inc.'s resource estimate to be a historical estimate and a qualified person has not done sufficient work to classify the historical estimate as a current mineral resource and the Company is not treating the historical estimate as current mineral resources. Although the Company believes this source to be generally reliable, such information is subject to interpretation and cannot be verified with complete certainty due to limits on the availability and reliability of raw data, the voluntary nature of the data gathering process and other inherent limitations and uncertainties. There are numerous uncertainties inherent in historical estimates, which are subject to all of the assumptions, parameters and methods used to prepare such historical estimates and reference is made to the full text of the Technical Report with respect thereto. There are no other recent estimates or data available to the Company as of the date of this presentation and a detailed exploration program is required to be conducted by the Company in order to treat the historical estimate as a current mineral resource.

## TECHNICAL DISCLOSURE

The technical information in this presentation has been approved by Dr. Scott Anderson, Ph.D., P.Geo., Vice President of Exploration. Dr. Scott Anderson is a Qualified Person for the purposes of NI 43-101 as well as a Competent Person (as defined in the JORC Code, 2012 edition) as a practicing member of Engineers Geoscientists Manitoba.



# About Us

A junior gold producer leading the next generation of precious metals exploration and development.



Manitoba		
<b>411</b>	<b>55,096</b>	<b>\$68.8M</b>
DISPOSITIONS	HA.	CREDITS

Ontario		
<b>122</b>	<b>2,550</b>	<b>\$968K</b>
DISPOSITIONS	HA.	CREDITS

## Top Tier Exploration & Mining Jurisdictions

Manitoba & Ontario: mining friendly, with proven regional potential for world-class Au deposits

## Experienced Management & Technical Team

Regional expertise and proven track record of developing mines and delivering shareholder value

## District-Scale Land Position

Consolidated a historically fragmented land position on the world-class Rice Lake gold belt

## Significant Infrastructure in Place

Fully permitted and operational mill (1,300 tonnes-per-day) and tailings facility

## Comprehensive Exploration Strategy

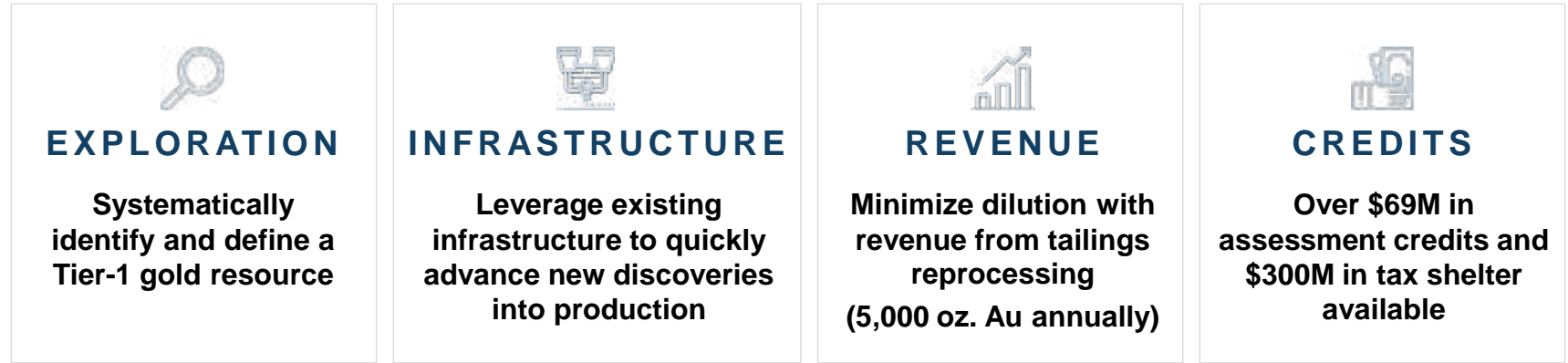
Opportunity for significant value creation through new discoveries in underexplored areas

## Revenue Stream from Reprocessed Tailings

Healthy cash balance and a steady cash flow; Well-funded exploration program



# Corporate Strategy





# Focused on High-Grade Gold Exploration

## Why the Rice Lake Belt?



### Regional Geology

Well-defined accretionary margin (orogenic Au potential)

Crustal-scale faults (>70km of strike length)

Favourable host rocks and structure

Widespread gold mineralization, alteration



### Consolidation

Historically fragmented land position

High-resolution aeromagnetic coverage, but no unified compilation

No modern, systematic, regional-scale exploration



### Underexplored

Previous work had narrow focus (historical showings)

Only localized geochemical data

Areas with surficial cover largely unexplored



### Infrastructure

Easy access to all weather road network

Existing permitted mill and tailings facility

Over 100 years of exploration and development history to build on



### Management

Management technical team with strong local and regional knowledge

Comprehensive exploration strategy

Systematic approach



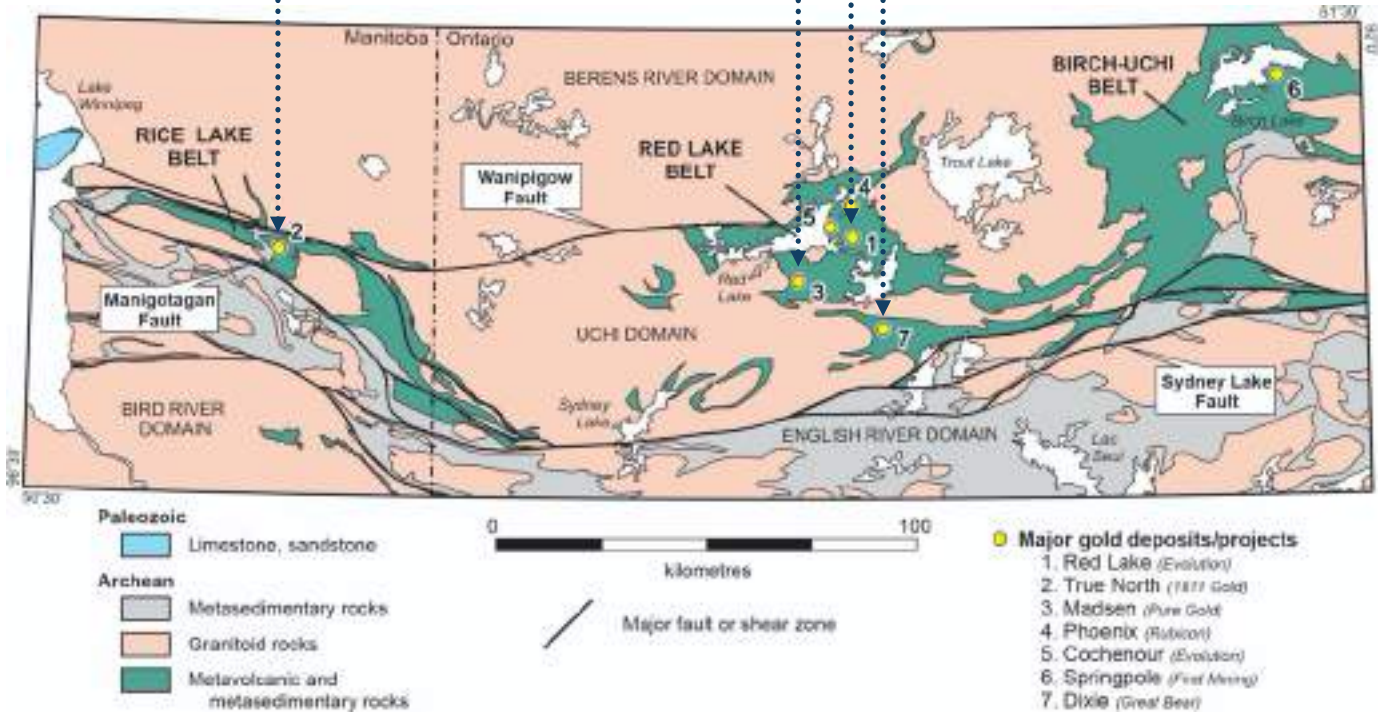
(Red Lake, Cochenour)



# Regional Setting

Located in the Birch-Uchi geological domain – Tier 1 in Canada in terms of total gold endowment

- **Classic Archean greenstone belt**
  - Diverse favourable host rocks
- **Red Lake-equivalent geology**
  - Comparable 300-million-year history
- **Highly favourable crustal architecture**
  - 2.7 billion-year-old plate margin
- **Regional fluid conduit (Wanipigow Fault)**
  - >150 kilometre length (>70 km AUMB)
- **World-class Au potential**
  - >40M oz. Au endowment

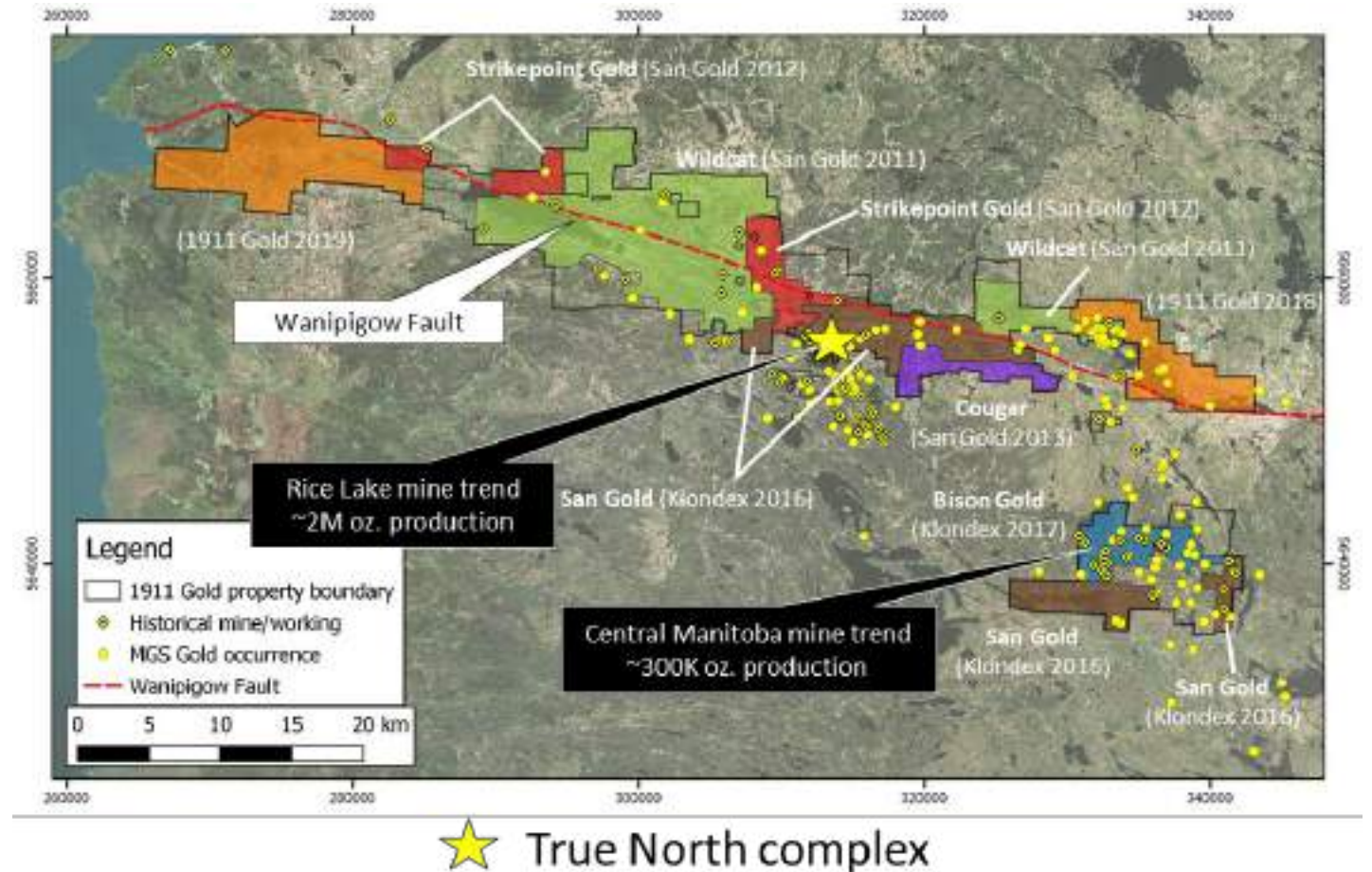




# Consolidating the Rice Lake Belt

## Land Position

- > Historically fragmented
- > Consolidation since 2011:
  - San Gold acquired Wildcat (2011)
  - San Gold acquired Strikepoint (2012)
  - San Gold acquired Cougar (2013)
  - Klondex acquired San Gold (2016)
  - Klondex acquired Bison Gold (2017)
  - 1911 Gold staking (2018-2019)
- > Contiguous land packages: the largest ever assembled for Rice Lake belt (54,000 hectares)
- > Includes two major mine trends: Rice Lake and Central Manitoba
- > Covers more than 70 kilometre length of the main crustal-scale break (Wanipigow Fault)



# Exploration Methodology

- > Science-based prediction/detection strategy
- > Systematic, disciplined approach
- > Well-managed, cost-effective execution

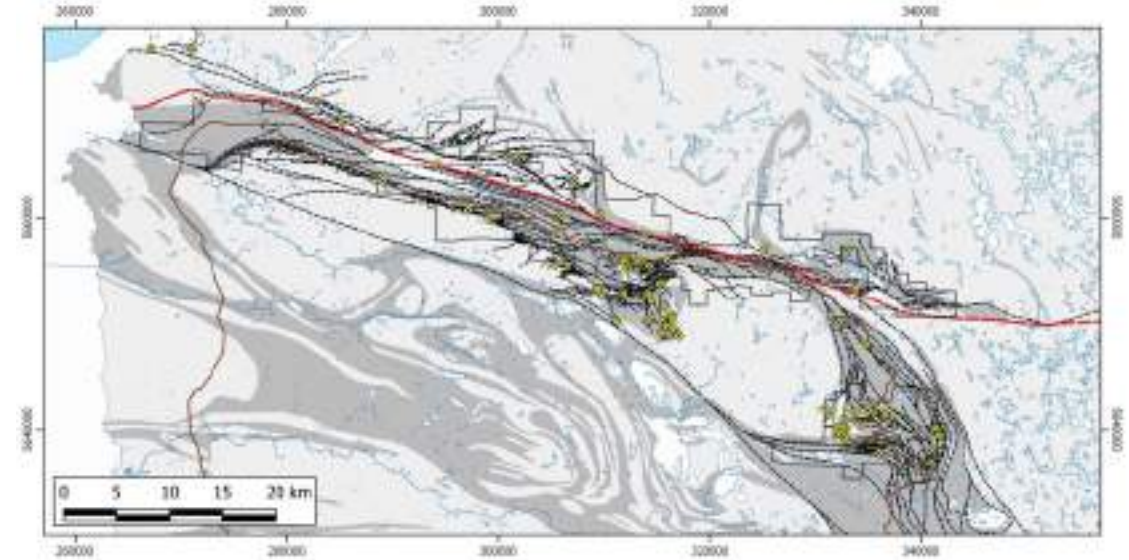
## Definition of Prospective Areas

- Interpretation of regional aeromagnetic & LiDAR data
- Compositionally favourable host rocks
- Complex, optimally-oriented, structures
- Gold occurrences, alteration

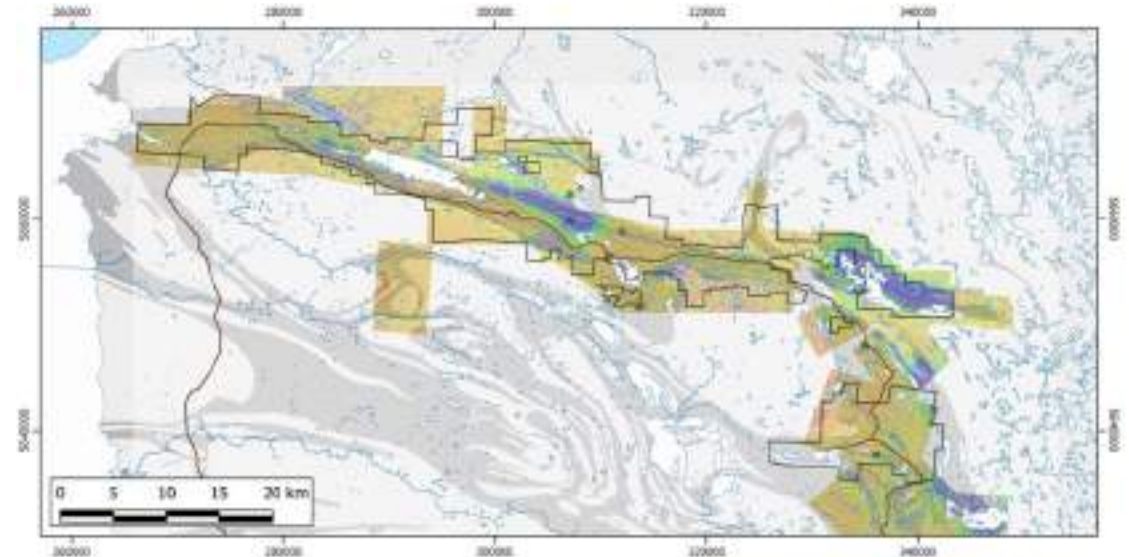
## Delineation of Favourable Structures

- Bedrock mapping, prospecting
- Structural interpretation (aeromagnetic and LiDAR)
- Surficial geochemistry (humus and spruce bark)
- Ground geophysics (IP, VLF-EM, MAG)
- 3D modeling (Leapfrog)

REGIONAL STRUCTURE



MERGED AND LEVELED HR AMAG





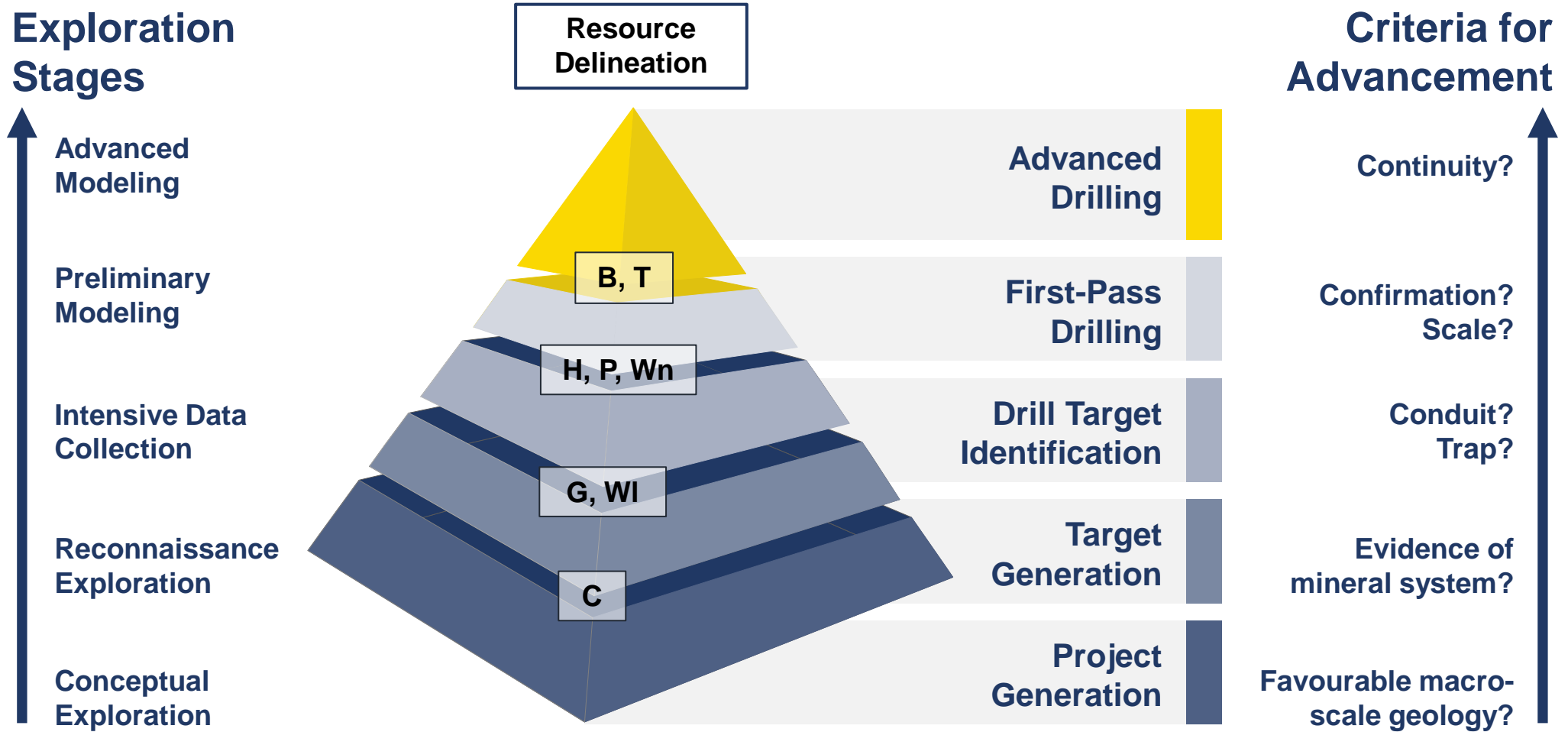


# Advancing To Discovery

**LEGEND**

**Active Projects:**

- Bidou (B)
- Currie's Landing (C)
- Gold Horse (G)
- Horseshoe (H)
- Poundmaker (P)
- Tinney (T)
- Wallace (WI)
- Wanipigow East (Wn)



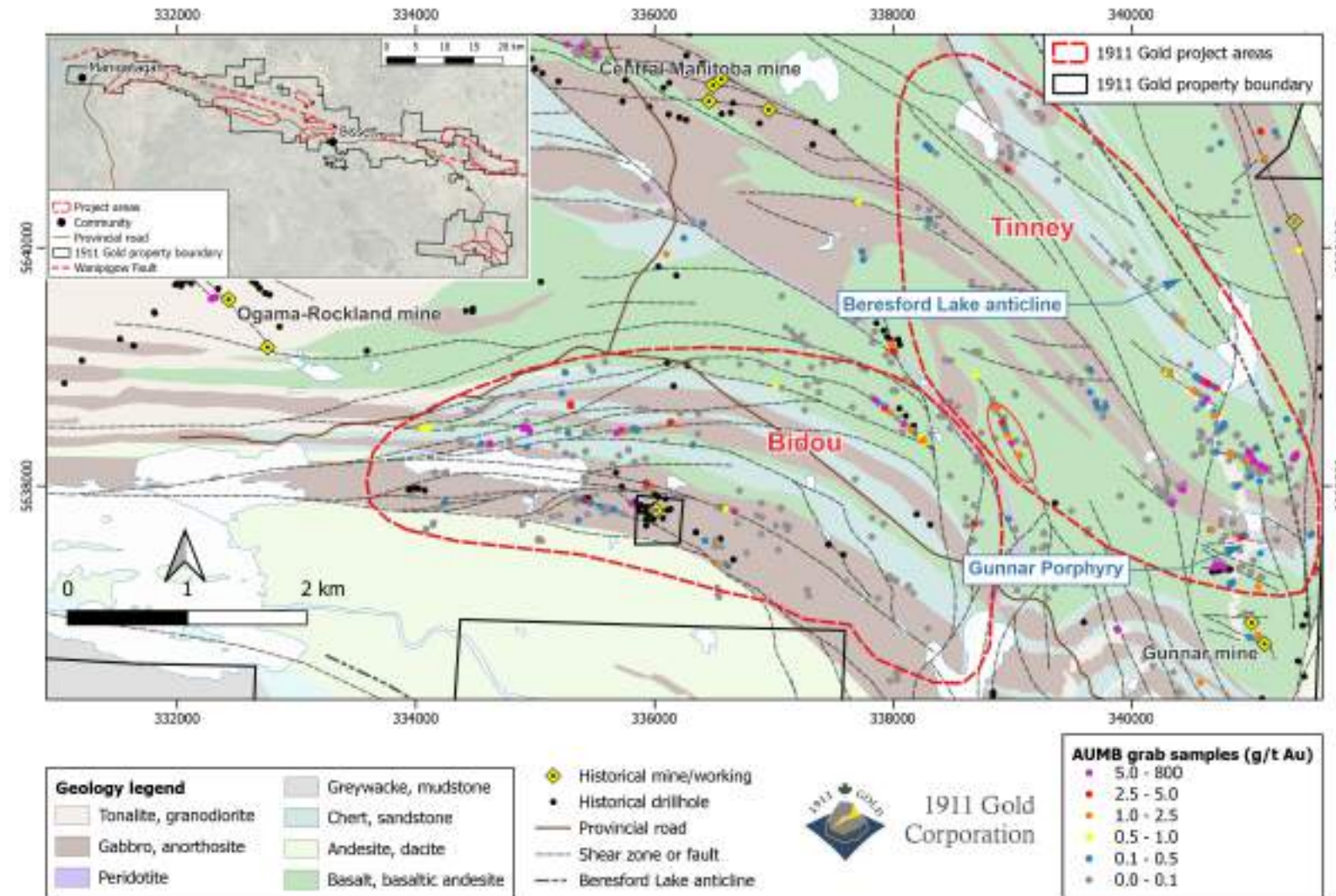


# Bidou & Tinney Projects

## Highly-prospective Setting

- Excellent host rocks
- Regional-scale anticline
- Kilometre-scale shear structures
- High-grade gold showings
- Underexplored, with minimal previous drilling

Compelling evidence of a robust, kilometres-scale, mineral system



# Bidou Project

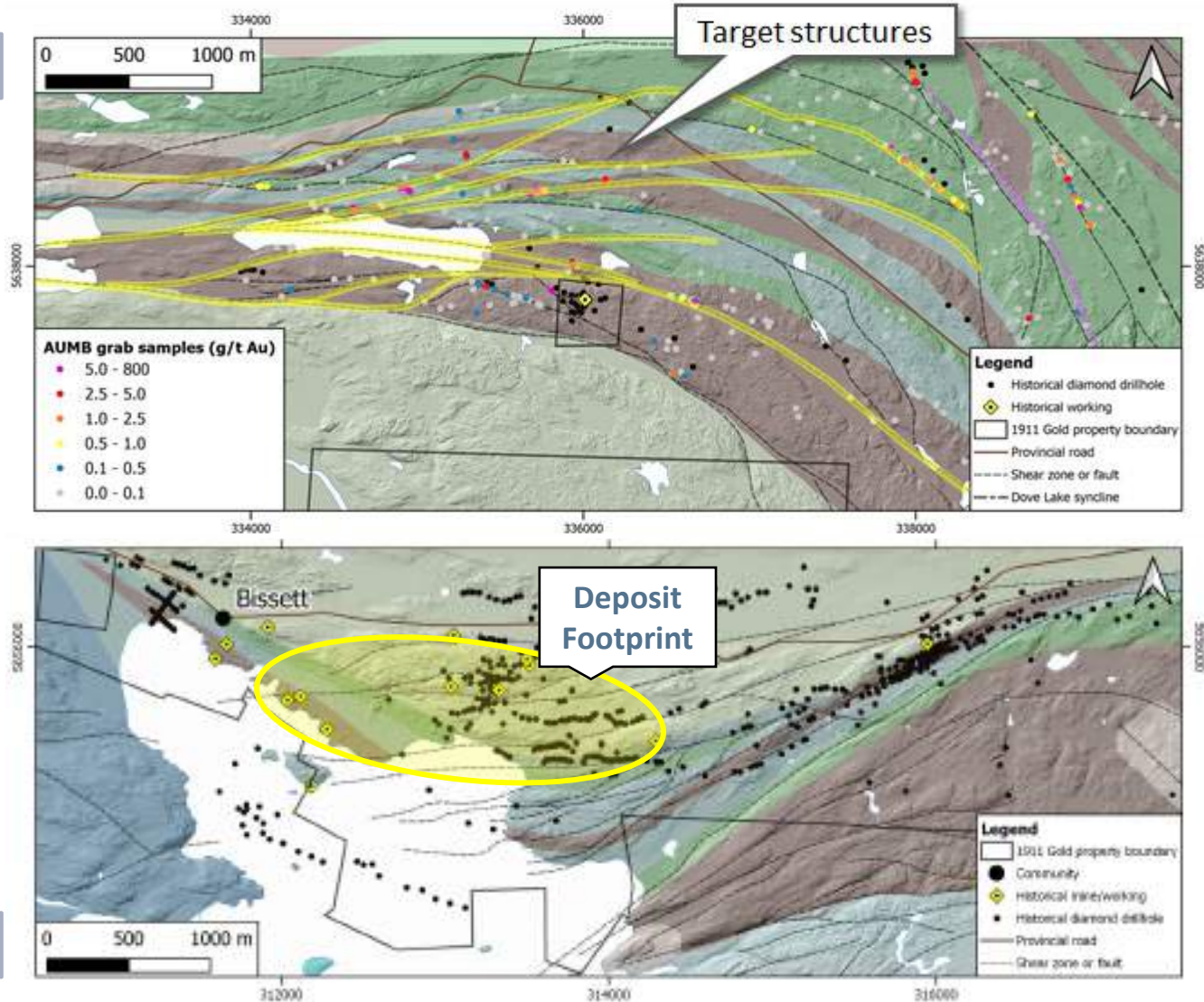
**Bidou Project**

Analogous to the True North Gold Mine (+2M oz. produced) based on the following criteria:

- > **Geology:**
  - Layered gabbro sills, basalt flows, interflow sediments
  - Felsic porphyry intrusions & flows
- > **Structure:**
  - Northeast-trending shear structures
  - Sense and timing of shearing
- > **Mineralization:**
  - Fault-controlled, quartz-carbonate vein systems
  - Gold-rich (low base metals)

**True North**

## Simplified Geological Maps Shown at Same Scale



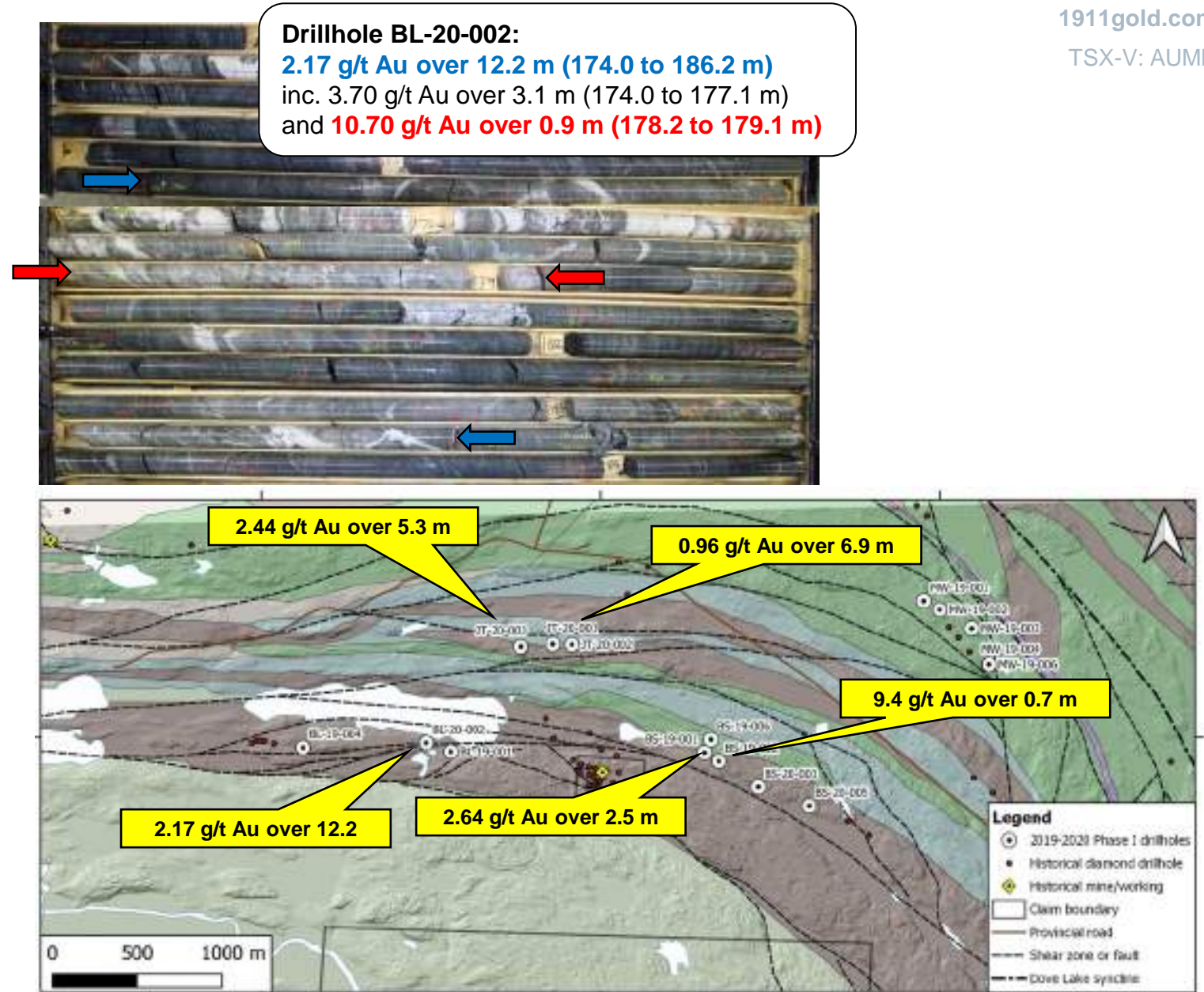


# Bidou Project

## Phase I Exploration Drilling Program (Q4 2019 - Q1 2020)

- First-pass drilling of 4 targets
- Several parallel structures confirmed
- Consistent gold intercepts over significant widths
- Various styles of mineralization & alteration (multiple mineralizing events)
- High-grade gold intercepts

**Demonstrated Au potential along multiple, untested, kilometre-scale structures**

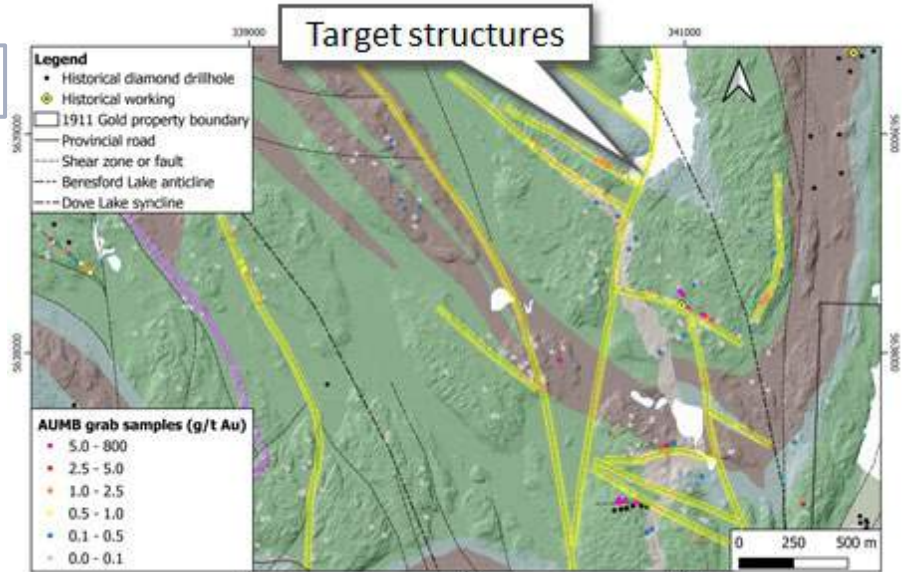


# Tinney Project

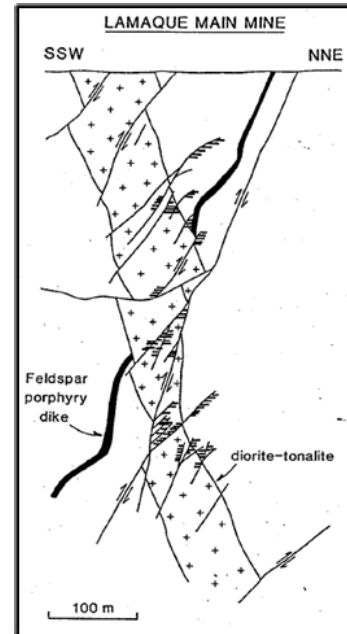
Similar geological characteristics to the Sigma-Lamaque (10M oz. Au) and Kalgoorlie (60M oz. Au) deposits based on the following criteria:

- > **Geology:**
  - Gabbro sills, basalt flows, cherts
  - Felsic porphyry dikes
- > **Structure:**
  - Regional-scale fold structure
  - Faults/shears cutting porphyry intrusion
- > **Mineralization:**
  - Steep and shallow vein systems
  - Quartz-tourmaline mineralogy

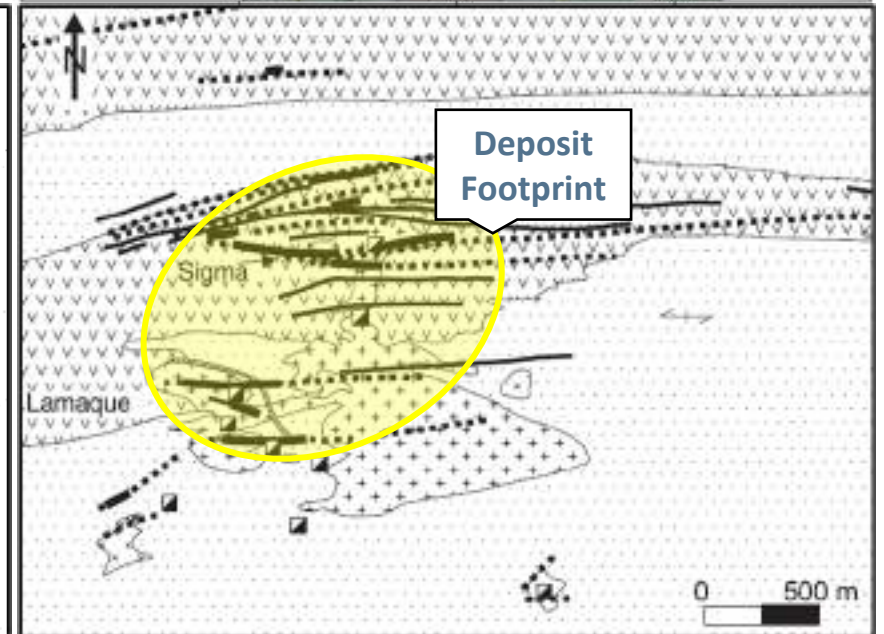
**Tinney Project**



Simplified Geological Maps Shown at Same Scale



**Sigma-Lamaque**

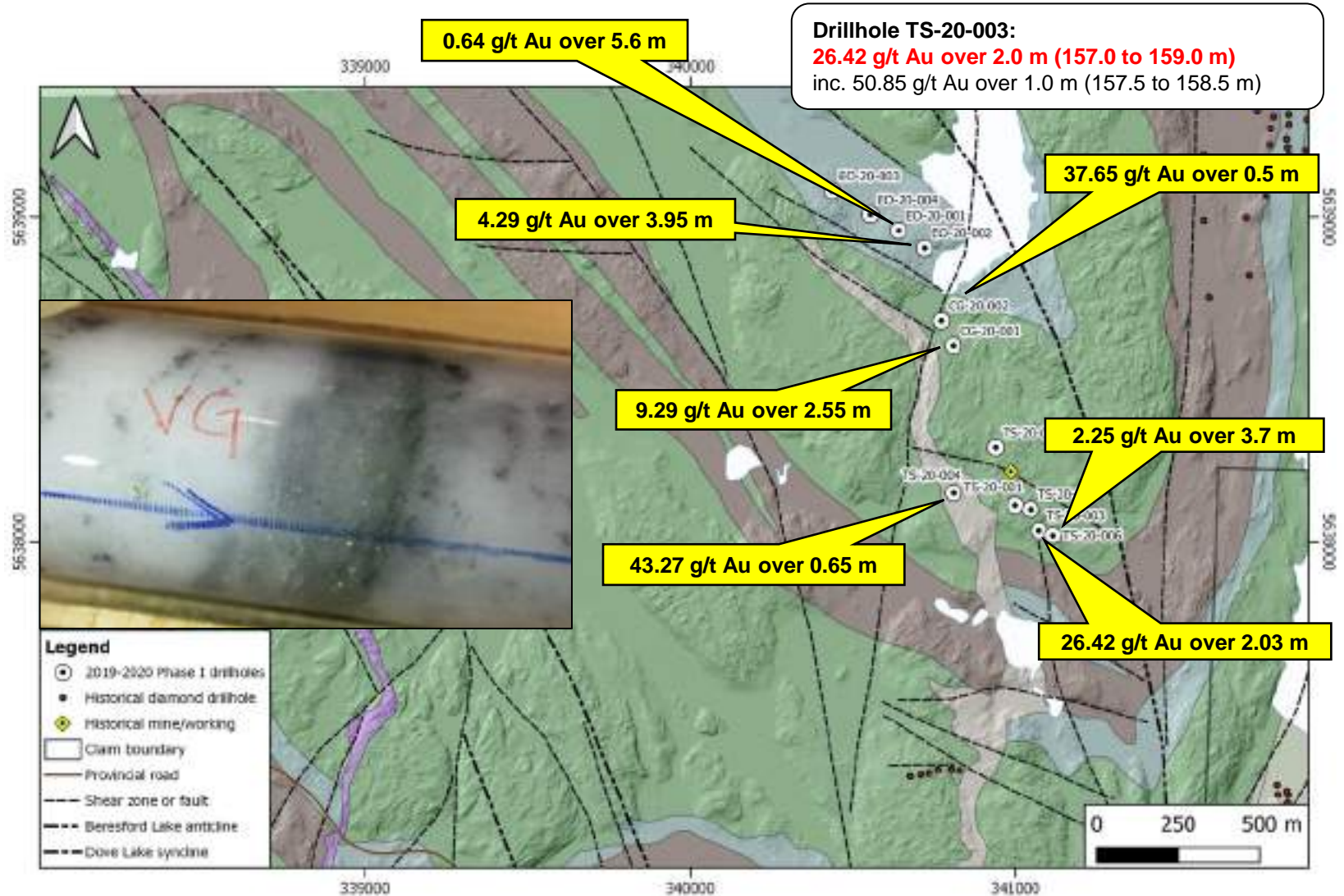


# Tinney Project

## Phase I Exploration Drilling Program (Q42019 - Q12020)

- First-pass drilling of 3 targets
- Gunnar porphyry verified to depth
- Multiple intersecting structures
- Sheeted vein systems in porphyry
- Thick zones of intense alteration
- High-grade gold intercepts

**Demonstrated Au potential in the core of a belt-scale fluid conduit (Beresford Lake anticline)**

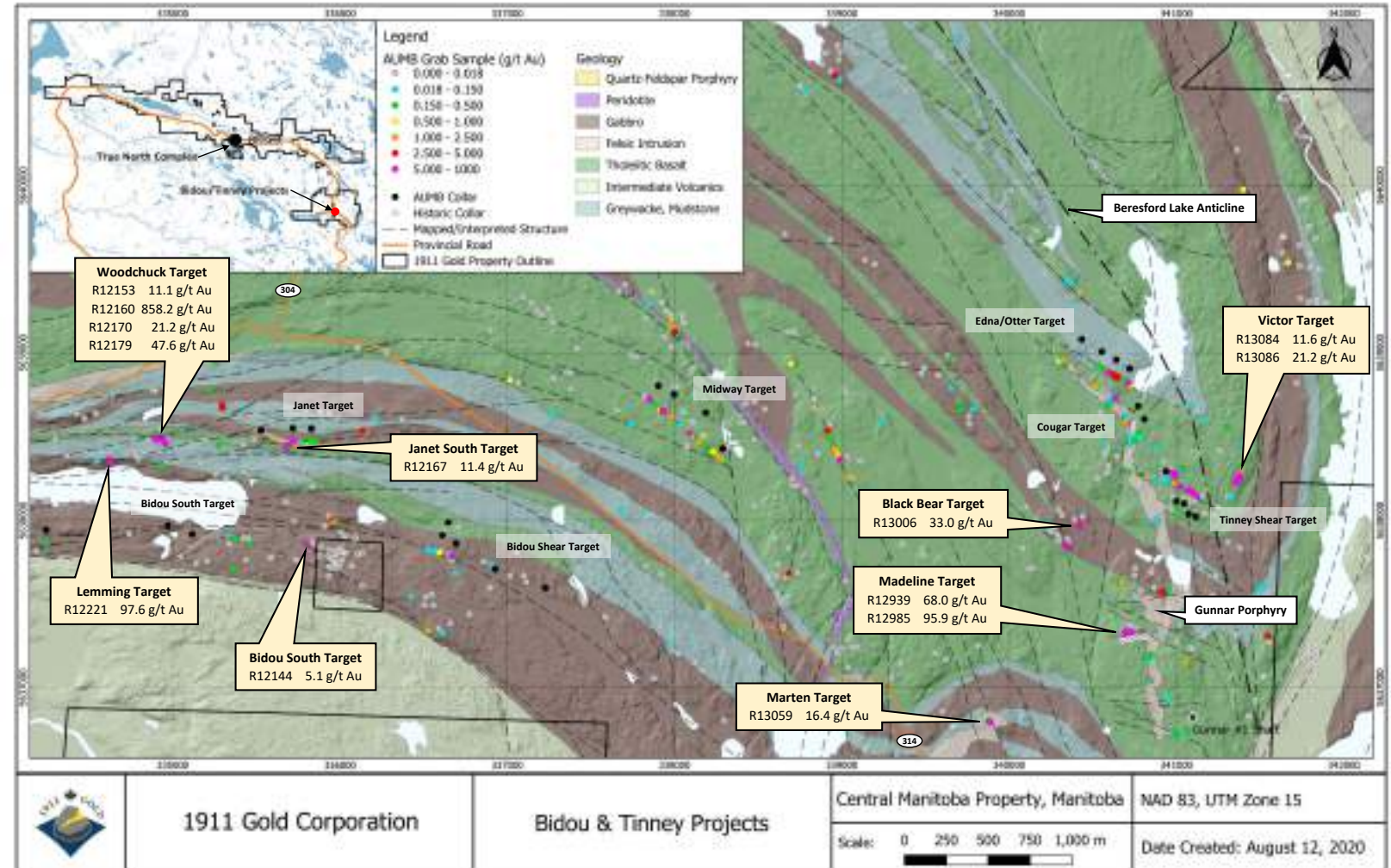


# Exploration Program

Driving Shareholder Value:  
Systematic field exploration

- > Successful 2020 field program
- > Numerous high-grade targets
- > Multiple project areas
- > Integration, analysis and 3D modeling to define targets, and efficiently advance projects to drill testing

## New High-Grade Showings with up to 858 g/t Au from Grab Samples





# Exploration Program

## Driving Shareholder Value: Phase II Exploration Drilling

➤ Commenced Nov 1, 2020

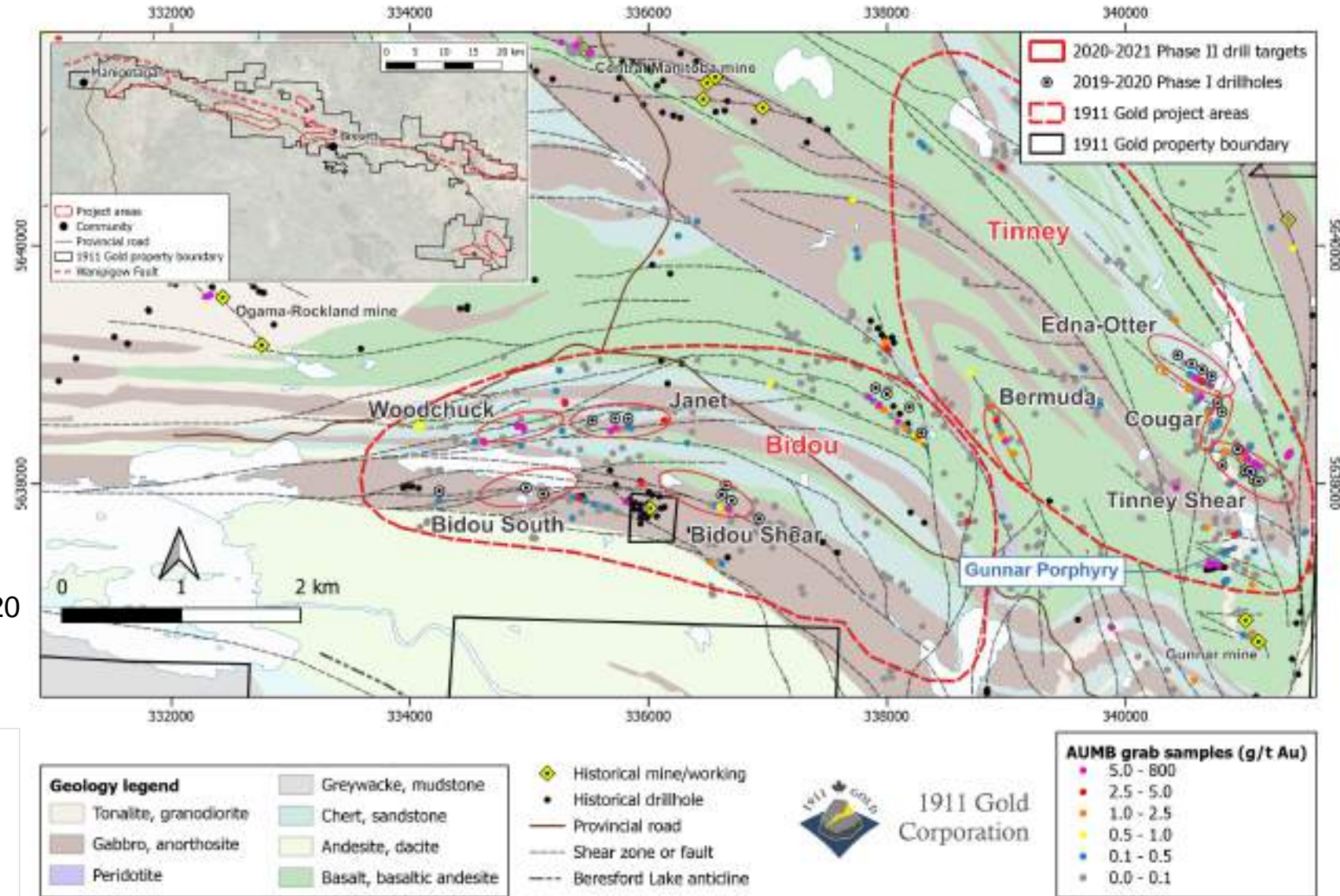
➤ 12,000 metres of drilling

- 7,000 m follow-up @ Tinney
- 4,000 m follow-up @ Bidou
- 1,000 m first-pass drilling on new targets generated in 2020

➤ Fully funded, permitted

**Systematic drilling of large-scale fluid conduits with clear potential to host significant gold**

## Tinney and Bidou projects







# Horseshoe, Wanipigow East and Poundmaker projects

# Exploration Program

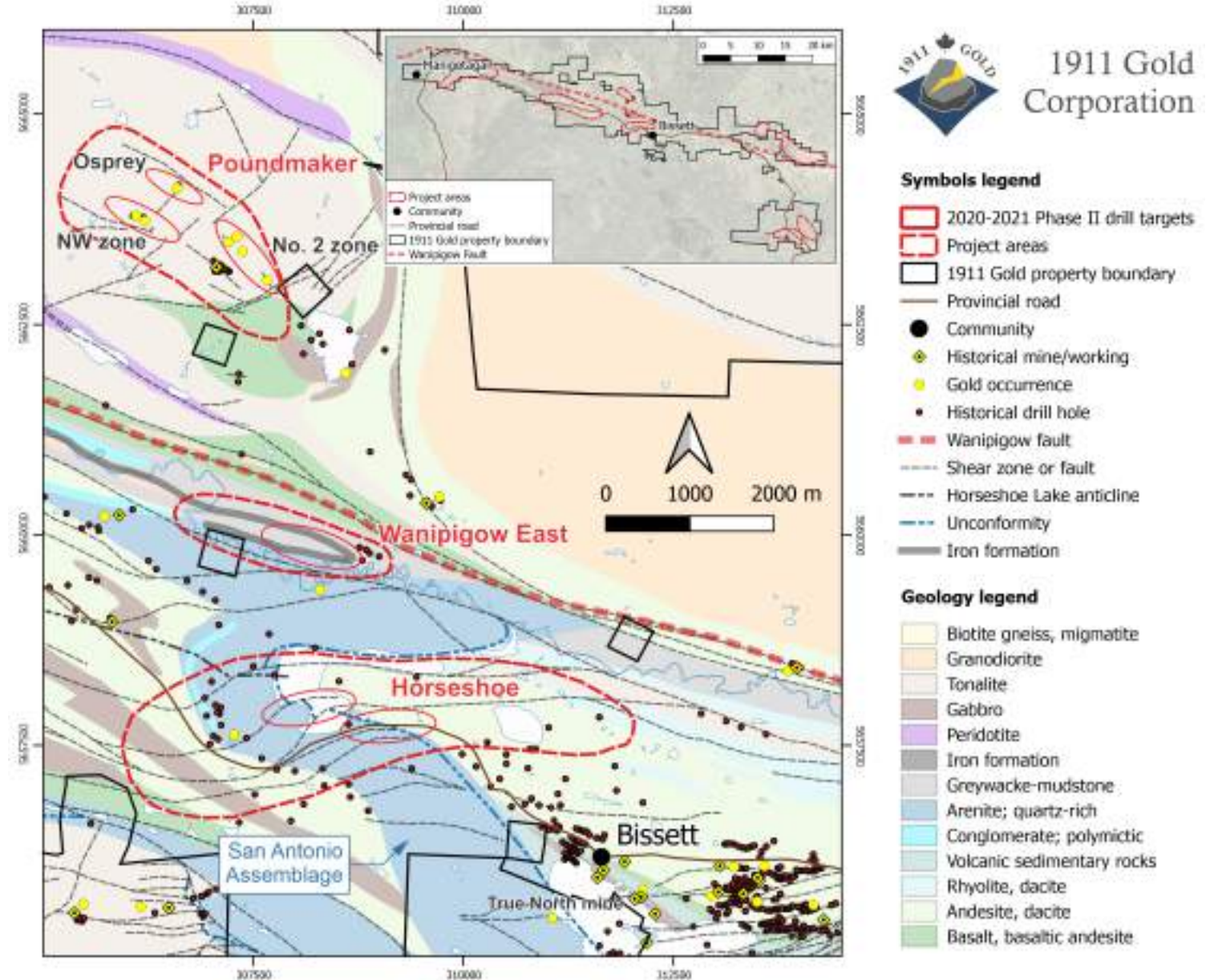
## Driving Shareholder Value: Phase II Exploration Drilling

- > Commencing Dec, 2020
- > 6,000 metres of drilling
  - o 3,000 m first-pass @ Horseshoe
  - o 1,000 m first-pass @ Wanipigow E.
  - o 2,000 m first-pass @ Poundmaker
- > Fully funded, permitted

**Systematic drilling of large-scale fluid conduits with clear potential to host significant gold**



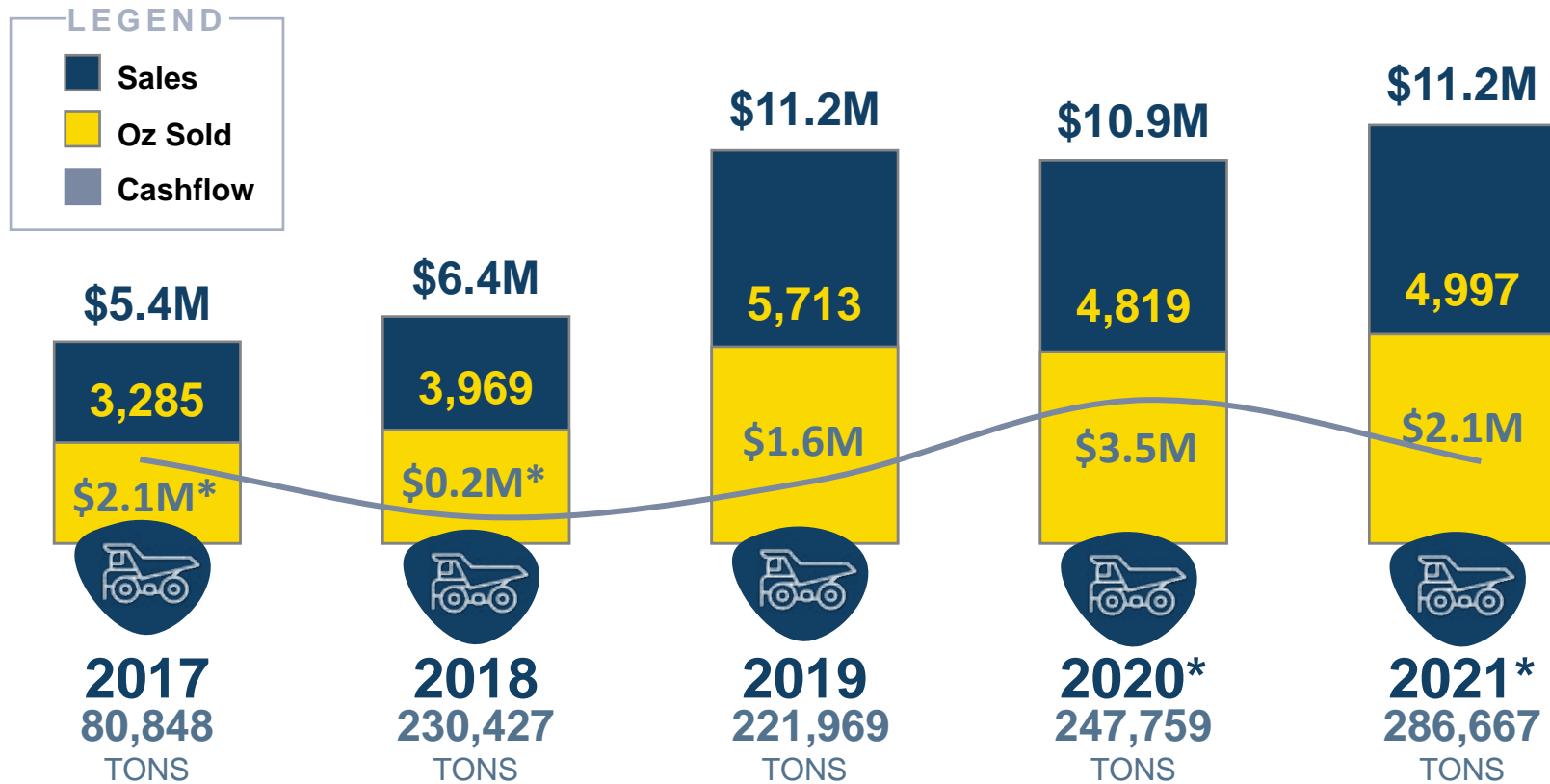
1911 Gold Corporation





# Tailings Reprocessing

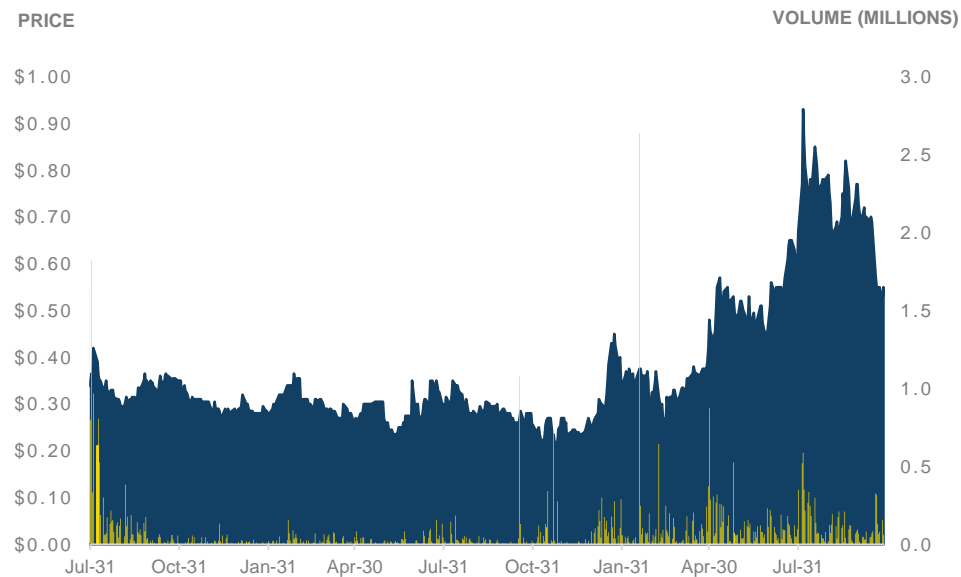
Cashflow to fund overhead and minimize dilution





# Capital Structure

## SHARE PERFORMANCE



## CAPITAL STRUCTURE

Shares Outstanding	46,395,730
Options (W. Avg Life – 3.7 years, \$0.45)	3,988,334
Warrants (W. Avg Life – 5.2 years)	2,990,233
Restricted Share Units	213,330
Fully-Diluted	53,587,627
Market Capitalization (20-d VWAP)	\$29M
Share Price (20-d VWAP)	\$0.62
Daily Avg Vol (20-d)	94,270

Well-funded To Execute Plans

Cornerstone Strategic Investor

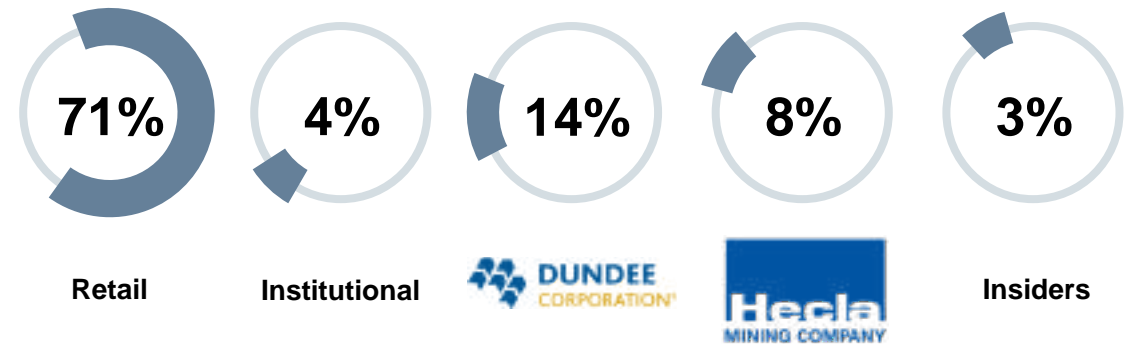
Strong Insider Support

Cash Position

**\$9.0M**

September 30, 2020

## OWNERSHIP





# Strategic Infrastructure

## True North Complex

- > **Fully Permitted:** 1,300 tonnes per day mill and mine site infrastructure
- > **Significant Asset Value:** +\$200M replacement cost; reduced timeline from discovery to production
- > **Currently Generating Revenue:** +\$10M in revenue annually
- > **Underground Infrastructure:** historical production of 2 million ounces; significant potential to expand
- > **Substantial Tax and Credit Pools:** \$69M in assessment credits and over \$296M in tax pools available
- > **Centralized Location:** Historic operations suboptimal as a single-source facility; exploration to provide multiple ore sources





# Strategic Advantages



Key Strengths	1911 Gold Corporation	Other Exploration Companies
District scale exploration opportunity	✓	?
Condensed timeline to production	✓	✗
Capital expenditures required	LOWER	HIGHER
Currently generating revenue	✓	✗
Robust exploration model, strategy and methodology	✓	?



# Leadership



**RON CLAYTON**

President & CEO

Over 40 years of experience in the mining industry operating in senior executive roles, including acting as President and CEO of Tahoe Resources and as COO of Tahoe Resources during the successful build out of the Escobal mine.



**SHAUN HEINRICHS**

CFO

Over 20 years of experience in senior corporate finance roles with significant experience in reporting, strategic planning, capital markets and M&A.



**DR. SCOTT ANDERSON**

VP Exploration

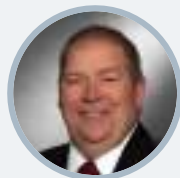
Over 30 years of experience in government geoscience, exploration, academia and consulting, specializing in structural geology, including a definitive study of the Rice Lake gold camp during his 17 years with the Manitoba Geological Survey.

## FOCUSED ON PERFORMANCE AND CORPORATE GOVERNANCE

### BOARD OF DIRECTORS



**MIKE HOFFMAN**  
Chair



**RON CLAYTON**  
President & CEO



**JAMIE HAGGARTY**  
Director



**SHASTRI RAMNATH**  
Director



**DAVID CHRISTENSEN**  
Director



# Why Invest in 1911 Gold?

- > **Clear Strategy**
- > **District-Scale Scope**
- > **Long-Term Outlook**



Exploration and Mining  
Friendly Jurisdiction



District-Scale  
Land Position



Permitted Mill Complex  
and Tailings Facility



Proven Regional Potential  
for World-class Au Deposits



Revenue Stream,  
No Debt



Strong Understanding  
of Deposit Model



Experienced Management  
and Technical Team



Comprehensive  
Exploration Strategy



Well-Funded  
Exploration Program



Opportunity for Significant  
Value Creation Through  
Discovery

**100%**

Controlled Land Package

**54,000**

Hectares of Upside

**\$68.8M**

Available Assessment Credits



**604.900.5620**

**IR@1911GOLD.COM**

---

Suite 1050, 400 Burrard Street  
Vancouver, British Columbia, Canada  
V6C 3A6

1911gold.com







1911gold.com

TSX-V: AUMB

# Appendix



# District History



## Birth of a New Gold District

- 1881: Gold discovered on Black Island
- 1890-91: First geological investigations
- 1911: Rice Lake gold discovery

## Early Mine Developments

- 1927-1937: Central Manitoba mine
- 1932-1968: Rice Lake (San Antonio) mine
- 1936-1942: Gunnar mine
- 1948-1951: Ogama-Rockland mine

## Subsequent Mine Developments

(San Antonio/Rice Lake/True North)

- 1980-1983: Brinco Mining Ltd.
- 1989-1998: Rea Gold Corp.
- 1998-2001: Harmony Gold (Canada) Inc.
- 2004-2015: San Gold Corp.
- 2016-2018: Klondex Mines Ltd.
- 2018-Present: 1911 Gold Corp.



Early days of exploration



San Antonio gold mine was established in 1926



Rice Lake prospect, 1927, J.S. De Lury

# Exploration Model

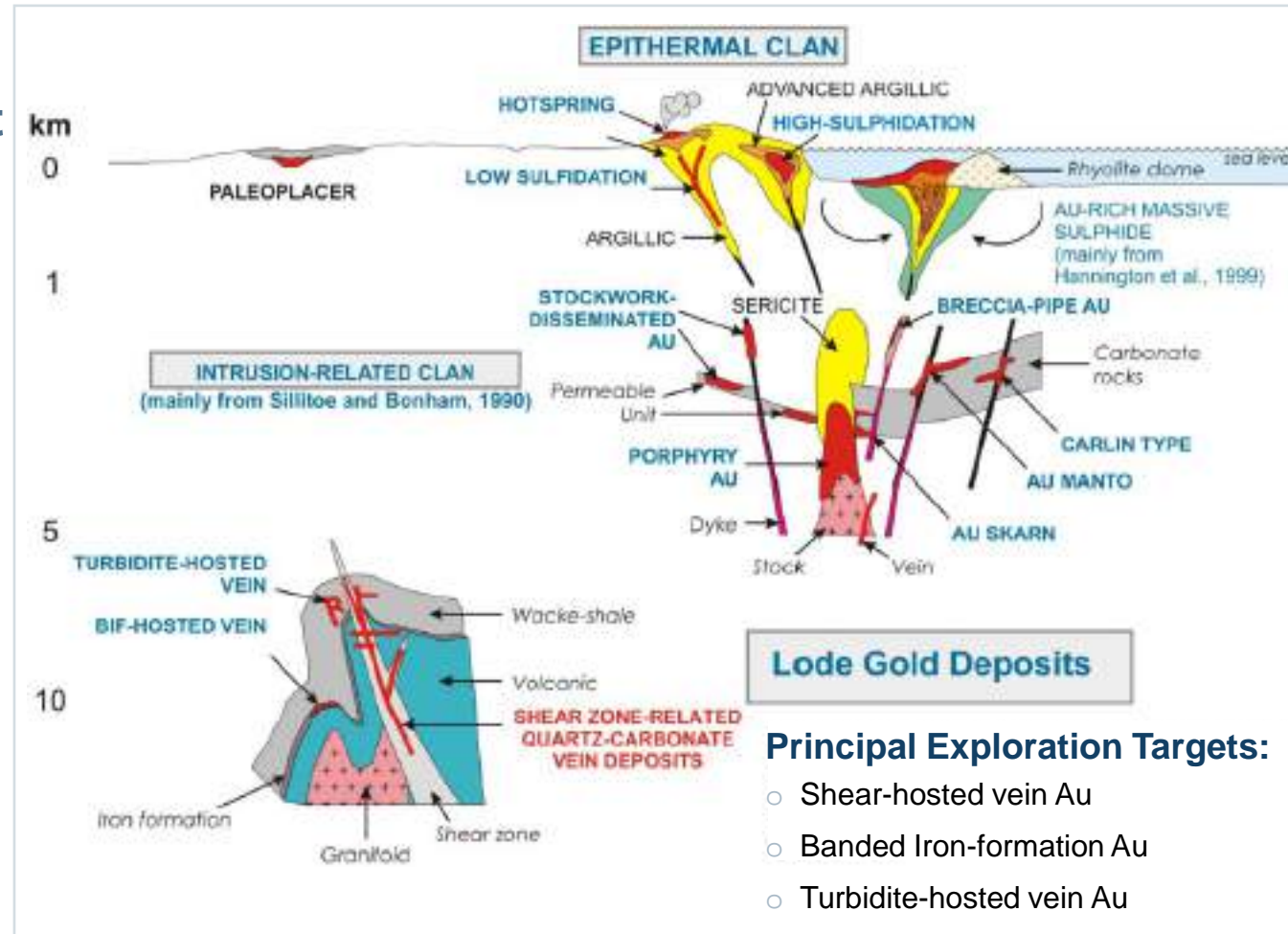
## Mineral Systems Concept (Source, Transport, Sink)

### Fluid Focusing:

- Splays of crustal-scale break
- Domains of low mean stress
- High differential stress

### Local-scale structural controls:

- Shear and hydraulic fracturing of competent rock-types
- Structural anisotropy
- Enhanced permeability
- Channeling of auriferous fluids
- Au precipitation (chemical/structural traps)



### Lode Gold Deposits

### Principal Exploration Targets:

- Shear-hosted vein Au
- Banded Iron-formation Au
- Turbidite-hosted vein Au





# Other Properties

## Focus on Tier-1 Mining Jurisdictions



	Manitoba	Ontario	
	Apex Project (100% owned)	Tully Project (100% owned)	Denton-Keefer Project (100% owned)
<b>HIGHLIGHTS</b>	<ul style="list-style-type: none"> <li>○ Historical resource* (140k tonnes @ 3.3 g/t Au)</li> <li>○ Reconnaissance exploration completed in Fall 2019</li> <li>○ Adjoins Laguna property under option to Kinross Gold</li> </ul>	<ul style="list-style-type: none"> <li>○ Stacked extension veins in mafic tuff unit</li> <li>○ Deposit open at depth and along strike</li> <li>○ Adjoins Bradshaw property (Gowest Gold)</li> </ul>	<ul style="list-style-type: none"> <li>○ Along projected trend of PDF</li> <li>○ Favourable geology and structure</li> <li>○ Several significant Au occurrences</li> </ul>
<b>LOCATION</b>	15km SE of Snow Lake, MB	30km N of Timmins, ON	35km SW of Timmins, ON
<b>PROPERTY AREA</b>	752 hectares	450 hectares	2,100 hectares
<b>TYPE OF DEPOSIT</b>	Orogenic / Intrusion Au	Orogenic lode gold	Orogenic lode gold
<b>GEOLOGICAL SETTING</b>	Flin Flon-Snow Lake belt	Abitibi belt	Abitibi belt
<b>PRINCIPAL STRUCTURE</b>	Crowduck Bay Fault	Pipestone Fault	Porcupine-Destor Fault
<b>PROXIMAL DEPOSITS</b>	New Britannia 1.5M oz. (past prod.)	Bradshaw	Timmins West

\* Non-NI 43-101 compliant