



OMG

Gold Discovery & Rapid Resource Growth In Guyana

TSX.V: **OMG**
OTCQB: **OMGGF**
EU: **ON2**



April 2023
Presentation

HIGHLIGHTS

Why Invest in Omai Gold?

3.6 MILLION OUNCE GOLD RESOURCE

- 2 significant gold deposits in < 2 yrs:
 - **1,907,600 ounces Au (Indicated)**
 - **1,777,600 ounces Au (Inferred)**
averaging 2.08 g/t
- 2023 focus on new exploration targets and continued resource expansion

LARGE PAST-PRODUCING GOLD MINE: 100% INTEREST

- Produced 3.8 million oz gold @ 1.45 g/t Au
- Was South America's largest primary gold producer >300k oz/yr
- Simple land tenure – 3 licences granted from government

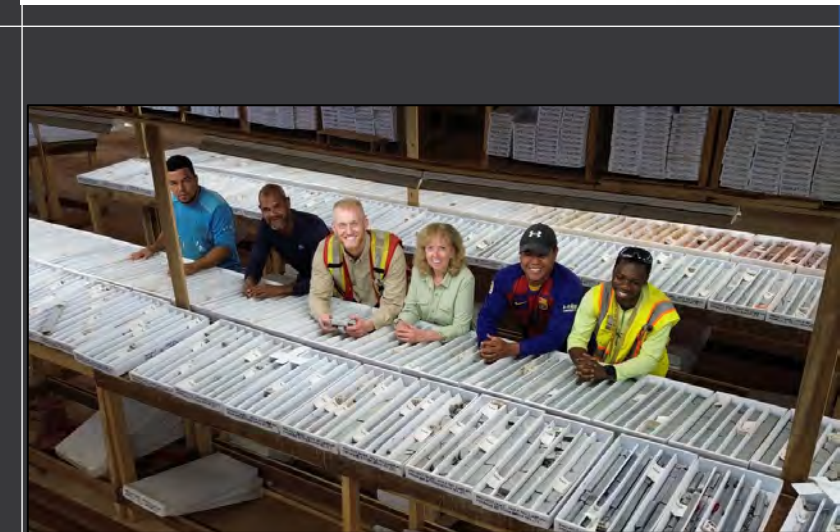
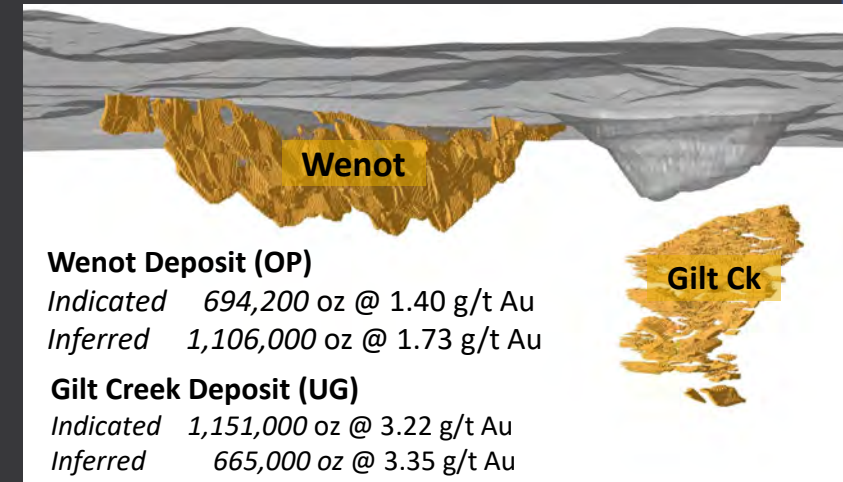


ADVANTAGES OF BROWNFIELDS PROJECT

- Known geology, proven to host economic gold deposits
- Known recoveries & metallurgy: 92% recovery with 32% from gravity circuit
- Massive historic database into modern GIS system accelerates discoveries
- Low discovery cost ~ \$2.50 / oz

CATALYSTS FOR RE-RATING

- Targeting 4 - 5 million oz (already 3.6 m oz)
- Trading at < \$6/oz
- Drilling quality targets for new deposits
- Focusing on resource expansion at Wenot, including near surface deposit for front end of mine plan



HIGHLIGHTS

Why Invest in Omai Gold?



SOLID INFRASTRUCTURE

- Road access from Georgetown (165km) -- being paved to within 10km
- Airstrip on property
- Large camp & core logging facility
- Hydropower project planned to within 35 km of Omai

GUYANA: A NEW HOT SPOT FOR MINING

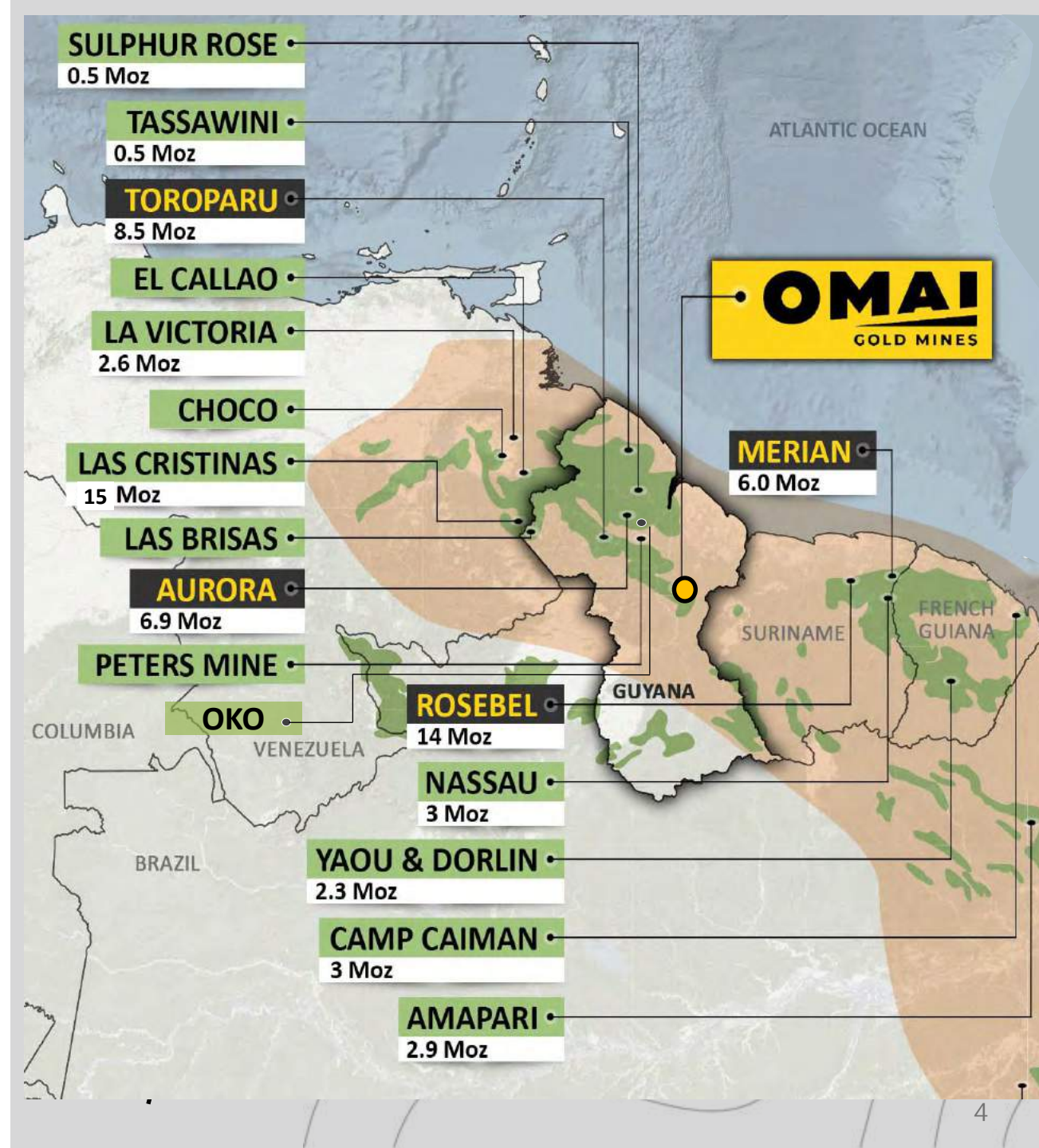
- Recognized gold-rich greenstone belt: attracted Barrick, GCM/Aris, Zijin
- Stable pro-mining jurisdiction, legacy of British law and business practices
- Government wants to see Omai re-open and create jobs

Guiana Shield

AN UNDEREXPLORED GREENSTONE BELT



- Exploration historically limited by dense rainforest, saprolite cover, minimal road access
- Orogenic gold deposits analogous to West Africa and Ontario/Quebec – large size with depth potential
- Guiana Shield greenstone belt hosts numerous multi-million ounce gold deposits
- Potential for world-class deposits & pro-mining government attracting attention of the majors: Barrick, Aris, Zijin, and others
- Interest in Guyana ignited by significant acquisitions but increasingly recognized as potential for new discoveries and more attractive as other jurisdictions become increasingly risky



Guyana



Government is Pro-Mine Development Mining Creates Jobs and brings Infrastructure to the Interior

- Long History of gold mining back to Spaniards and before:
 - gold, bauxite, diamonds, copper
- Small Population 790,000
- English speaking – Culturally connected to the Caribbean community; part of CARICOM
- Former British Guyana so British legal framework

STRONG GDP GROWTH – 2022 projection 54%:

- Offshore oil discovered in 2015, Exxon consortium
 - 340,000 bbls/day to 1.2 m bbl/day by 2027
 - 5 major new discoveries in 2022 – est 11 bn bbls
- Inflow of investments is accelerating infrastructure development which will further benefit mine development
- Job creation is a government priority – not happening as expected with offshore oil, so MINE DEVELOPMENT is still a major focus
- Omai Gold Mine employed over 1,000 when in production

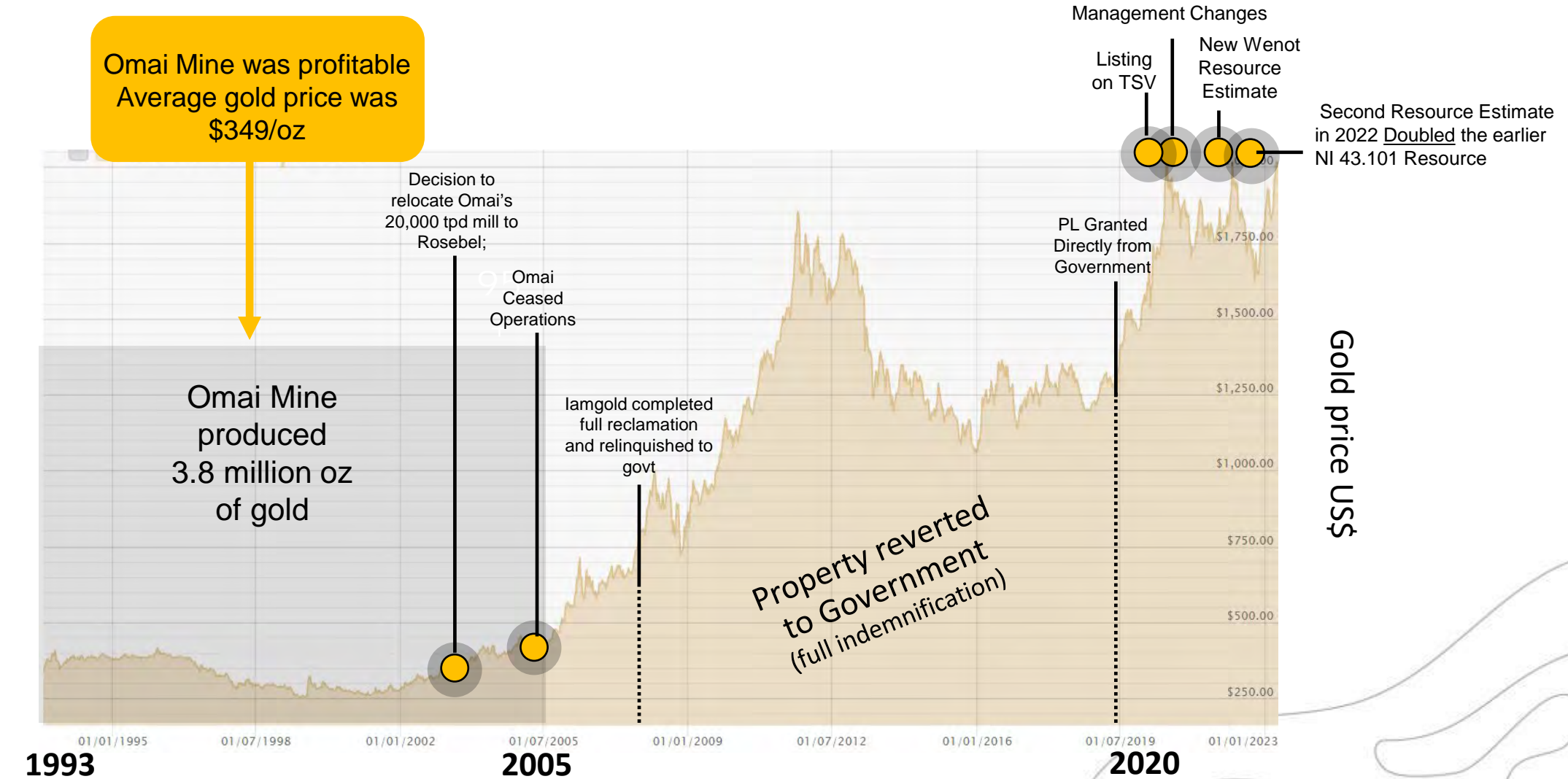
Venezuela
Guyana
Suriname
French Guiana

Brazil



Guyana's Honourable Vickram Bharrat,
MP, Minister of Natural Resources meets
with Omai Gold management

Gold Market Creates Opportunity for Past-Producers





Produced 3.8 m oz

New Resources¹ 3.7 m oz

ESTABLISHING A MAJOR GOLD MINING CAMP

Gilt Creek Deposit

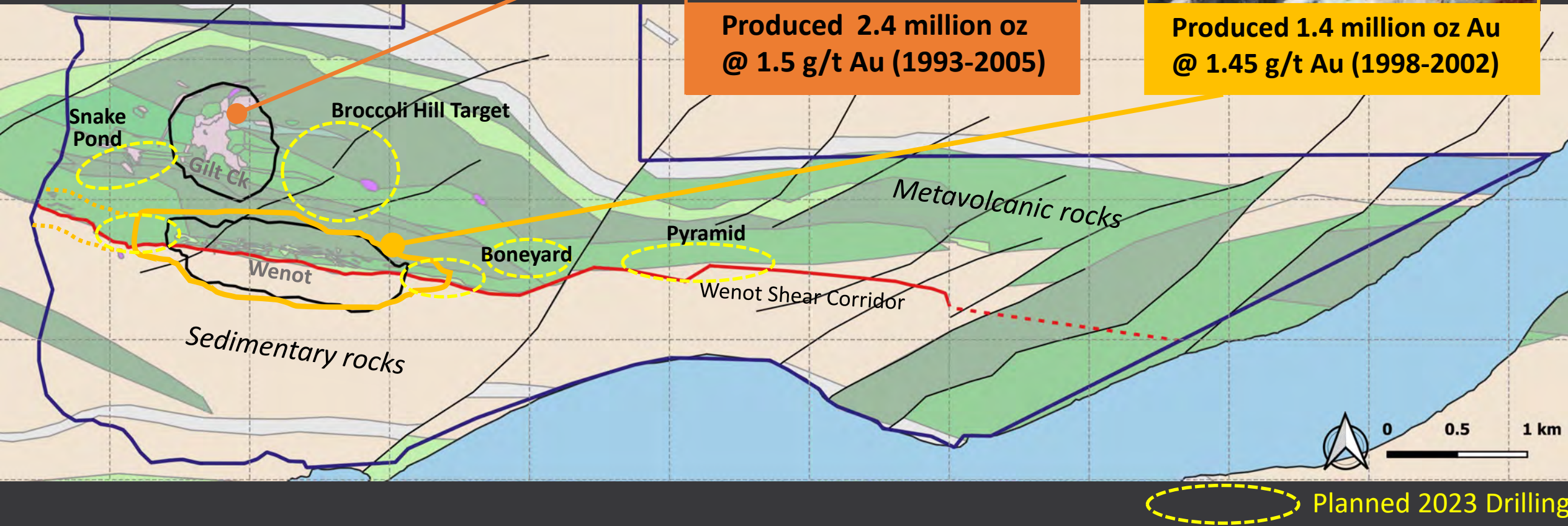


Produced 2.4 million oz
@ 1.5 g/t Au (1993-2005)

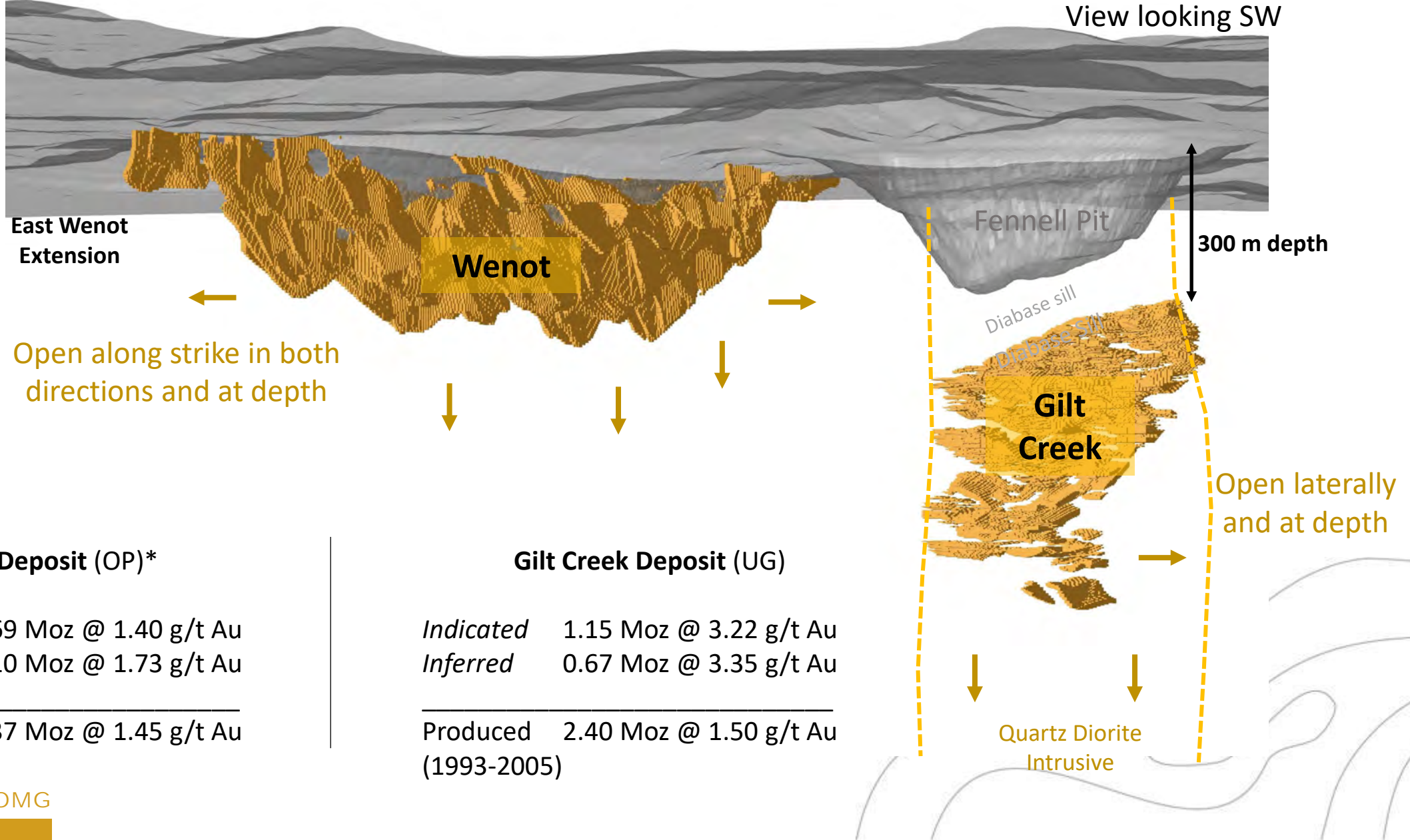
Wenot Deposit



Produced 1.4 million oz Au
@ 1.45 g/t Au (1998-2002)



Both Deposits with Significant Expansion Potential



Wenot Deposit (OP)*

Indicated 0.69 Moz @ 1.40 g/t Au
Inferred 1.10 Moz @ 1.73 g/t Au

Produced 1.37 Moz @ 1.45 g/t Au
 (1998-2002)

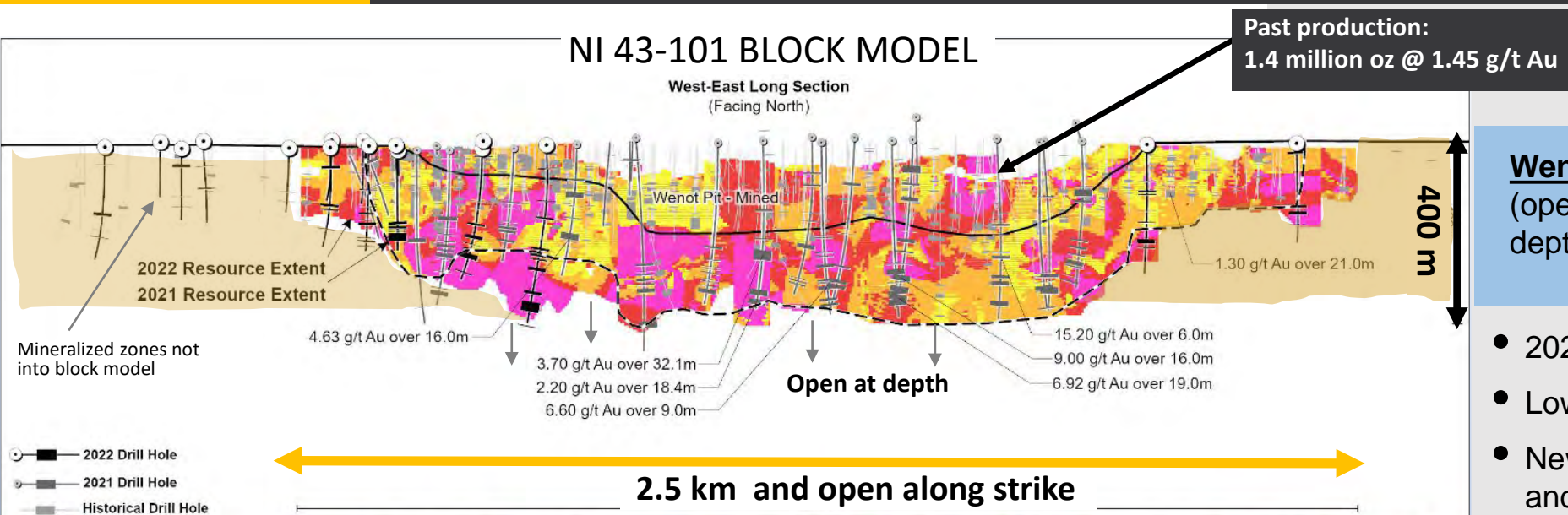
TSX.V: **OMG**

Gilt Creek Deposit (UG)

Indicated 1.15 Moz @ 3.22 g/t Au
Inferred 0.67 Moz @ 3.35 g/t Au

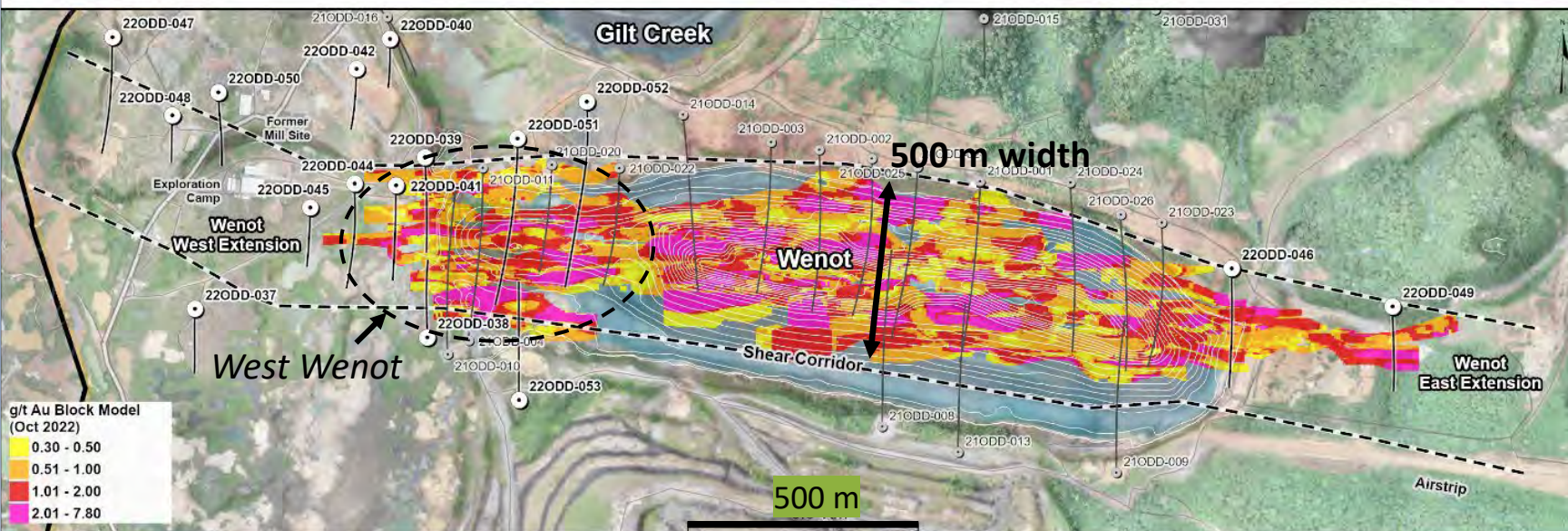
Produced 2.40 Moz @ 1.50 g/t Au
 (1993-2005)

Drilling Achieved Significant Resource Milestones



Wenot Target now at least 3.0 km strike
(open along strike) X 150 to 500 m wide X
depth of at least 425 metres

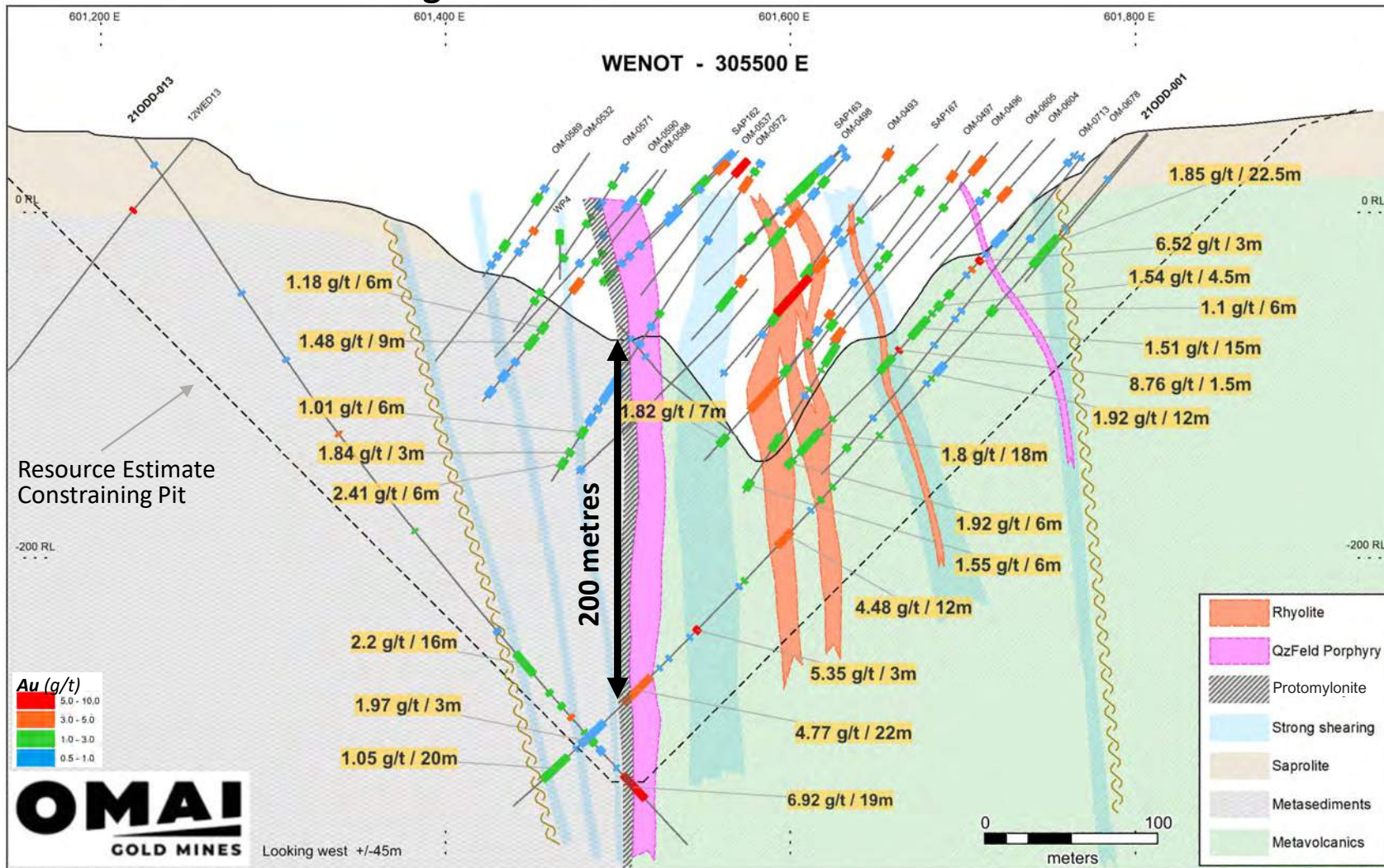
- 2021-2022 - completed 28 holes ~12,000m
- Low discovery cost \$2.50/oz
- New resource is along strike, on the flanks and below the past producing pit



Significant Grades & Widths:

- 9.0 g/t Au over 16.0 m
- 6.92 g/t over 19.0 m
- 3.7 g/t over 32.1 m
- 15.2 g/t over 6.0 m
- 2.27 g/t over 33.9 m
- 6.6 g/t over 9.0 m
- 4.63 g/t over 20.0 m

CROSS SECTION – Looking West



Wenot Shear-Hosted Deposit

- Multiple near-vertical gold-mineralized zones within broad 150 to 500 metre-wide regional Wenot Shear Corridor
- Gold mineralized shears identified along at least 3.0 km along strike and only mined along 1.5 km
- Mineralization extend to depths of over 425 and likely to continue to depth
- Proven continuity of grade and widths at depth consistent with past production
- Best intersections on this section include:
 - 6.92 g/t Au over 19 m
 - 4.77 g/t Au over 22 m
 - 1.85 g/t Au over 22.5 m (near surface)

Initial Resource Expanded by 14% in 10 months

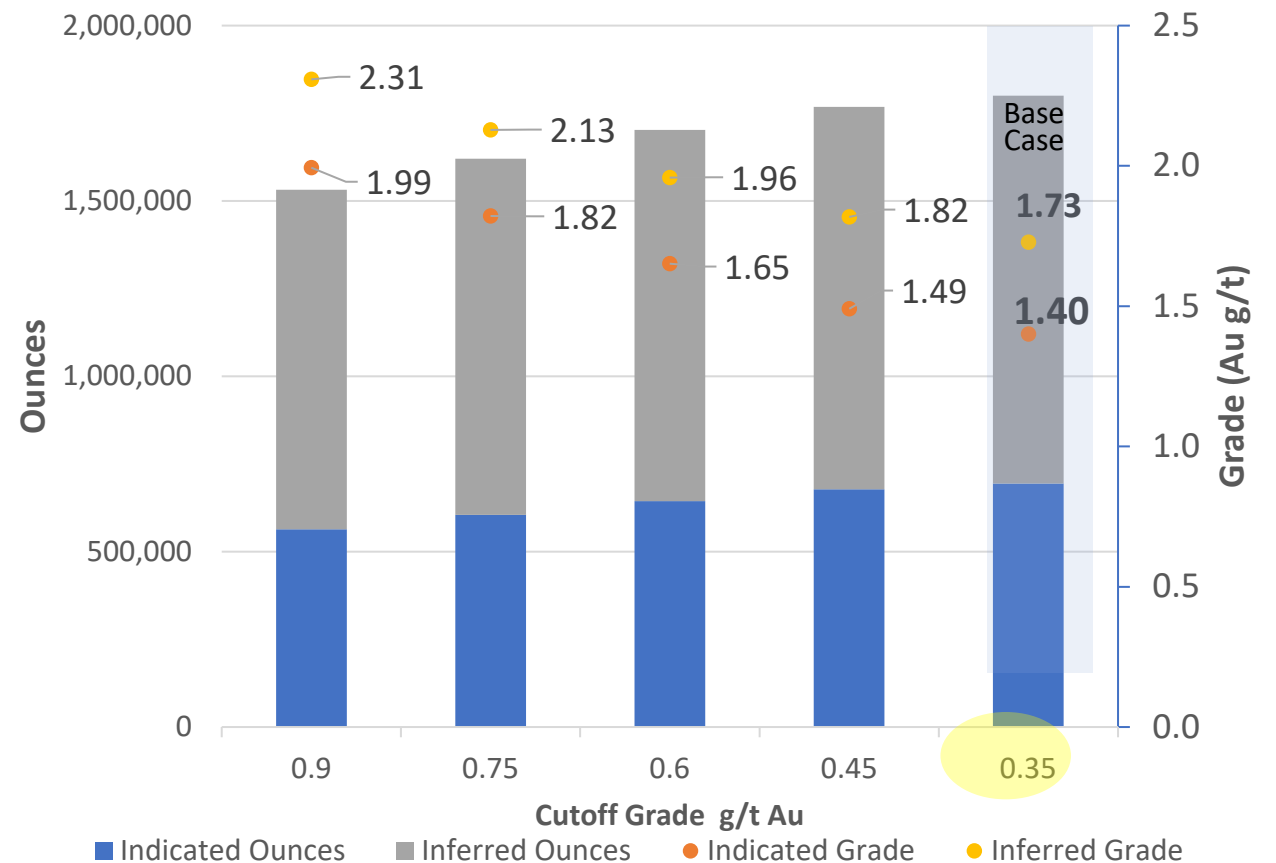
(Open Pit)	Million Tonnes	Gold Grade (gpt)	Contained Gold (ounces)
Indicated	15.4	1.40	694,200
Inferred	19.9	1.73	1,106,000

- Increased Resource ounces by 13.8% (in 10 mos)
- Constrained open pit with 11 gold zones or domains
- Integrated **10,647** assays from **579 drill holes**
- Resource model based on 0.35 g/t gold cut-off
- Increasing cut-off grade to 0.75 g/t Au
 - Does not significantly decrease the number of ounces (-10%)
 - Substantially increases the average grade to over 1.82 g/t Au (+30%)

Assumptions:

- Gold price: US\$1700/oz
- Pit slopes 45°
- 92% recoveries (actual historical)

SENSITIVITY TO CUT-OFF GRADE



Legend

Wenot Pit Depth Results Au g/t

10 m	0.35 - 1
100 m	1.01 - 3
>150 m	3.01 - 5
Drill Hole	5.01 - 10
	>10

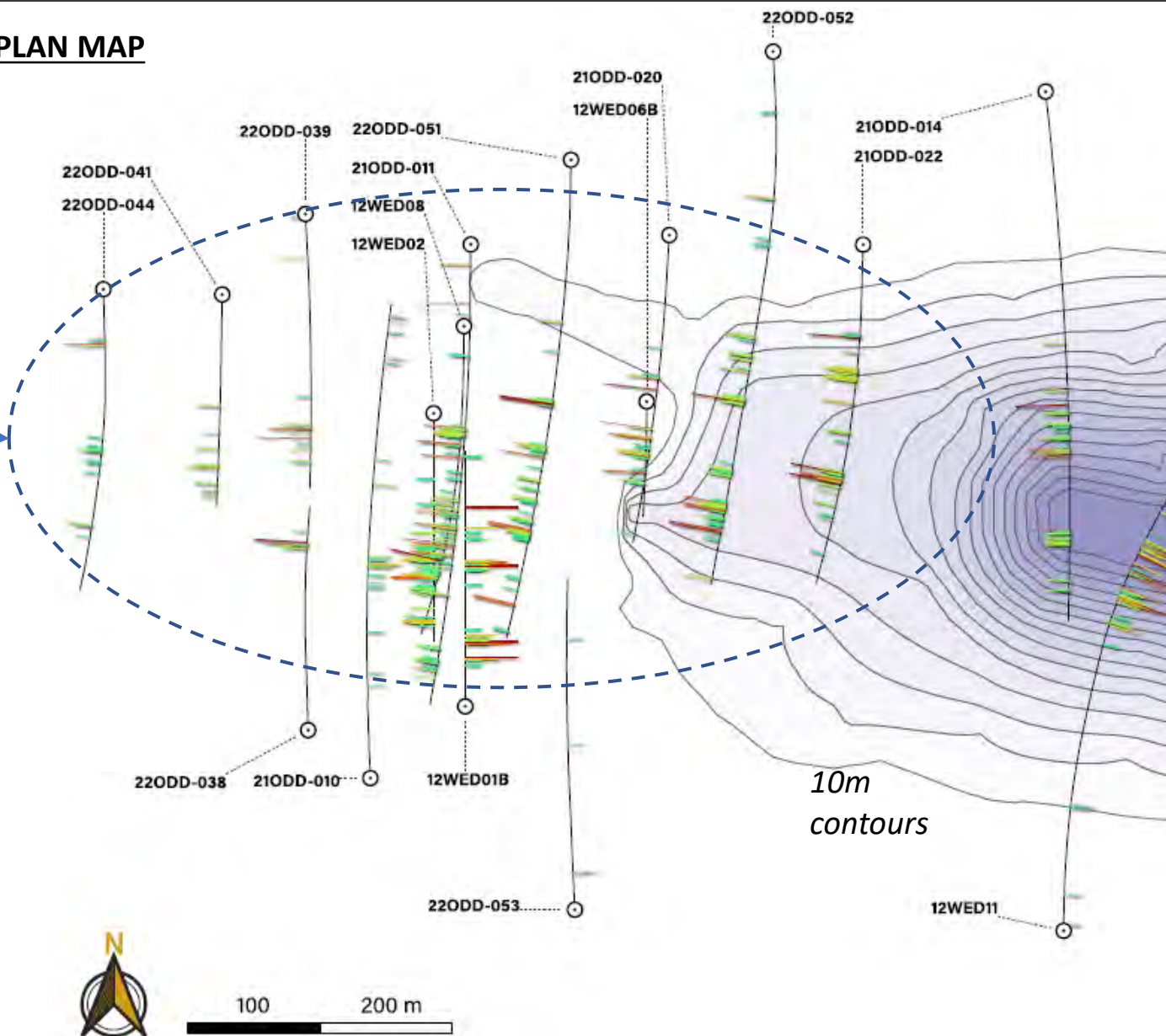
11.3 Mt @ 1.38 g/t

6.1 Mt @ 1.16 g/t Indicated and

5.2 Mt @ 1.65 g/t Inferred

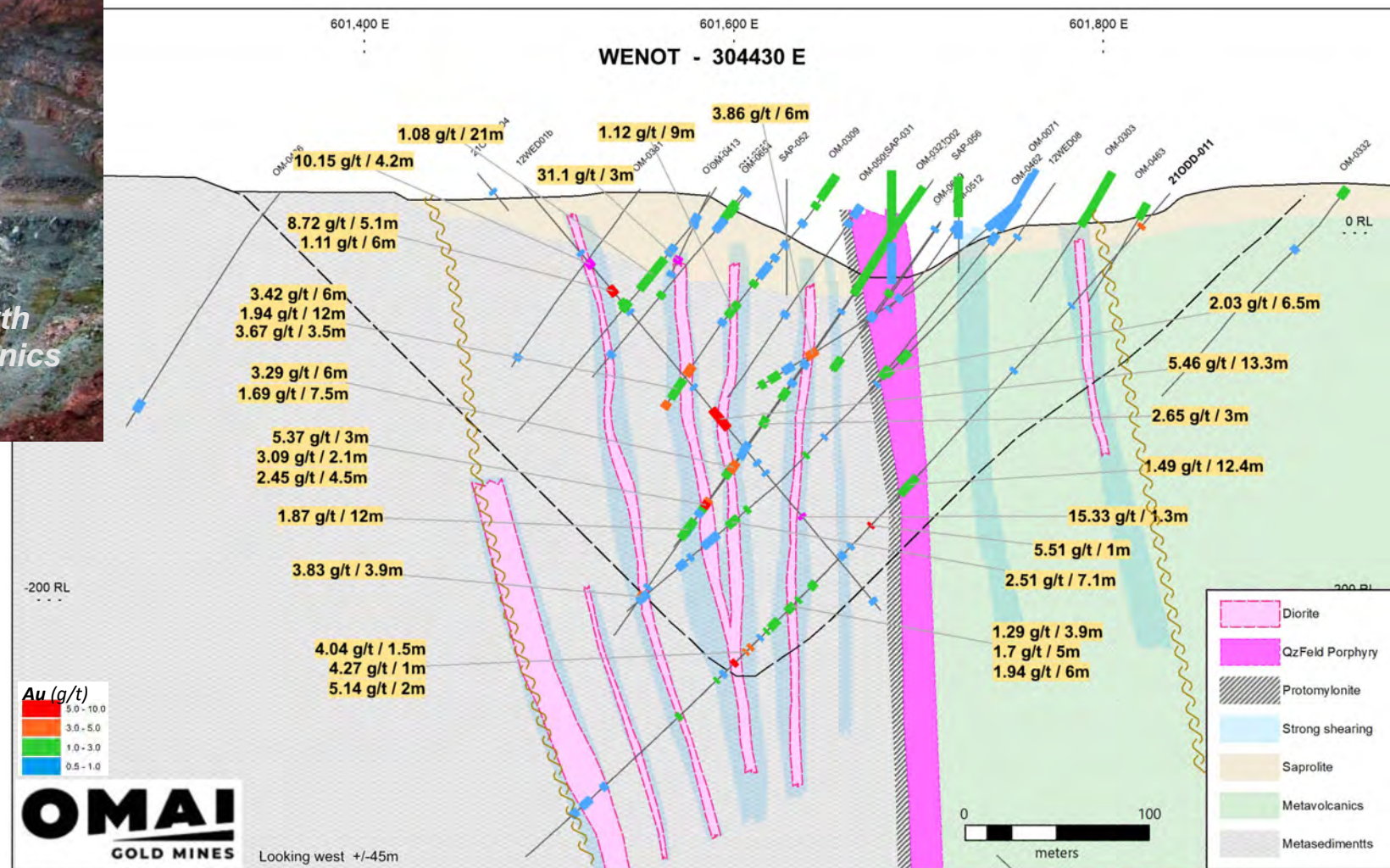
483,000 oz

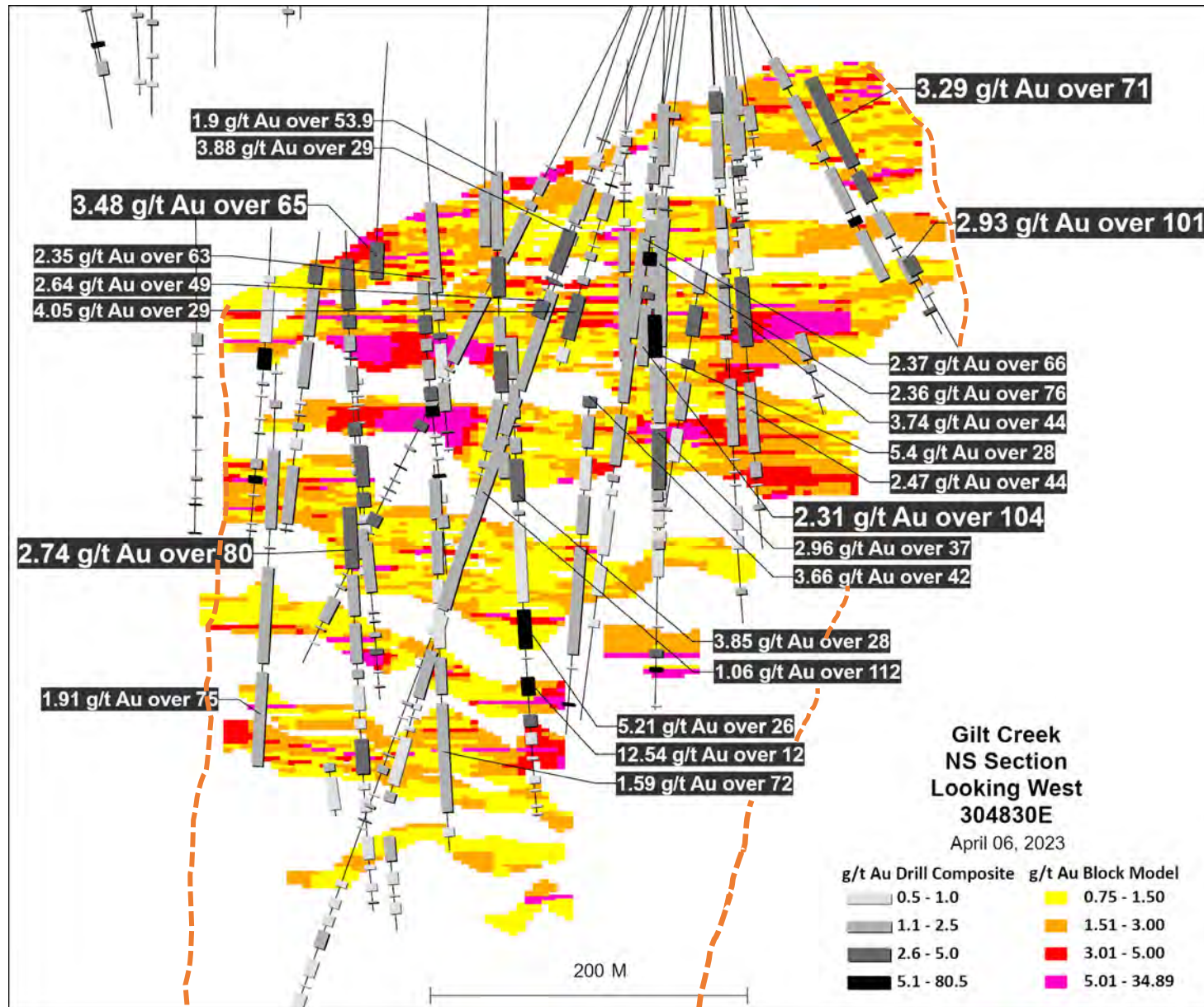
- Near surface / lower strip
- Minimum 600 m strike, open to west and at depth
- Additional drilling has high potential to expand this near surface resource

PLAN MAP



- Near surface mineralization target for early mining (front end of mine plan)
- Not explored due to infrastructure
- Mineralized shears more common in southern sediments at west end
- Historically, only surficial saprolite mined
- Multiple significant intersections from near surface to 275m depth, approx. 150 m width





- Ideal for large stope or bulk underground mining
- Compact dimensions for mining: 450 m by 275 m quartz diorite “Omai” intrusive stock
- Open at depth and laterally
- 46 holes drilled, 27,000 m (by lamgold 2006-7)
- Gold in an extensive quartz vein stockwork and disseminated
- Identified to 967 m depth with potential to 2km+
- Similar to smaller “Rory’s Knoll” mine (125 km NW) being developed to 2 km depth
- 41% of assays >0.5 gpt Au



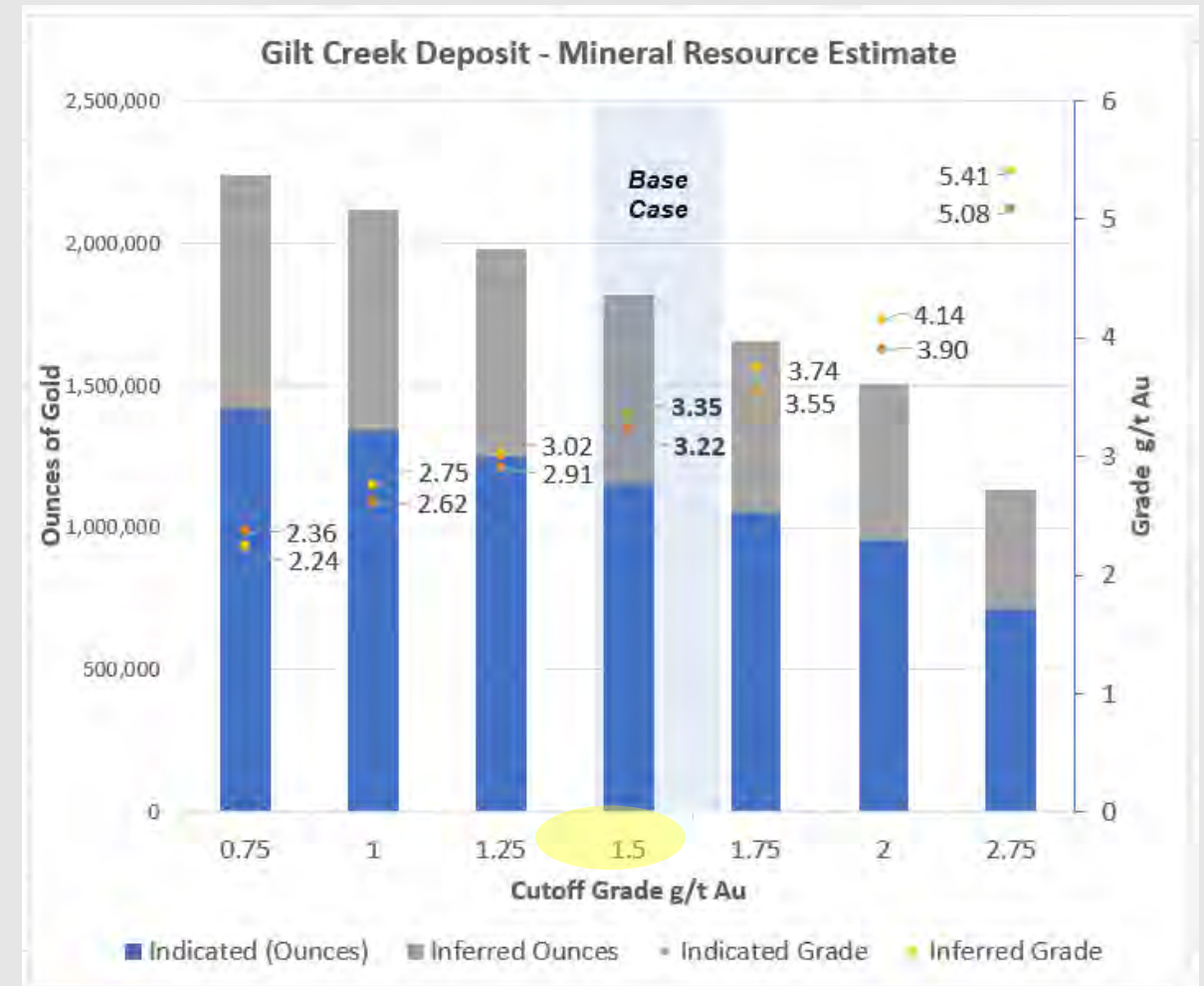
GILT CREEK RESOURCE (underground)

	Million Tonnes	Gold Grade (gpt)	Contained Gold (ounces)
Indicated	11.1	3.22	1,151,000
Inferred	6.2	3.35	665,000

- First NI 43-101 resource for Gilt Creek Deposit
- Integrated **7,056** assays from **46** drill holes totalling 27,997 m within the mineralized wireframes
- Resource model based on 1.5 g/t gold cut-off
- Increasing cut-off grade to 2.0 g/t Au
 - Decreases the number of ounces (-17%), still > 1.5 m oz.
 - Significantly increases the average grade to approx. 4 g/t Au (+20%)

Assumptions:

- Gold price: US\$1700/oz
- 92% recoveries (historical)



GAME CHANGERS

2023 Drill Program - Exploration Targets: Expanding the Omai Gold Camp

WEST OF GILT CREEK

1990s work never followed up:
Blueberry Hill:

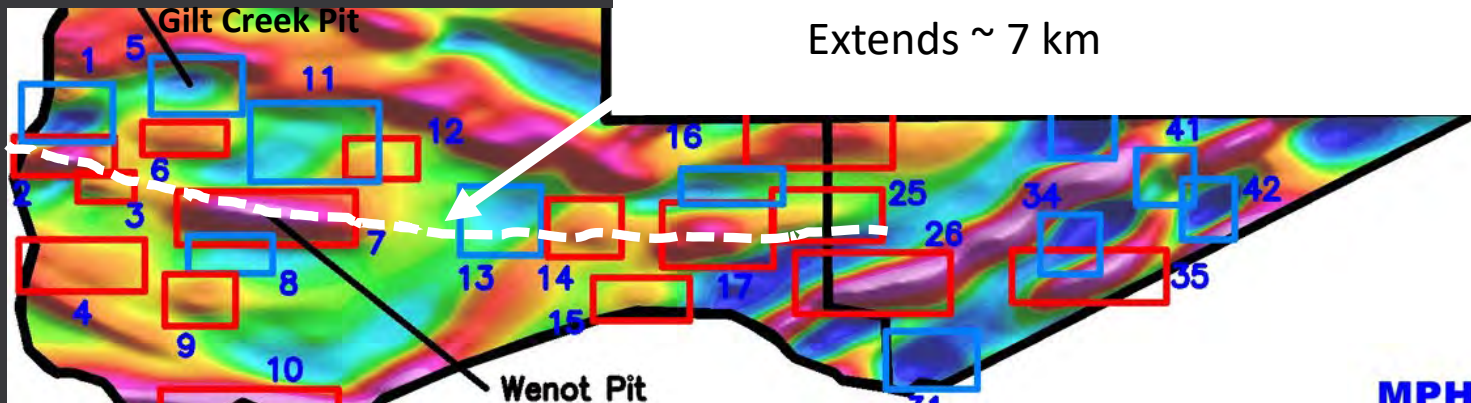
- Strong magnetic low
- Old drilling 9.0m 2.14 g/t & 72m @0.94 g/t Au
- Excellent trenching results

Snake Pond: 1990's drilling
16 m @ 6.9 g/t Au

GEOPHYSICS TARGETS

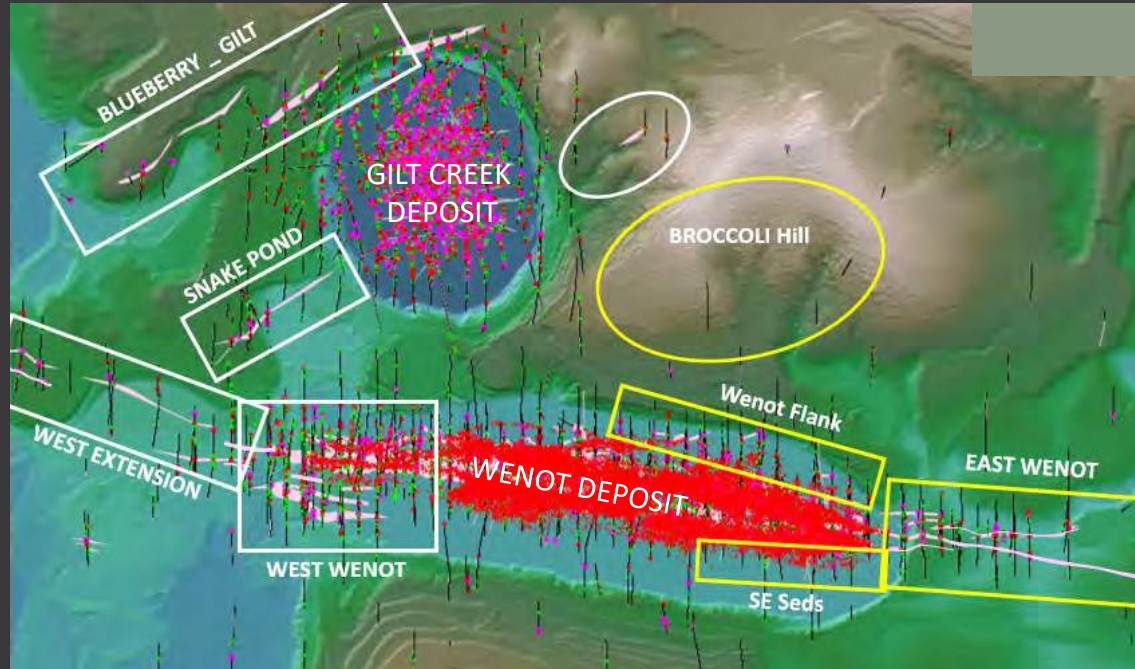
Aeromagnetic targets (2020 survey):

- 11 similar to Gilt Creek (mag lows)
- 14 similar to Wenot (mag highs)



Wenot Shear Corridor

Extends ~ 7 km



BROCCOLI HILL

- Large unexplored area, focus of artisanal miners for over 100 years
- Significant magnetic low very similar to Gilt Creek

WENOT EXTENSIONS

- Unmined near-surface gold mineralization both east and west
- Plan to drill select areas in 2023 to optimize further resource expansion



ARTISANAL WORKINGS

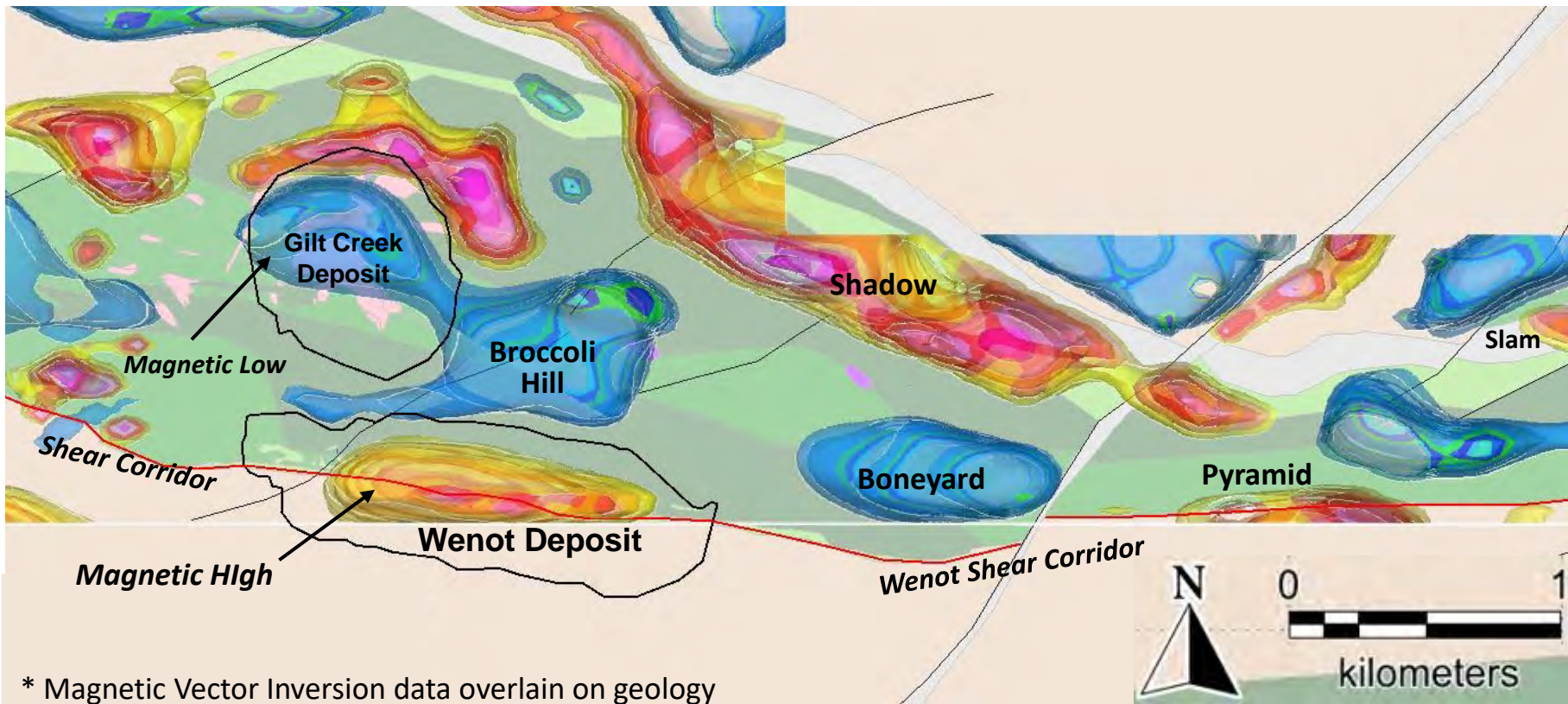
- Major Guiana Shield discoveries have been made testing under small scale surficial workings
- Omai has several such areas

Geophysics Effective in Refining Exploration Targets

- **Omai gold deposits exhibit distinctive magnetic signatures**
 - Gilt Creek deposit (intrusion-hosted) = *magnetic low*
 - Shear-hosted Wenot Deposit = *magnetic high*
- **3-D Magnetic Vector Inversions has been effective at refining and prioritizing our targets**

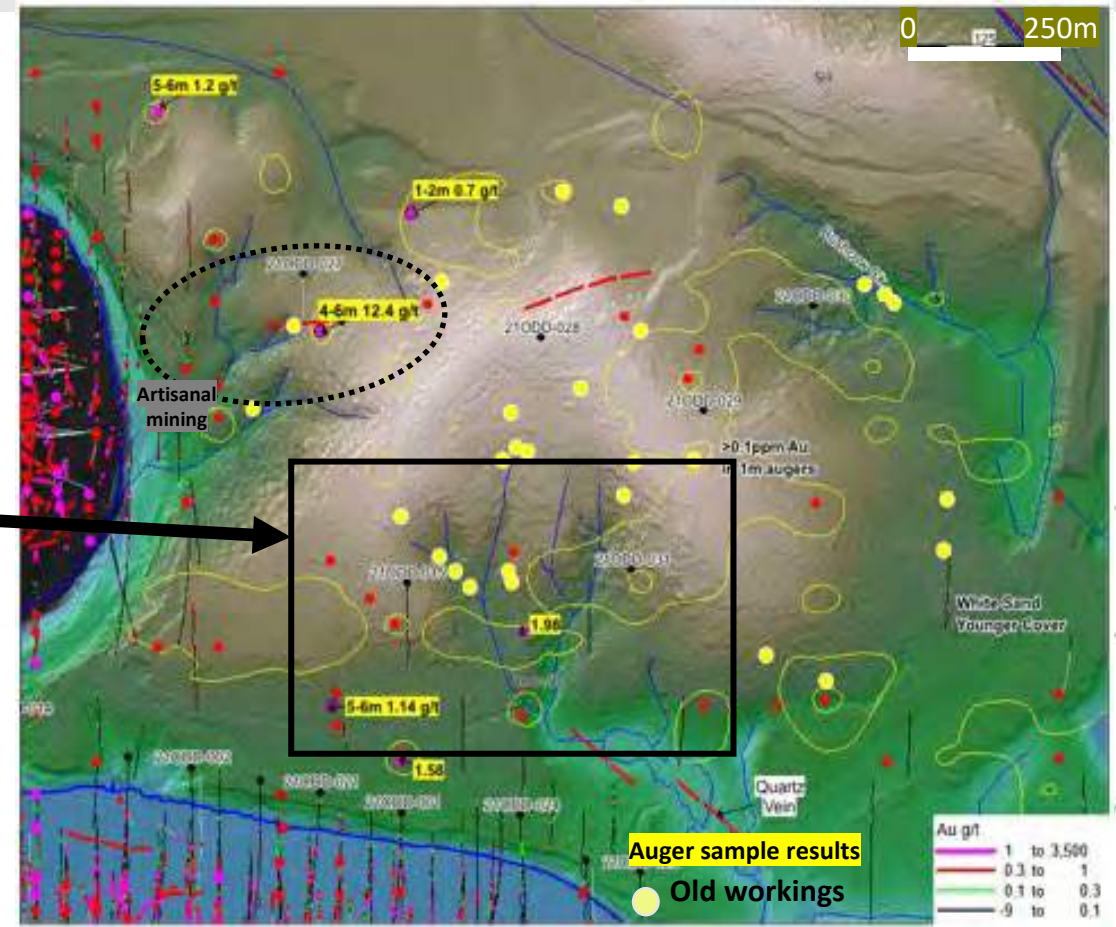
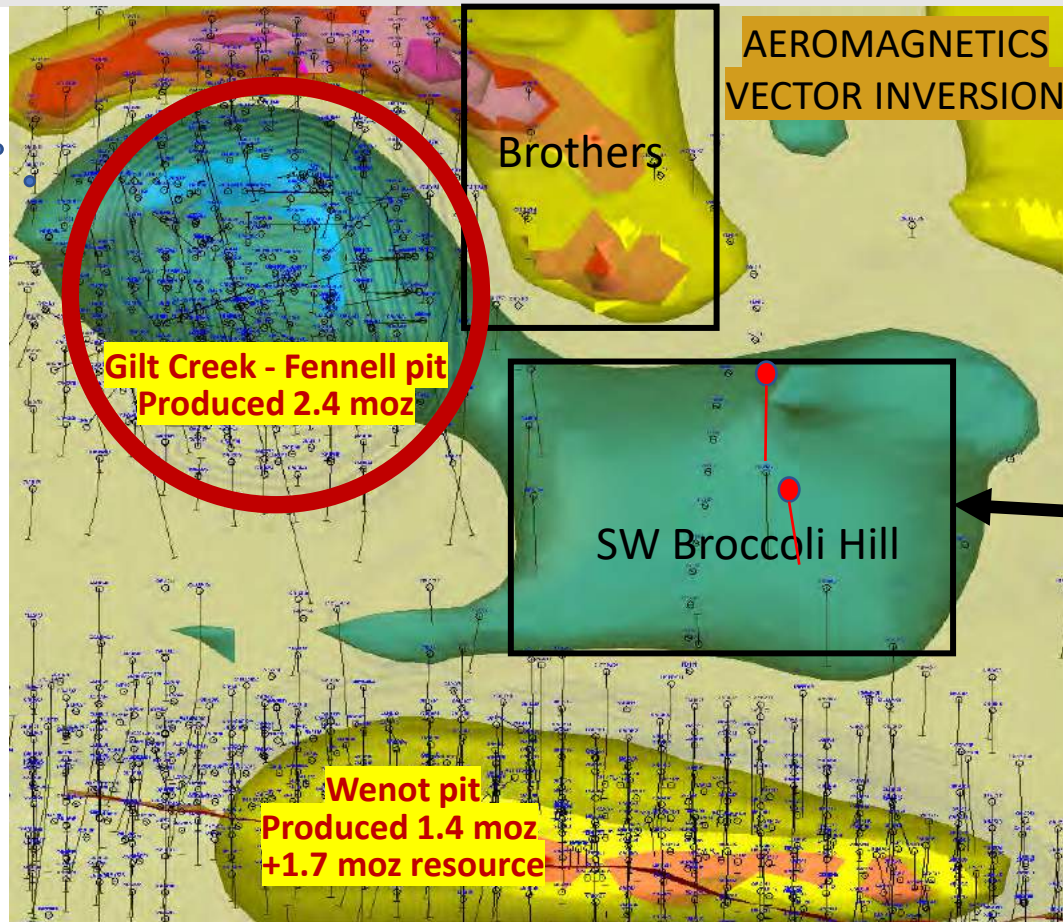
Drill Targets for H1 2023 – 5000 m drill program has commenced

- **Broccoli Hill** – a potential new Gilt Creek
- **Boneyard** – geophysics anomaly underlying area of intense historical artisanal mining; near the structurally active shear
- **Pyramid** – mag high directly over the projected Wenot Shear



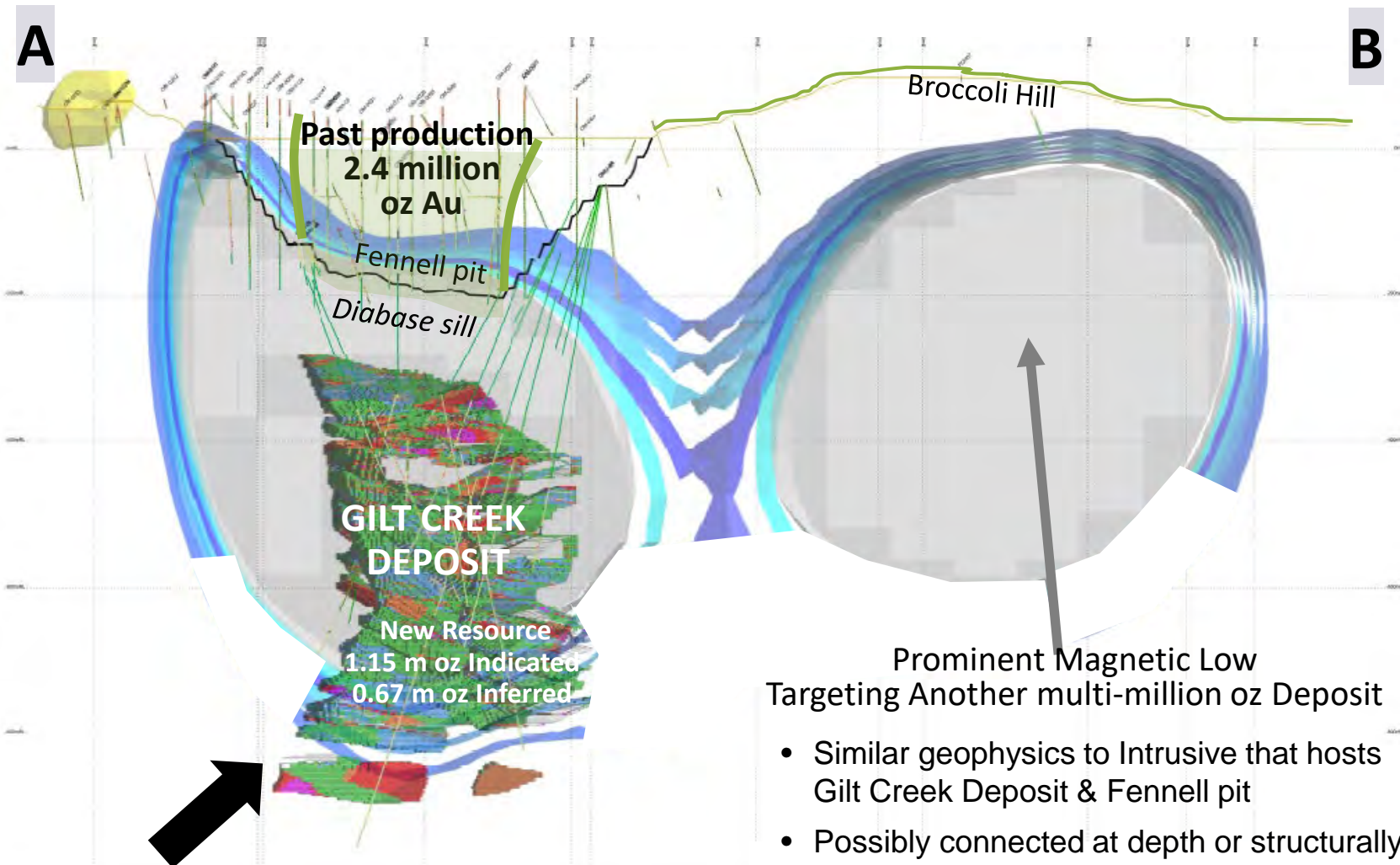
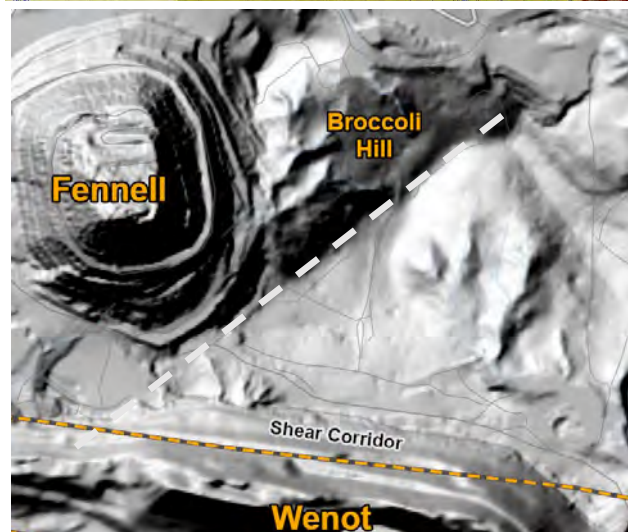
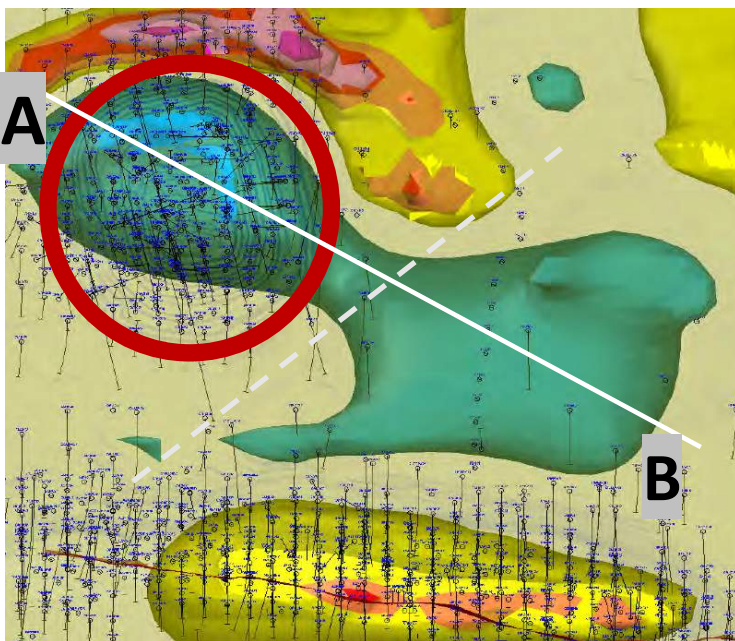
Broccoli Hill – Potential for Another Gilt Creek

- Significant saprolite and old mine workings back to the 1890s
- Broad gold-in-soil anomalies with auger samples of up to 12.4 g/t Au at 4 to 6 m depth
- Airborne magnetics highlights a magnetic low signature similar to Gilt Creek - another intrusion? Possible magmatic source indicated?
- Trenching exposed quartz-rich shear along 40 m with grabs of 29.0 g/t Au, 7.8 g/t, 5.0 g/t and 2.2 g/t
- 6 short scout holes (2021) totalling 690m, 4 intersected gold up to: 1.22 g/t over 3.9m, 0.91 g/t over 6.8 m, 2.4 g/t over 1.5m

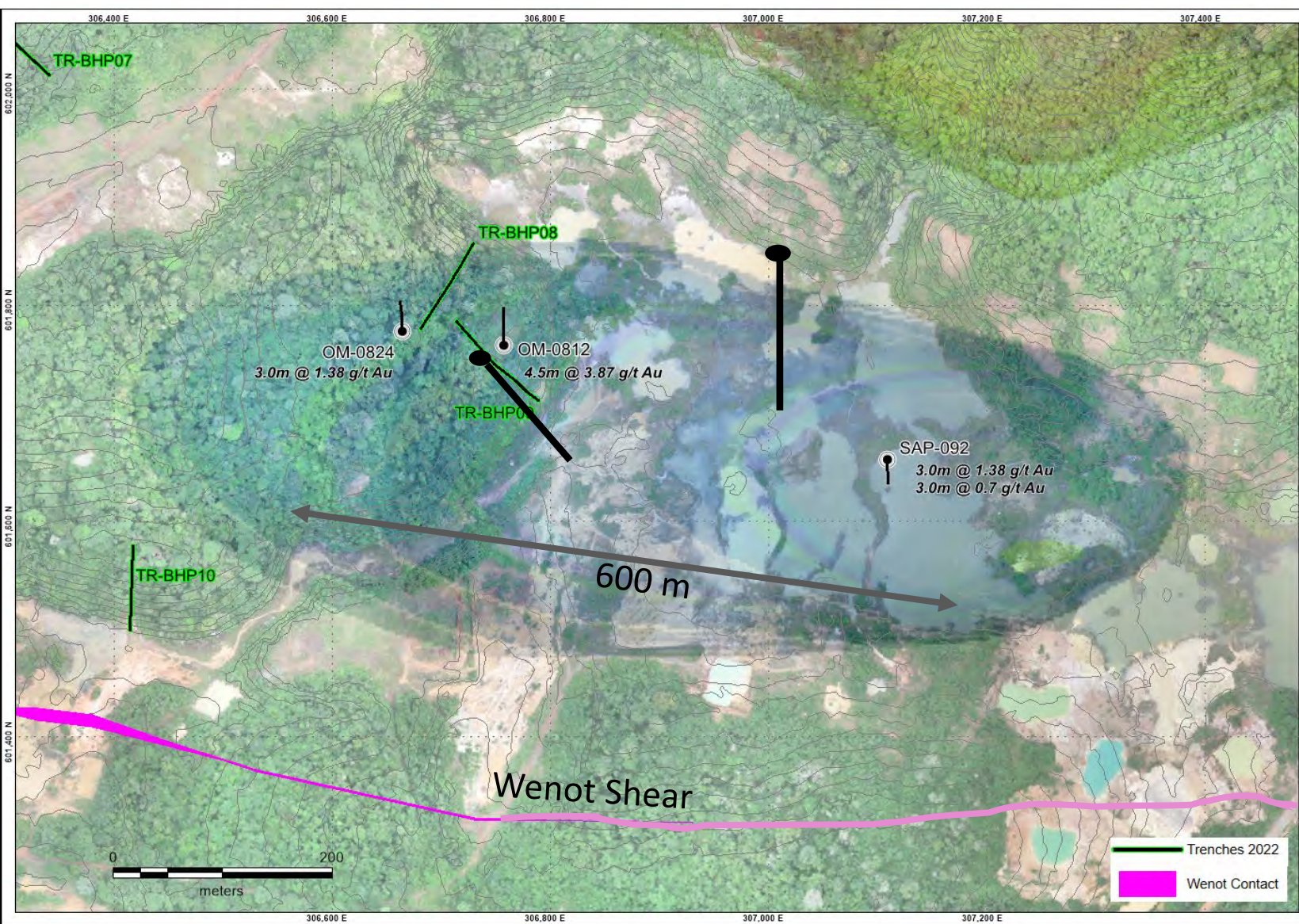


GAME CHANGERS

Targeting Another 4 million Ounce Deposit



Known: 2.4 m oz mined + 1.8 m oz New Resource¹
= 4.2 million ounce deposit (open at depth)



BONEYARD TARGET

- Magnetic low similar but larger than Gilt Creek (Possible Intrusion?)
- 600+ m long
- Extensive artisanal mining
- Near Wenot Shearing (structurally prepared ground)
- Historical values in shallow holes:

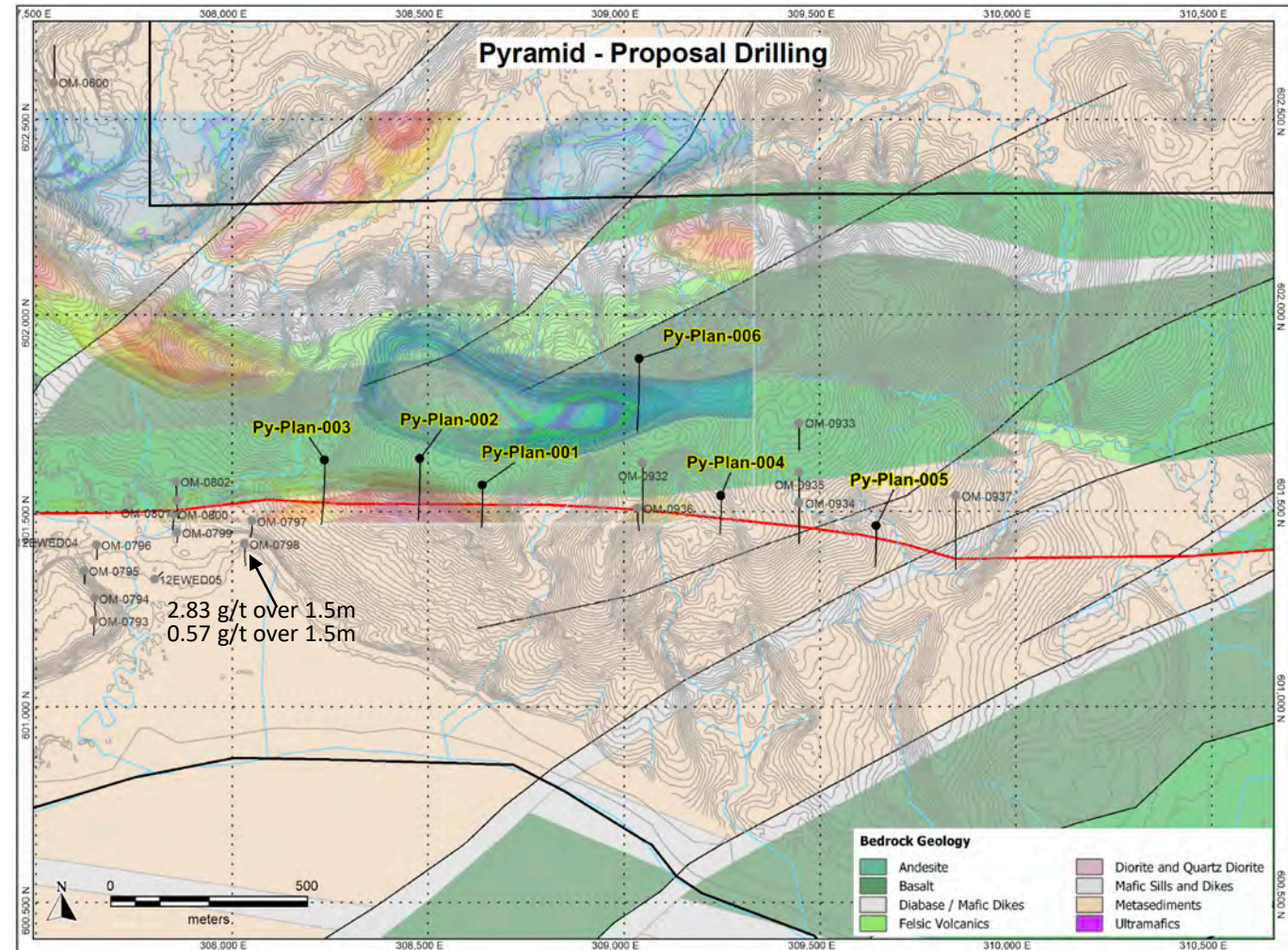
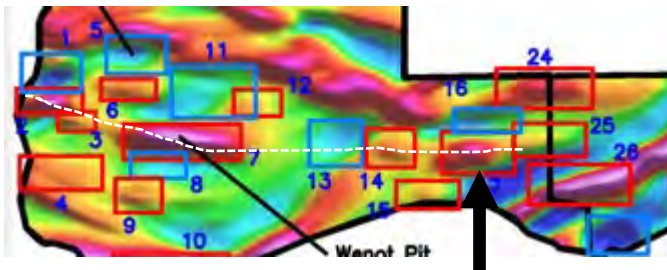
OM 824	3.0 m @ 1.38 g/t Au
OM 812	4.5 m @ 3.87 g/t
SAP 092	3.0 m @ 1.38 g/t
	3.0 m @ 0.7 g/t

- Initial 2 holes planned for 760 m testing the magnetic low
- Additional proposed hole to test closer to the Wenot Shear



Pyramid Target Area

- Magnetic high, most similar anomaly to the Wenot
- Located directly over the Wenot Shear extension
- Few historic holes confirm the shear contact with wide intersections of quartz feldspar porphyry
- Target has a 1 km strike high magnetic signature along the Wenot shear - never drilled
- Flanking magnetic low to the north identified as possible intrusive body
- Coarse angular gold panned from creeks flowing to the north suggest potential source near the magnetic low flanking Pyramid
- Five to six holes planned totalling 1200-1500 m





OMAI GOLD STRATEGY

The path to building a world-class Gold Camp:

CONTINUE EXPANDING WENOT RESOURCE

- Maiden resource Jan/22
- 13% Expansion Oct/22

- Geochemical survey launched along 4-5 km shear extension
- 2023 further selective drilling to optimize expansion of resource

ASSESS GILT CREEK EXPANSION

- Substantial NI 43-101 resource for Gilt Creek Oct 2022

- Modelling mineralized structures to determine drill program for lateral and down-dip expansion
- Consider economic studies

DRILL HIGH POTENTIAL EXPLORATION TARGETS

- Broccoli Hill – Potential for another Gilt Creek Deposit
- Significant gold values at Snake Pond, Blueberry Hill
- Areas of intense historical artisanal mining
- H1 2023 - 5000 m diamond drilling: Broccoli Hill, Boneyard, Pyramid underway

+

+

**Resource Building & Exploration
Will Drive the Mine Plan over the next 12-18 months**

THE TEAM

Directors & Management

- DON DUDEK**

P.Geo.
Non-Executive Chairman
- ELAINE ELLINGHAM**

P.Geo, MBA, M.Sc
President & CEO, Director
- JOHN JENTZ**

HBSc (Actuarial). MBA, CA, CP
- NADINE MILLER**

MBA, PEng
- LON SHAVER**

CFA

Advisory Committee

RENAUD ADAMS P.Eng



Share Capital & Financial Position

Cash Position (Mar 31/23)	C\$ 3.0 million
Common Shares Issued & O/S	377.8 million
Warrants	55.2 million
Stock Options	35.5 million
Share Price	\$ 0.07
Market Capitalization	\$ 26.4 million



TSX.V: **OMG**
OTCQB: **OMGGF**

Shareholders

Institutions (Mackenzie, Ruffer, US Global, EDE..)	18%
Silvercorp	9.1%
Sandstorm Gold Royalties	5.3%
Management	3.0%



Focused on
Results

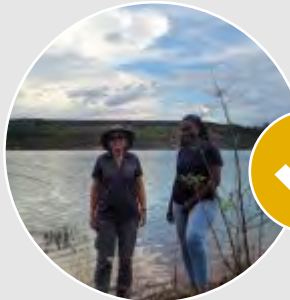
Key Elements For Success



**Team In-place with
Expertise & Track
Record**



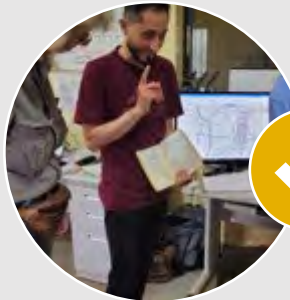
**Government
Enthusiastic for
Project Advancement**



**Two Drills on Site,
Two Accredited
Local Assay Labs**



**Road Access, Year-
Round Work and
Cleared Site**



**Wealth of Untapped
Historical Data &
Hands-on
Knowledge**



**Rapidly Building
Resources & Large
Blue Sky Targets**



OMG

CONTACT

ELAINE ELLINGHAM
CEO

info@omaigoldmines.com

elaine@omaigoldmines.com

TSX.V: **OMG** OTC: **OMGGF**

TSX.V: **OMG**