

BUILDING ON A NEW GOLD DISCOVERY



WILLIAMS BROOK GOLD PROJECT
New Brunswick, Atlantic Canada

September 2022

TSXV : PUMA
OTCQB : PUMXF











This presentation may contain forward-looking statements such as use of words or phrases such as: is poised to, historical resource estimates, to be appointed, to create, up to, expected to cost, yet to be defined, etc. Such forward-looking statements involve a number of known and unknown risks, uncertainties and other factors which may cause the actual results, performance or achievements of Puma Exploration Inc. to be materially different from actual future results and achievements expressed or implied by such forward-looking statements.

Readers are cautioned not to place undue reliance on these forward-looking statements which speak only as of the date the statements were made, except as required by law. Puma Exploration Inc. undertakes no responsibility to publicly update or revise any forward-looking statements. These risks and uncertainties include that actual results obtained by Puma in the future may differ materially from the historical results alluded to in this presentation by others, which historical results have not been fully verified by Puma. In addition, readers of this presentation should review the risks and uncertainties that are described in the quarterly and annual reports and in the documents submitted to the securities administration. Neither the Toronto Venture Exchange nor its Regulation Services Provider (as that term is defined in the policies of the TSX Venture Exchange) accepts responsibility for the adequacy or accuracy of this presentation.

Qualified Person

Unless stated otherwise herein, all scientific and technical data contained in this presentation has been reviewed, approved and verified by Dominique Gagné, P.Geo, a qualified person as defined by Canadian National Instrument 43-101 standards.

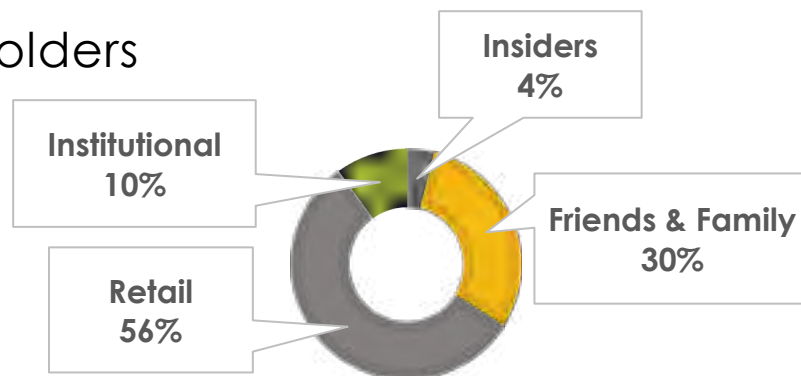


-  **Excellent Access** - paved road, airport, rail and seaport
-  **Aggressive 2022 Exploration Program** - >10,000 m drilling
-  **Underexplored Gold Land Package** - > 40,000 ha
-  **Strong Financial Position** - \$2.5 M cash in treasury
-  **Major Gold Discovery in 2021**- 5.55 g/t Au over 50.15 m
-  **Mining Infrastructure Nearby** - famous Bathurst Mining Camp
-  **Blue Sky Drill-Ready Targets** - km-long gold trends
-  **Proven Management** - experienced and diversified team



Shares outstanding	118,970,321
Options (wt. av. \$0.31)	8,150,000
Warrants (wt. av. \$0.32)	23,611,242
Fully diluted	150,731,563
Cash in treasury	C\$2.5M

Holder



Marcel Robillard, P.Geo.

President & CEO

>25 years experience in junior exploration. Past President of Geominex, a geology consulting firm. Has led Puma since 2009.

Dominique Gagné, P.Geo

Senior Exploration Geologist

>17 years experience on grassroots to advanced exploration projects in Eastern Canada. Puma's technical team lead since 2013.

Dr. Laura Araneda

Director

New-Brunswick business leader with > 20 years experience in the mining sector. CEO of HIT Drilling.

Jacques Dion

Director

>30 years of experience in environmental assessment and waste management. Extensive experience partnering with First Nations communities.

Michel Fontaine

Director

Entrepreneur with > 20 years working in the mining sector. Founder of Windfall Geotek (TSXV: WIN).

Réjean Gosselin

Director and Executive Chairman

Seasoned mining executive with >42 years experience leading junior exploration companies.

Richard Thibault, P.Eng.

Director

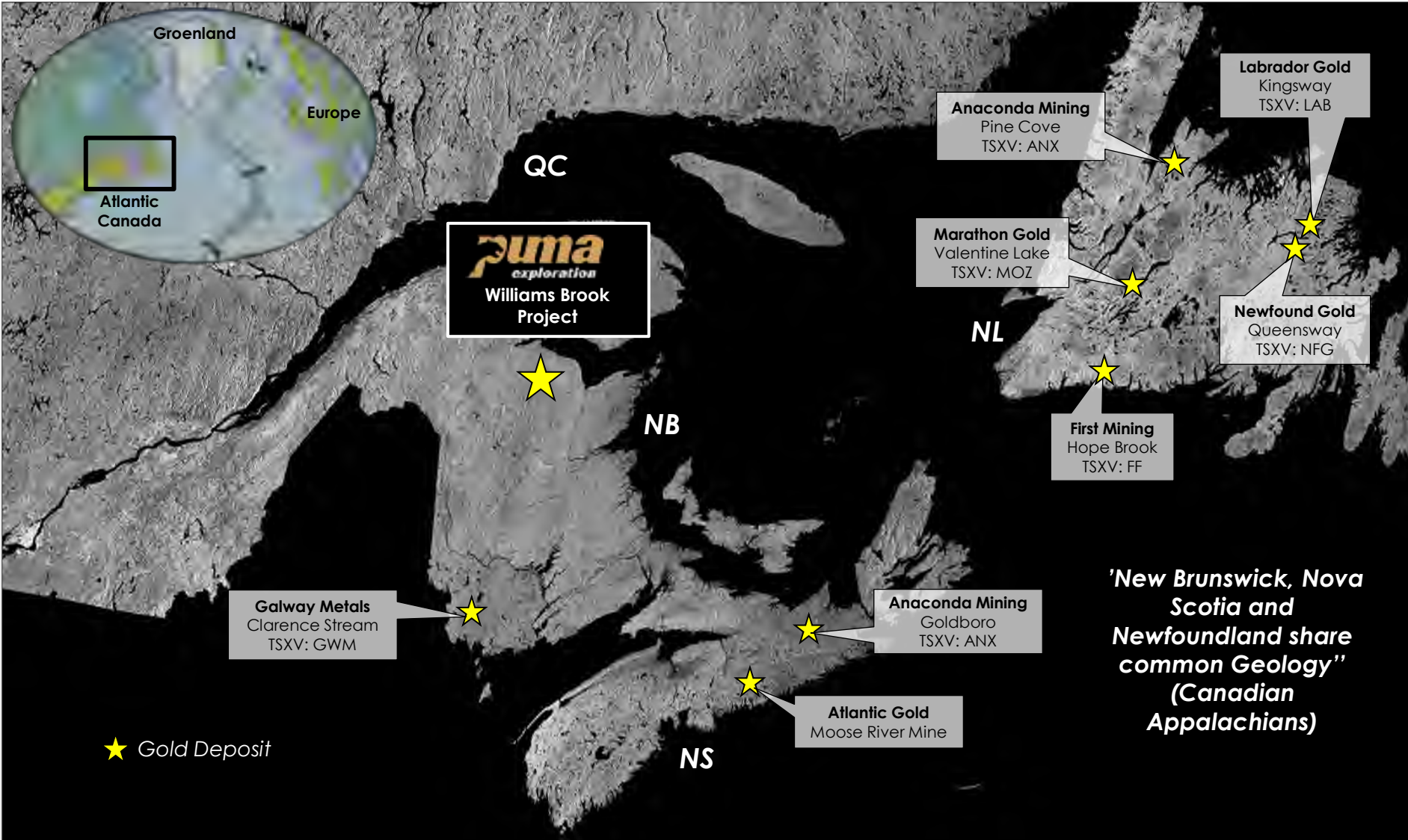
>42 years experience in mining engineering, operations, management and consulting in North & South America and Southeast Asia.

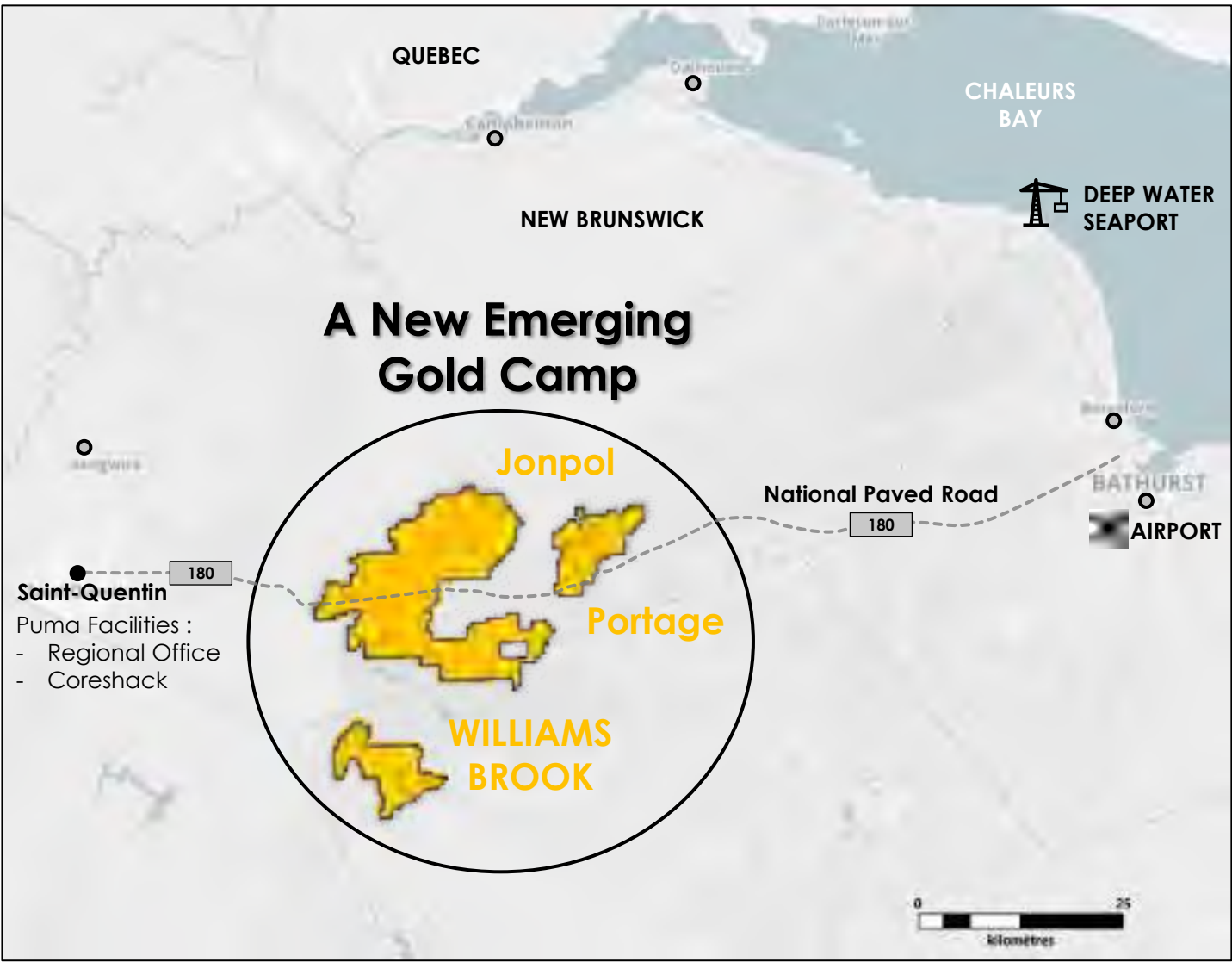


**“FOCUSED ON GOLD
EXPLORATION”**

**in New Brunswick, Atlantic
Canada**

Au | ATLANTIC CANADA – HOT BED OF GOLD PROJECTS





- > 40,000 ha close to renouv Bathurst Mining Camp
- Prime jurisdiction with excellent infrastructure in place (roads, airport, rail)
- Mining infrastructure already in place with full seaport access
- Mining-friendly jurisdiction
- Availability of local skilled workforce.
- Regional Natural Resource (DNR) office
- Established mining school to help grow the labour force



Au | TIMELINE OF LYNX GOLD DISCOVERY



September 2019 : Property Visit



July 2020 : First trench at O'Neil

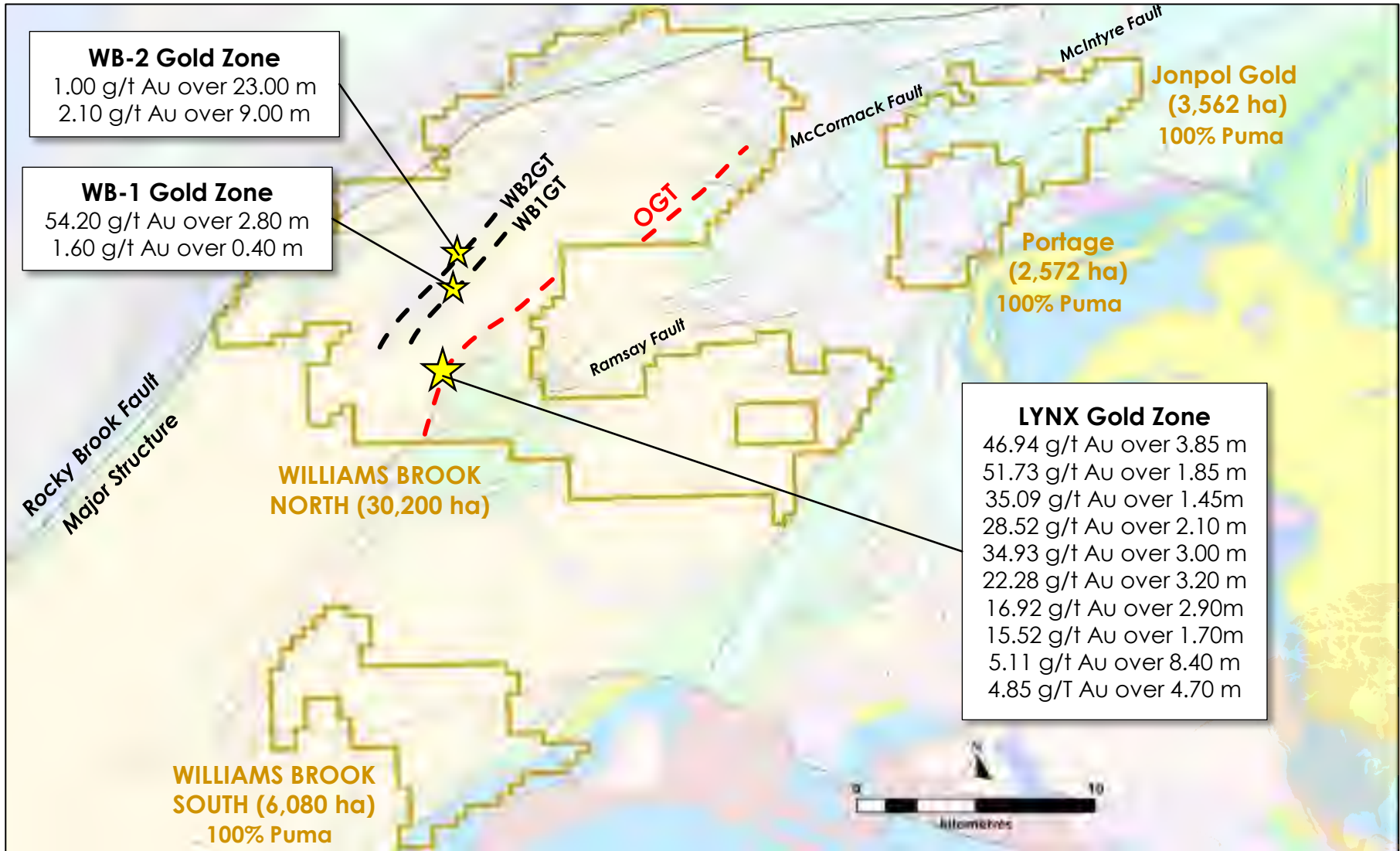


May 2021 : Stripping at Lynx



August 2021 : Initial Drilling with Discovery

Au | EMERGING GOLD CAMP – TRIPLE FAULT AREA

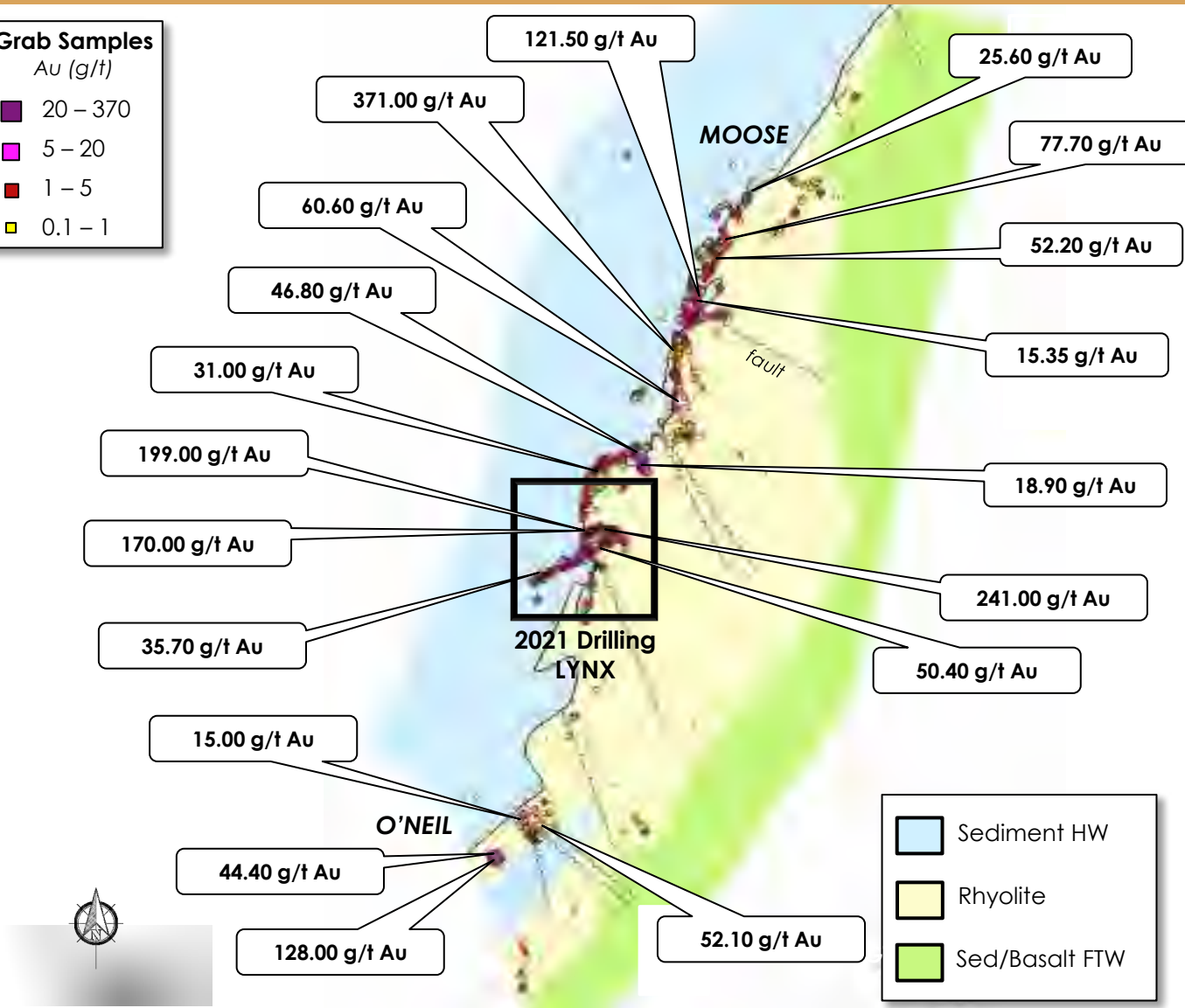


Au | SURFACE SAMPLING AT O'NEIL GOLD TREND (750 m)



Grab Samples
Au (g/t)

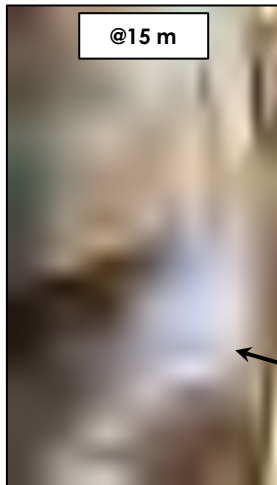
- 20 – 370
- 5 – 20
- 1 – 5
- 0.1 – 1



Au | SIMILARITIES GRAB SAMPLES & CORE SAMPLES

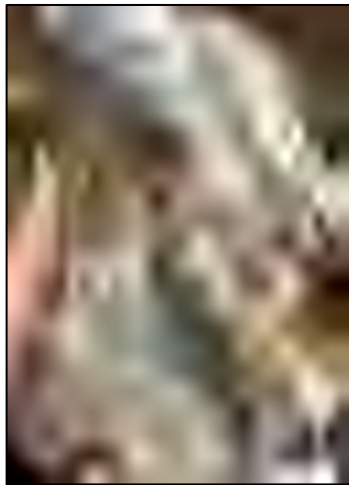


241.00 g/t Au

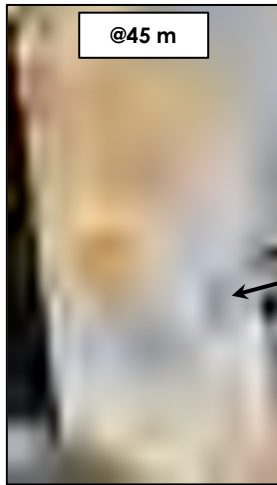


@15 m

80.0 g/t Au / 0.30 m

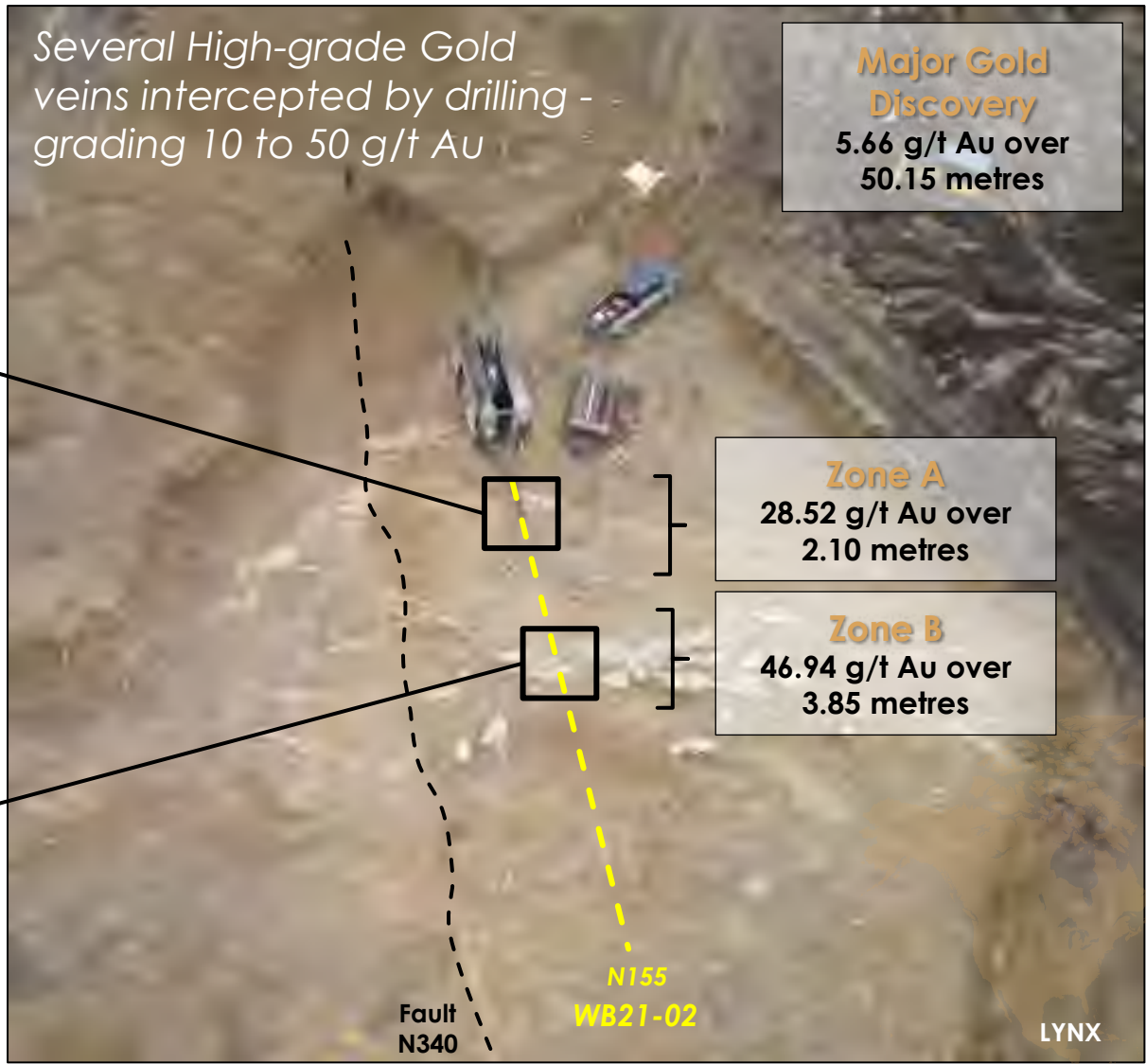


74.20 g/t Au

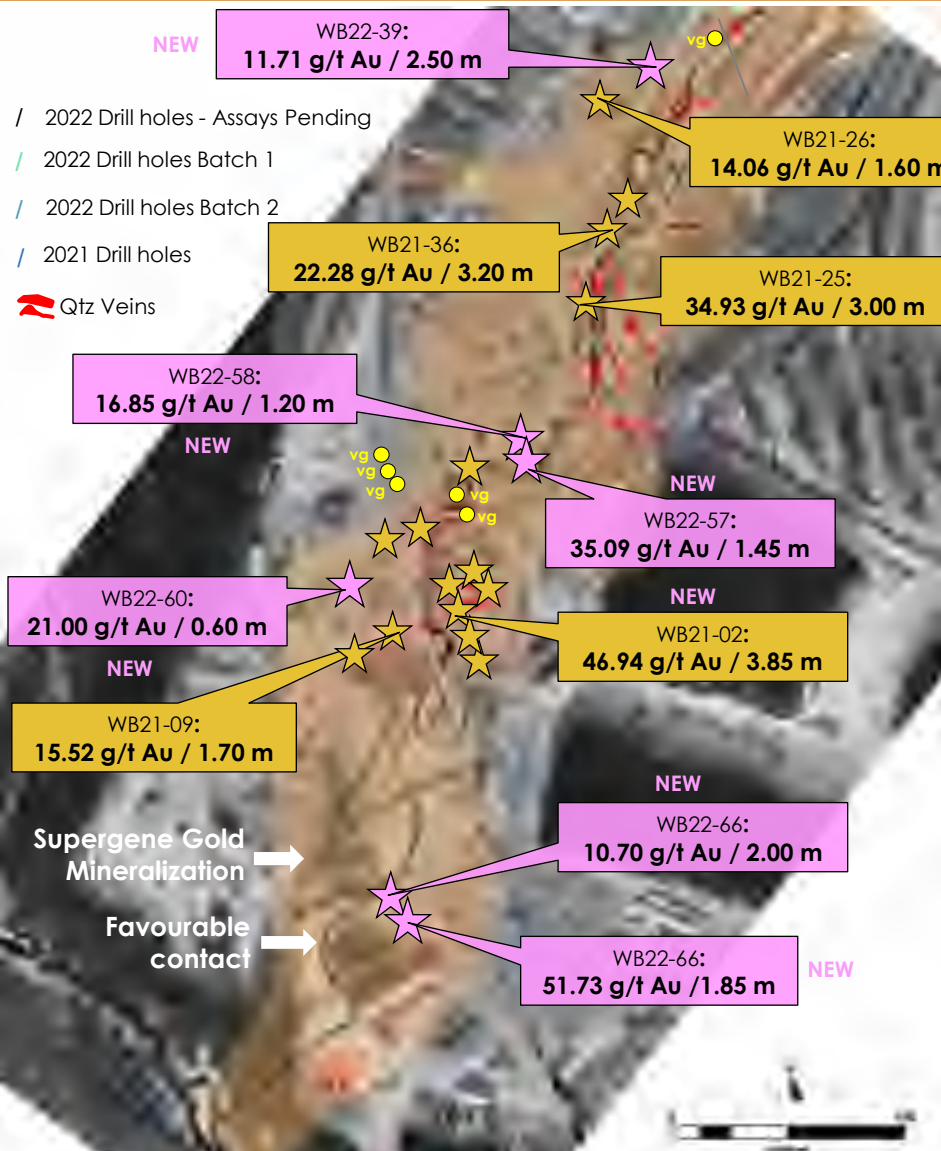


@45 m

116.50 g/t Au / 0.50 m



Au | 2022 DRILLING AT THE O'NEIL GOLD TREND

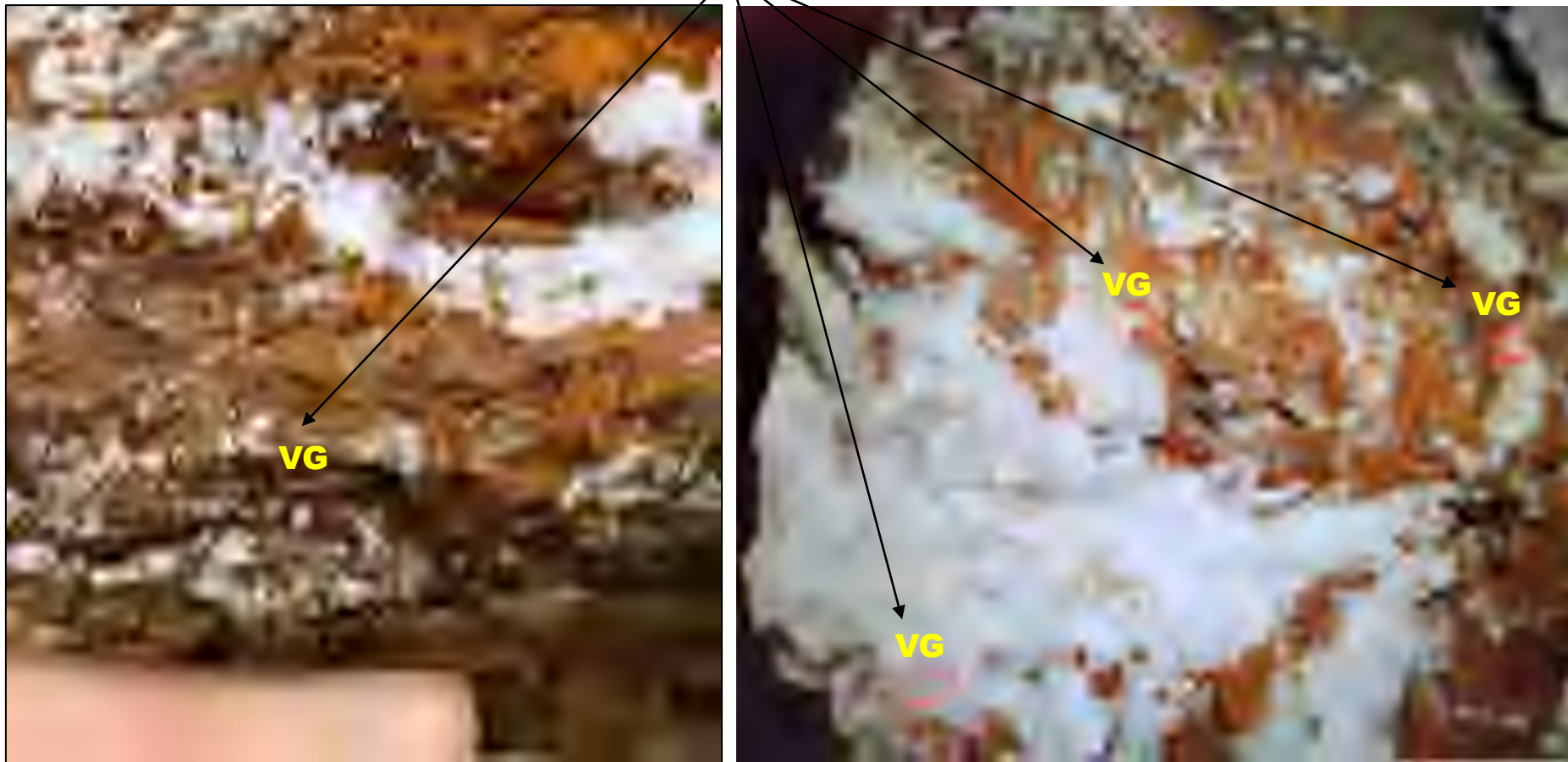


WB22-66 @66 m



Hole ID	From (m)	To (m)	Length (m)	Au (g/t)
WB21-01	4.00	6.10	2.10	12.71
WB21-02	7.20	10.20	3.00	8.33
WB21-02	13.70	15.80	2.10	28.52
WB21-02	45.60	49.45	3.85	46.94
WB21-03	55.90	58.10	2.20	7.81
WB21-05	26.00	28.00	2.00	12.64
WB21-06	46.80	49.70	2.90	16.92
WB21-09	16.30	18.00	1.70	15.52
WB21-12	28.60	32.40	3.80	6.93
WB21-16	80.00	88.35	8.35	5.11
WB21-17	107.00	111.65	4.65	4.85
WB22-25	2.00	5.00	3.00	34.93
WB22-26	25.50	27.10	1.60	14.06
WB22-35	14.90	17.50	2.60	5.83
WB22-36	3.80	7.00	3.20	22.28

Free Gold VG





WB22-66 : 51.73 g/t Au over 1.85 m



WB21-02 : 46.94 g/t Au over 3.85 m

Au | A POTENTIAL LARGE EPITHERMAL GOLD SYSTEM

> 5,000 grab samples

30,000 ha
VTEM +
radiometry

> 5,000 m of
trenching

12,700 m of
drilling

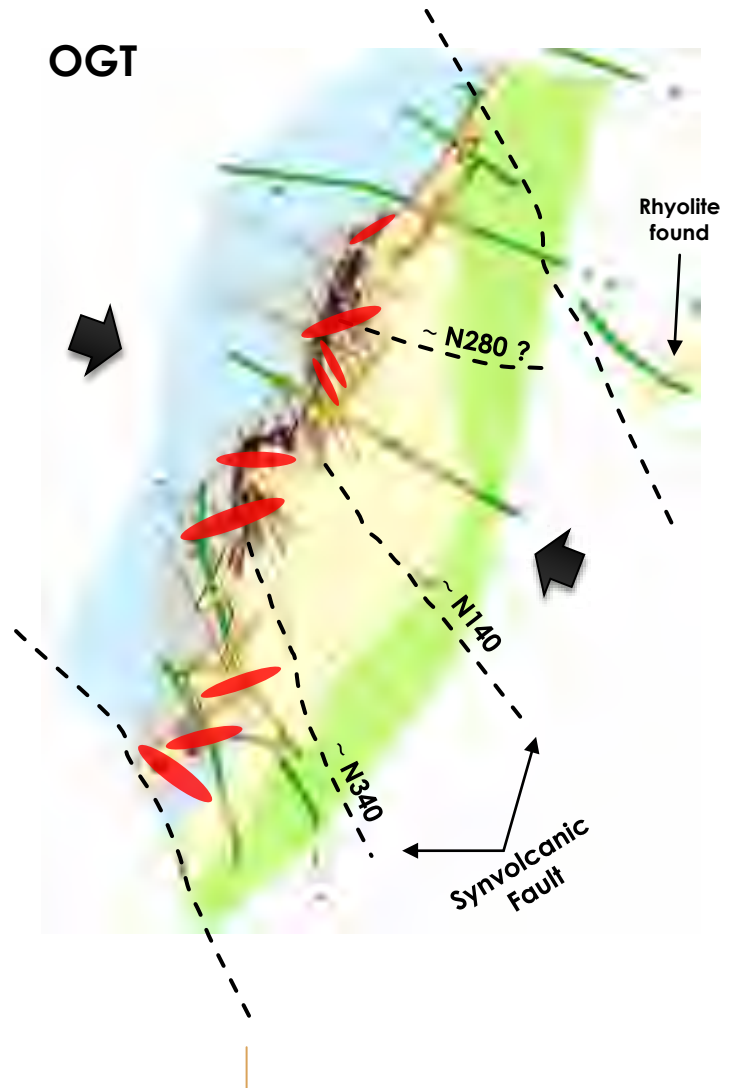
MINERALIZATION STARTS AT SURFACE



VERY HIGH GRADE SAMPLES : up to 371 g/t Au

POSSIBLE LOW SULPHIDATION EPITHERMAL GOLD DEPOSIT

OGT



*“**Low sulphidation epithermal Au mineralization at Williams Brook** is of the hypogene intrusion-related quartz-sulphide Au (Cu) transitional to the carbonate-base metal Au (Ag) end members, which has undergone substantial supergene Au enrichment, as is common in these deposits in appropriate weathering environments.”*

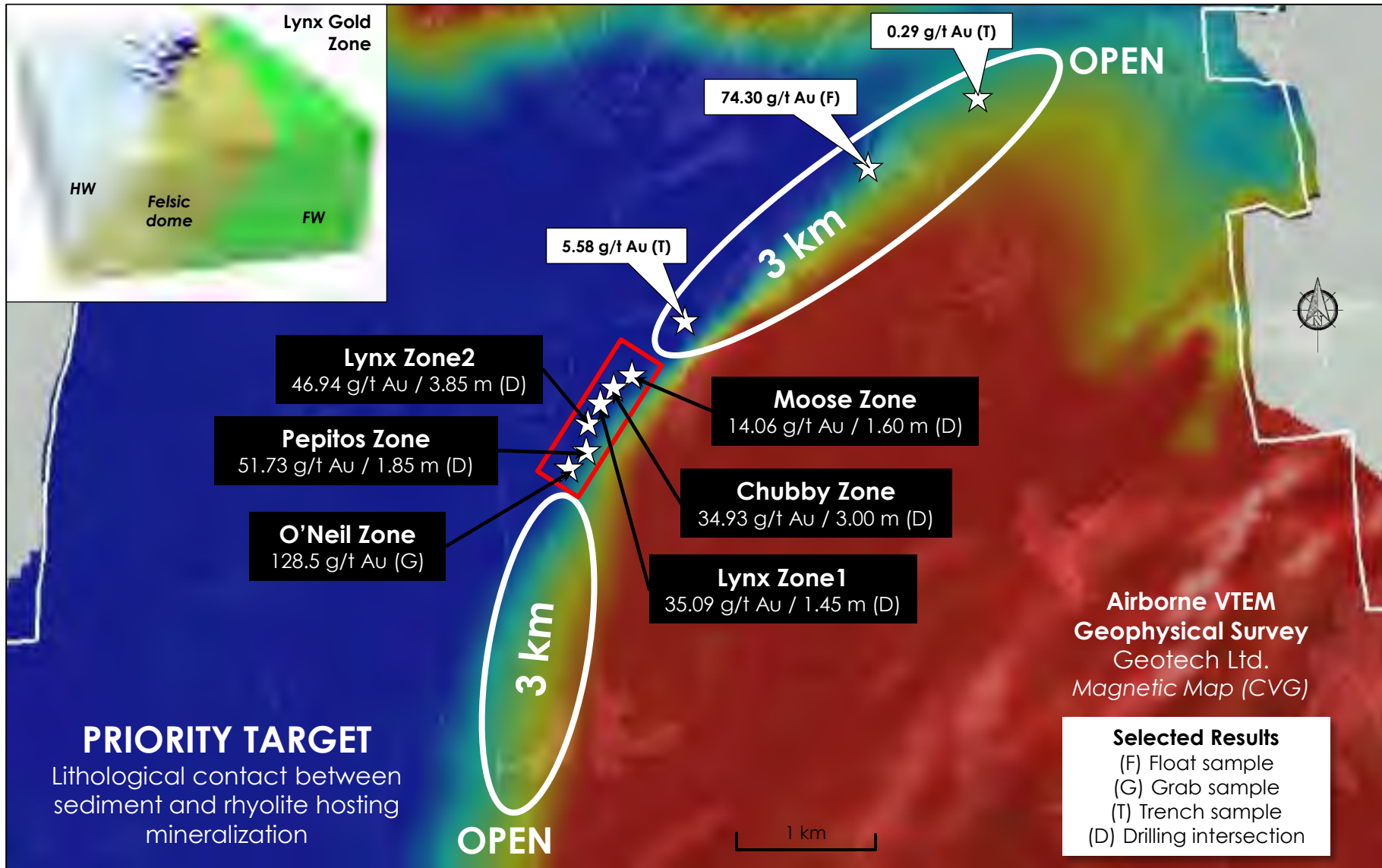


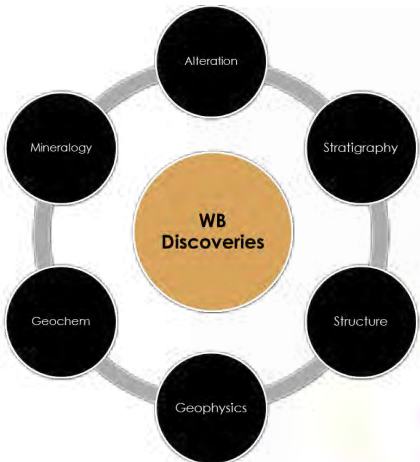
Comments on the Williams Brook Gold Project, New Brunswick, Canada as at 6 June 2022 by Greg Corbett

CAD\$5M BUDGET

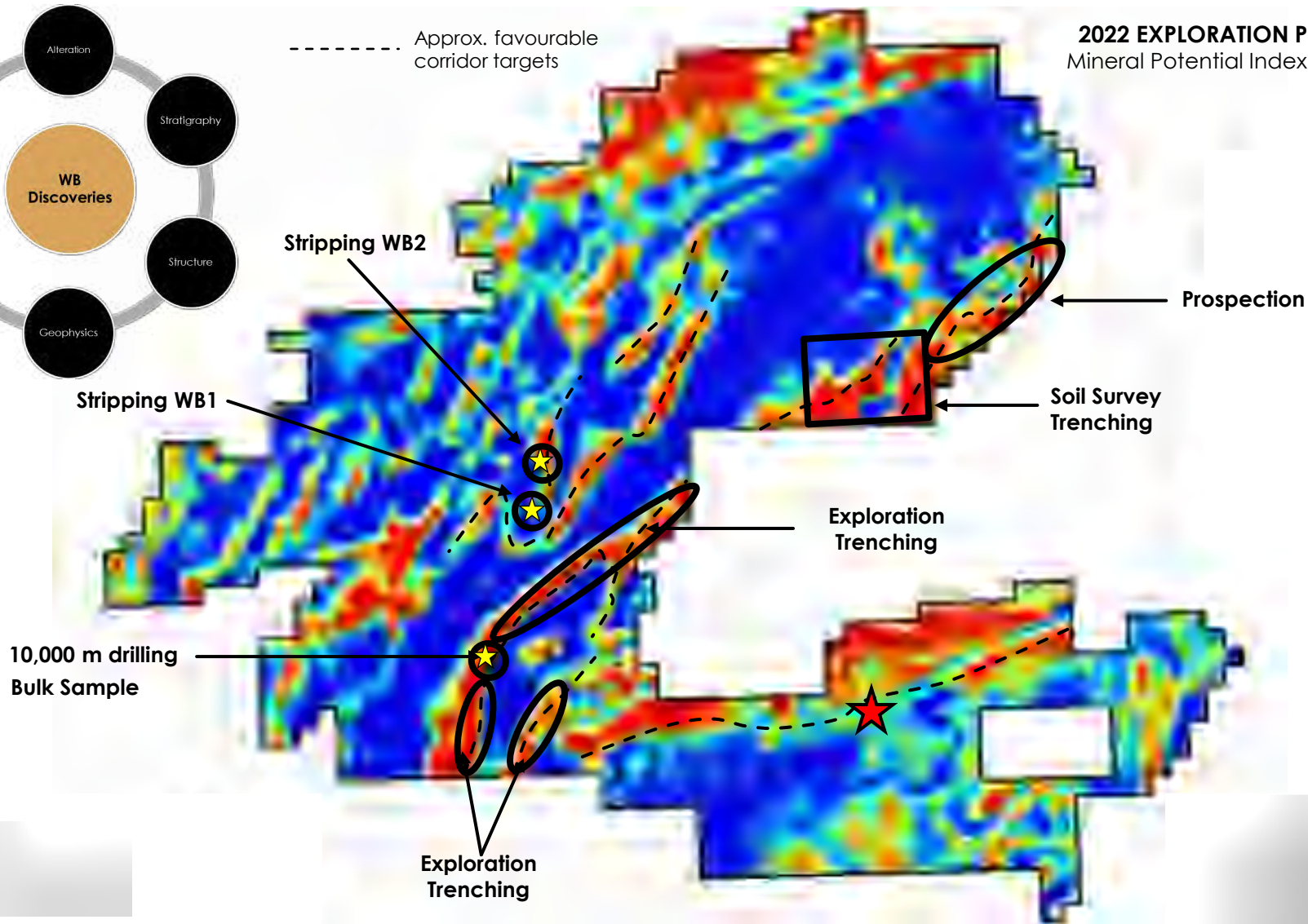


BLUE SKY POTENTIAL AT OGT – MANY AREAS NEVER DRILLED



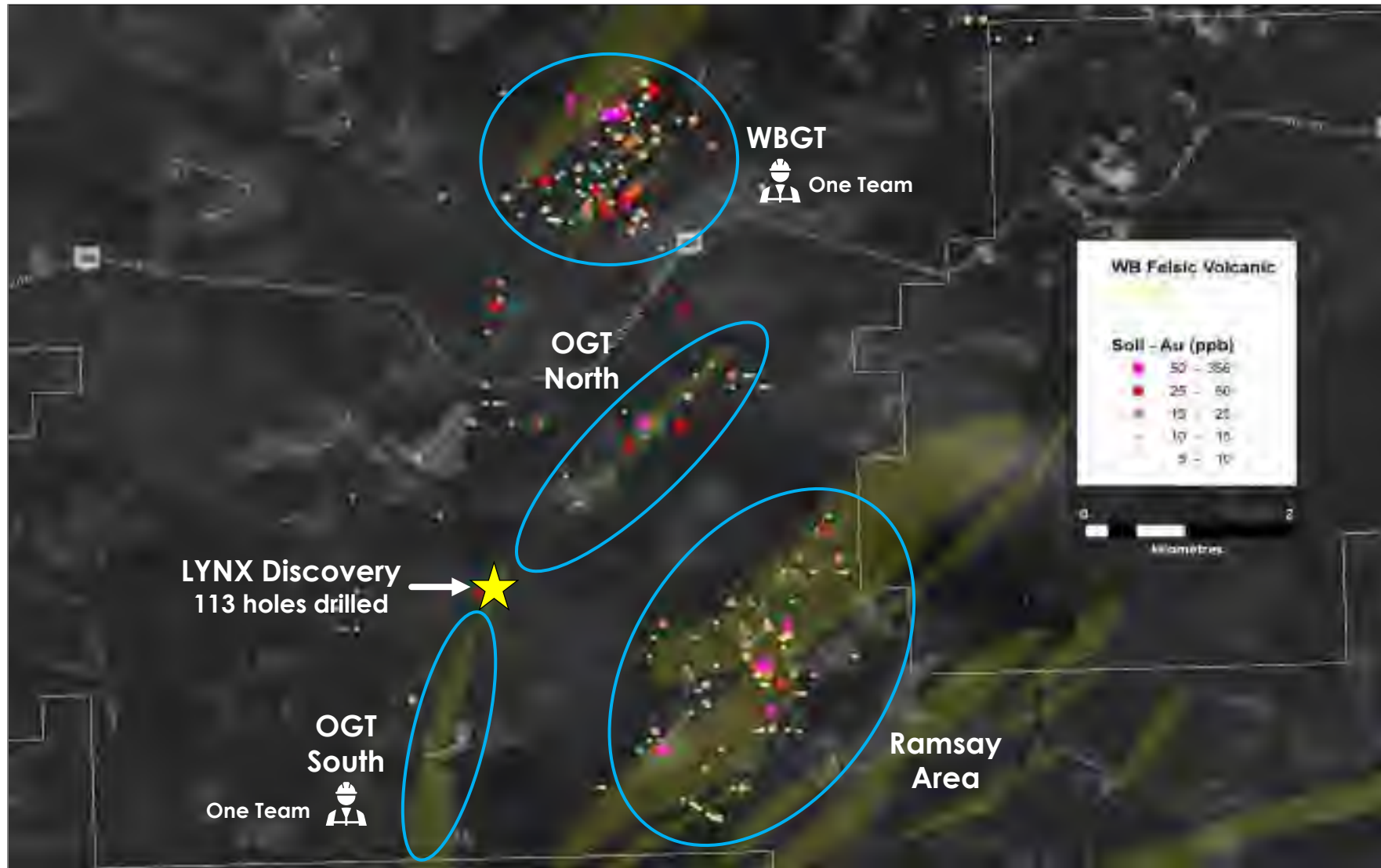


2022 EXPLORATION PROGRAM
Mineral Potential Index (MPI) Map







Au | SUMMER 2022 SURFACE EXPLORATION PROGRAM - NEW AREAS TARGETTED







-  Assay results from 54 holes (5,145 m) of the Winter 2022 drilling program
-  Assay results from the summer sampling program
-  Compilation of data including AI to identify additional priority targets on the large 40,000 ha land package
-  Launch of 2022-2023 drilling program

News is expected to be regular for the rest of 2022 and into 2023





Marcel Robillard

President & CEO

president@explorationpuma.com

1-418-750-8510

Mia Boiridy

Head Investor Relations and
Corporate Development

mboiridy@explorationpuma.com

1-250-575-3305

175, rue Legaré | Rimouski (Quebec)
Canada | G5L 3B9

