

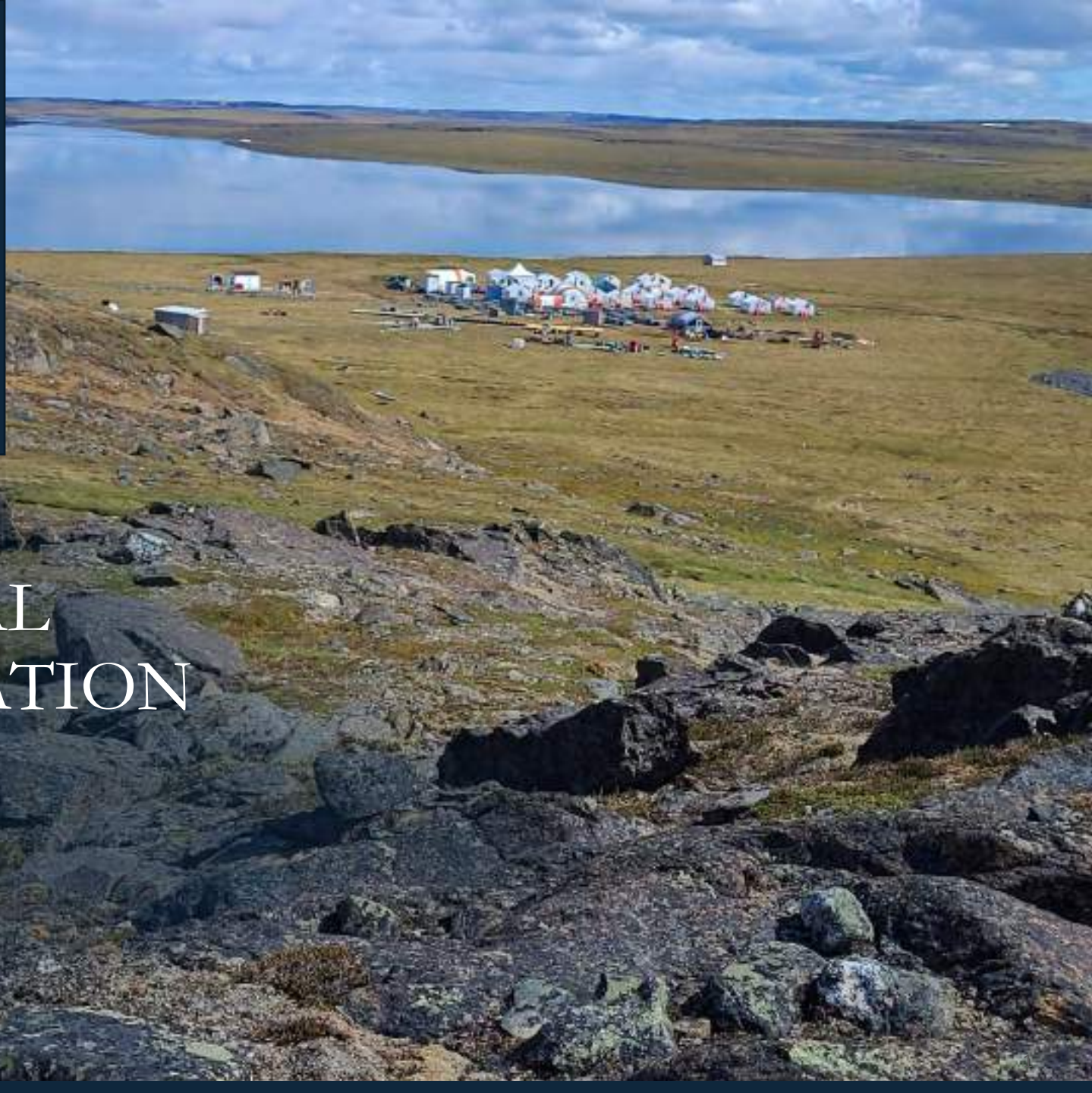
TSXV: **ORM**
OTC: **ORMFF**



GOLD AND CRITICAL MINERAL EXPLORATION IN QUEBEC

Corporate Presentation

May 17, 2023



DISCLAIMER

Cautionary Statement Concerning Forward-Looking Statements

Neither the TSXV nor its Regulation Services Provider (as that term is defined in the policies of the TSXV) accepts responsibility for the adequacy or accuracy of this presentation.

This presentation contains "forward-looking information" including without limitation statements relating to the liquidity and capital resources of Orford and potential of one or more of the Qiqavik and West Raglan properties.

Forward-looking statements involve known and unknown risks, uncertainties and other factors which may cause the actual results, performance or achievements of Orford to be materially different from any future results, performance or achievements expressed or implied by the forward-looking statements. Factors that could affect the outcome include, among others: future prices and the supply of metals; the results of drilling; inability to raise the money necessary to incur the expenditures required to retain and advance the properties; environmental liabilities (known and unknown); general business, economic, competitive, political and social uncertainties; accidents, labour disputes and other risks of the mining industry; political instability, terrorism, insurrection or war; or delays in obtaining governmental approvals, failure to obtain regulatory or shareholder approvals. For a more detailed discussion of such risks and other factors that could cause actual results to differ materially from those expressed or implied by such forward-looking statements, refer to Orford's filings with Canadian securities regulators available on SEDAR at www.sedar.com.

Although Orford has attempted to identify important factors that could cause actual actions, events or results to differ materially from those described in forward-looking statements, there may be other factors that cause actions, events or results to differ from those anticipated, estimated or intended. Forward-looking statements contained herein are made as of the date of this presentation and Orford disclaims any obligation to update any forward-looking statements, whether as a result of new information, future events or results or otherwise, except as required by applicable securities laws.

The TSXV has neither approved nor disapproved the contents of this presentation.

Qualified Person and Quality Assurance and Quality Control

The disclosure of scientific and technical information contained in this presentation has been approved by Alger St-Jean, P.Geo, Chief Geoscientist of Orford, a Qualified Person under NI 43-101.

Samples reported in this presentation and indicated as grab, outcrop, sub-outcrop, boulders and float are grab samples. Grab samples are selective by nature and values reported may not be representative of mineralized zones. All drill intervals reported in this presentation are down-hole core lengths as true thicknesses cannot be determined with available information.

The work program at Qiqavik was supervised by Alger St-Jean, P.Geo, Chief Geoscientist who is responsible for all aspects of the work, including the quality control/quality assurance program. On-site personnel at the project log and weigh all samples prior to sealing and shipping. Sample shipments are sealed and shipped to Techni-Lab, Sainte-Germaine-Boulé, Québec. All gold assays reported were obtained by either 350-g screen fire assay or standard 50-gram fire-assaying-AA finish or gravimetric finish (method 1A2-5 and 1A3-50) at the 350-g screen assay method is selected by the site geologist or the lab when samples contain coarse gold or higher percentage of sulfide mineralization that may be associated with gold relative to surrounding intervals. All samples are also analyzed for multi-elements, including copper and silver, using a four-acid method with an ICP-EOS and ICP-MS finish at Techni-labs affiliated Actlabs in Ancaster, Ontario. Overlimits were analyzed by peroxide fusion with ICP-EOS finish. Drill program design, Quality Assurance/Quality Control ("QA/QC") and interpretation of results is performed by qualified persons employing a QA/QC program consistent with NI 43-101 and industry best practices. Standards and blanks are inserted at a minimum of 10% and 5% for core and grab samples respectively for QA/QC purposes in addition to those inserted by the lab. A subset of samples has not yet been sent for a verification assay at another lab.

Techni-Lab Laboratory, is a subsidiary of Act Labs, is accredited (n. 707) by the Standards Council of Canada and found to comply with the requirements of ISO/IEC 17025:2005 (CAN-P-4E) and CAN-P-1579.

The technical information disclosed herein in respect of the Qiqavik Property is based on the independent report of Clement Dombrowski, P.Geo and Sylvain Desbiens P.Geo. titled "NI 43-101 Technical Report on Qiqavik Project, Northern Quebec, Canada" effective September 14, 2017, and on Orford Mining's press releases available on SEDAR. The information disclosed herein in respect of the West Raglan Property is based on the independent report of Clement Dombrowski, P.Geo. titled "NI 43-101 Technical Report on West Raglan Project, Northern Quebec, Canada" effective February 20, 2017. and on Orford Mining's press releases available on Sedar.





BIG PROPERTIES + BIG GRADES = BIG POTENTIAL

Approx. 1,839 sq kms
of prospective land in 26
properties in Quebec Canada with
~6,000 metres drilled in 2022

Qiqavik

Gold/Copper/Li

- 402 sq kms
- 100% owned
- Drilled 2,720 metres
- Discovered several new Gold Bearing Quartz Carbonate vein and alteration system.
- Visible Gold in Core
- New Transformative targeting for 2023
- RAB Drilling program for 2023 to test 40-60 targets.

+

West Raglan

Ni/Cu/PGM

- 713 sq kms
- 51% Wyloo/49% Orford
- Wyloo Metals Earning in
- Drilled 2,589 metres
- 2022 drilling - new Nickel Sulphide lens and extended size of Frontier zone
- 2023 program includes Airborne Magnetic/EM survey, geological and geophysical desk top study and contingent ground follow-up

+

Nunavik Lithium

Li

- 455 sq kms
- (13 properties)
- 100% owned
- Strong lake lithium indicators in lake sediments or grab samples and/or pegmatites mapped
- No previous exploration for Lithium in Region.
- 70 kms to all season Deep Sea port

+

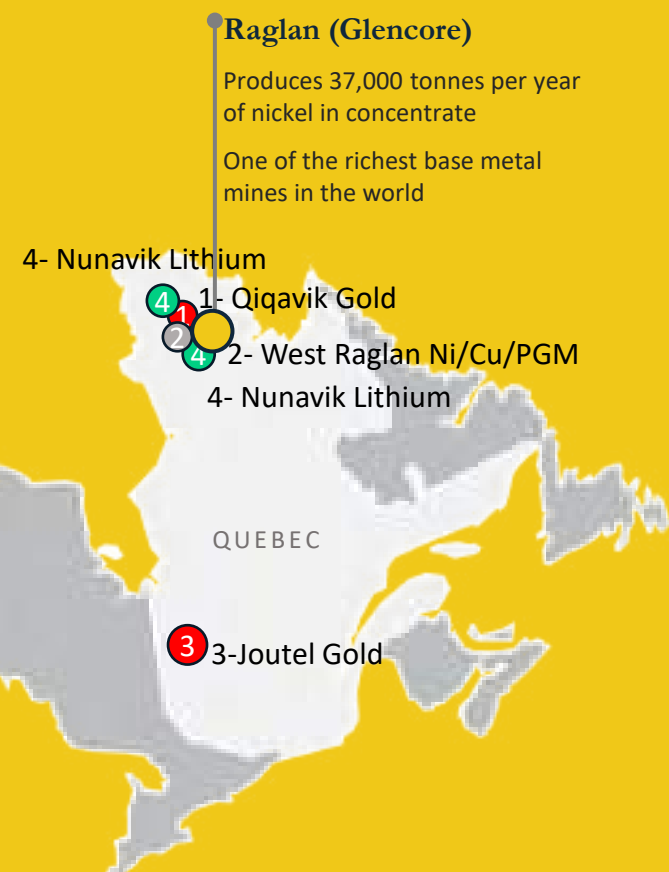
Joutel Regional

Gold/Copper

- 260 sq kms
- 100% owned or option to own 100%
- At Joutel Eagle, 707 metres drilled in 2022 and 2,535 metres in 2023
- Delineated the South Gold Zone on Joutel Eagle and discovered a thicker gold zone than previously known and higher gold grades.
- New North Gold zone discovered

PROJECT PORTFOLIO – LARGE REGIONAL PROPERTIES

2023 to be a big Year of Exploration
across our properties



1,544 km² land position in the highly prospective and underexplored Cape Smith Belt and region and 260 km² in the heart of the Quebec Abitibi.

Quebec is consistently viewed as one of the most attractive jurisdictions from a mining investment point of view.

1. Qiqavik Project (Au, Cu, Li) (100%)

- Camp Scale Property with several multi ounce boulder trains such as the Annick Trend intersecting major structures such as the IP Lake Structural zone.

2. West Raglan Project (Ni, Cu, PGE's) (49% Interest)

- Wyloo Metals Pty Ltd.(at 51%) entered an earn in agreement with Orford in 2021 to earn up to an 80% interest by spending \$25 million amongst other items.
- ~Frontier Zone: identified five high-grade (2-3% Ni, 3+ g/t PGE) mineralized lens clusters over a 2,500 m strike (comparable geology to Glencore's Raglan Mine)

3. Joutel – Eagle (option to 100%) ,McClure East, Joutel South and Joutel Omega (Au) (100%)

- Located in the prolific gold mineralized Casa Berardi /Joutel Structures, in the heart of the Abitibi region (accessible by road)
- Area last saw exploration in the early 1990's.
- South Gold Zone drilling confirms continuity along with new North Gold Zone.

1. Lithium Properties in Nunavik (Li) (100%)

- 455 square kilometres of land acquired in February 2023 covering 19 properties.

Royalties

Owns a 3.5% NSR on the Falan property (Baroyeca gold and Silver Inc.) and a 2% NSR on the Santa Ana property (Outcrop Gold Corp.) both in the Mariquita Silver district of Columbia. This district was one of Colombia's most prolific colonial silver camps.

1. (Système d'information géominière of Québec "SIGEOM", Quebec Ministry of Energy and Natural Resources. April 20, 2020)

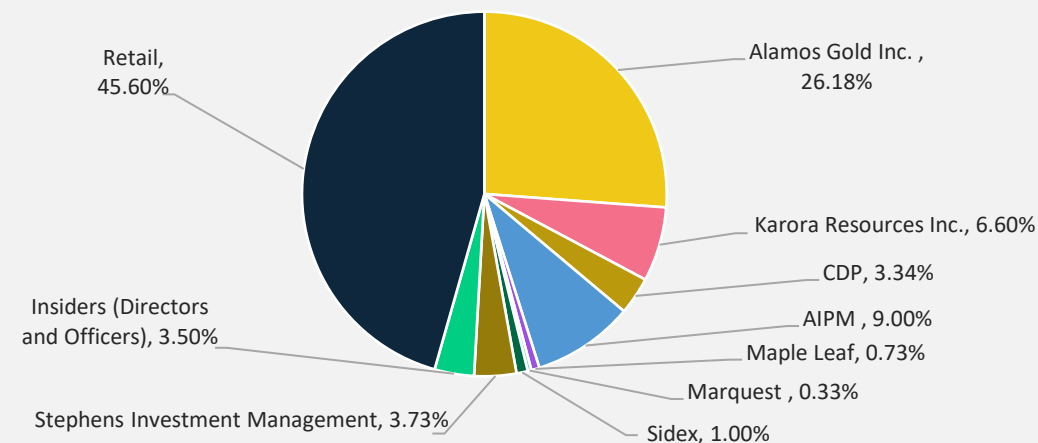
CORPORATE SNAPSHOT

Capital Structure and Share Performance – Raised \$28 million since Oct 2017 RTO

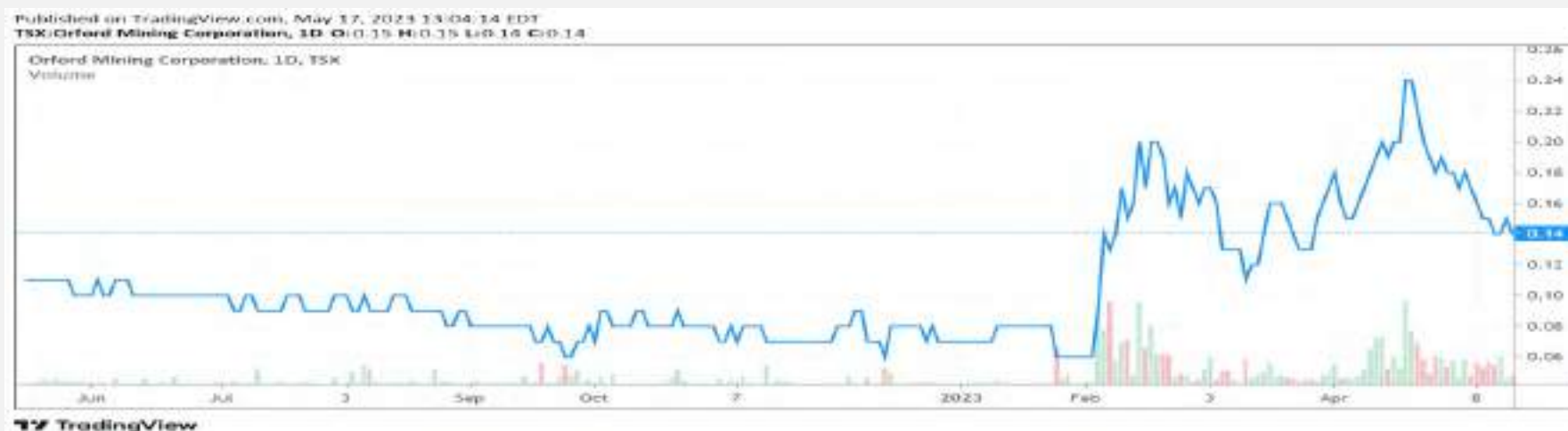
Capital Structure

Ticker	TSXV:ORM
Share Price (as of May 17, 2023)	C\$0.14
Basic Shares Outstanding ¹	170.46M
Options (@ average \$0.18 strike)	12.78M
Warrants (@ average \$ 0.23 strike)	26.64M
Fully Diluted Shares Outstanding	209.88M
Market Capitalization (Basic)	C\$23.86M
Cash (December 31, 2022)	C\$2.39M

Share Ownership



TSX-V (April 28, 2023)



MANAGEMENT

High Quality Exploration and Finance Team – With a Solid Track Record of Wealth Creation

DAVID CHRISTIE

President, CEO, and Director

- Professional Geologist (in Ontario and NWT and Nunavut) with more than 35 years of experience in the resource sector
- Former Vice President with Goodman & Company Investment Counsel and Dundee Resources Inc.
- Former President, CEO, and Director of Eagle Hill Exploration and former mining research analyst at TD and Scotia
- Former Director of eCobalt Solutions Inc., Osisko Mining Inc. and Condor Precious Metals (private)

CINDY DAVIS

CFO

- Accounting professional with 18 years of accounting experience, 12 of which has been with Marrelli Support Services at a Senior Level. Registered as a CA and a CPA.

ALGER ST-JEAN

Chief Geoscientist

- Professional Geologist (in Quebec and Ontario) with +25 years of experience in mineral exploration and development
- Currently Chief Operating Officer of Dumont Nickel – Magneto Investments LP
- Previously VP Exploration & director of Orford Mining, former VP Exploration of RNC Minerals (Karora Resources) and former Senior Geologist at Xstrata Nickel (formerly Falconbridge)

MICHELLE SCIORTINO

VP of Exploration

- Professional Geologist (in Ontario) with +14 years of experience in mineral exploration and development
- Previously Senior Project Geologist with RNC Minerals (Karora Resources), and Senior Geologist of Orford Mining



BOARD OF DIRECTORS

High Quality Capital Markets/Mining Focused Board

PETER MACPHAIL

Chairman

- Professional Engineer with over 25 years of operational experience
- Former Chief Operating Officer of Alamos Gold Inc,
- Former Chief Operating Officer of AuRico Gold

LAWRENCE SMITH

Director

- +25 years of experience in investment management, equity research, and banking – MBA and CFA holder
- VP Portfolio Management and Research at CIBC Asset Management, Director of Equity Research at Scotia Capital and Blackmont Capital, and Project Manager – Corporate Development at Rio Algom Limited

JOHN MCCLUSKEY

Director

- John McCluskey is the President and Chief Executive Officer (and director) of Alamos Gold Inc. and has held this position since 2003 when he co-founded the Company with mining hall of famer Chester Millar.
- Mr. McCluskey was formerly a Director of the World Gold Council and is currently an Alternative Director.
- Mr. McCluskey was the recipient of the 2018 Murray Pezim Award for Perseverance and Success in Financing Mineral Exploration by the British Columbia Association for Mineral Exploration. This award recognized Mr. McCluskey's role in the acquisition, financing, and encouragement of successive discoveries at Mulatos, as well as his ongoing success as CEO of Alamos.
- Mr. McCluskey was also named Ontario's 2012 Ernst & Young Entrepreneur of The Year, based on a judging panel's assessment of financial performance, vision, leadership, innovation, personal integrity and influence, social responsibility, and entrepreneurial spirit.

MARK GOODMAN

Director

- Former Executive VP and COO of Dundee Corporation and Chairman of Dundee Sustainable Technologies
- Previous CEO of Ryan Gold, Valdez Gold, Cogitore Resources, a base metal exploration company in Northern Quebec

BEN PULLINGER

Director

- Professional Geologist (in Ontario) with over 17 years of exploration and mining experience
- Currently Senior Vice President Exploration and Business Development at ATEX Resources Inc.
- Former Executive Vice President of Geology at Golden Star Resources Ltd.
- Former Senior Vice President of Geology and Business Development at Excellon Resources Inc.
- Former Vice-President Exploration at Roxgold Inc.

MONIQUE RABIDEAU

Director

- Monique is the Practice Lead, Capital Markets and Securities for Practical Law Canada at Thomson Reuters. Previously with Fogler, Rubinoff LLP, a full service law firm in in Toronto where she practiced for 22 years in the business law dept.
- Chair of the Board of the Dancer Transition Resource Centre.
- Graduated magna cum laude from McGill in 1988 then obtained her Juris Doctor from the University of Toronto in 1991
- Monique was previously a director of eCobalt Solutions Inc.



QIQAVIK GOLD PROJECT

Nunavik Region

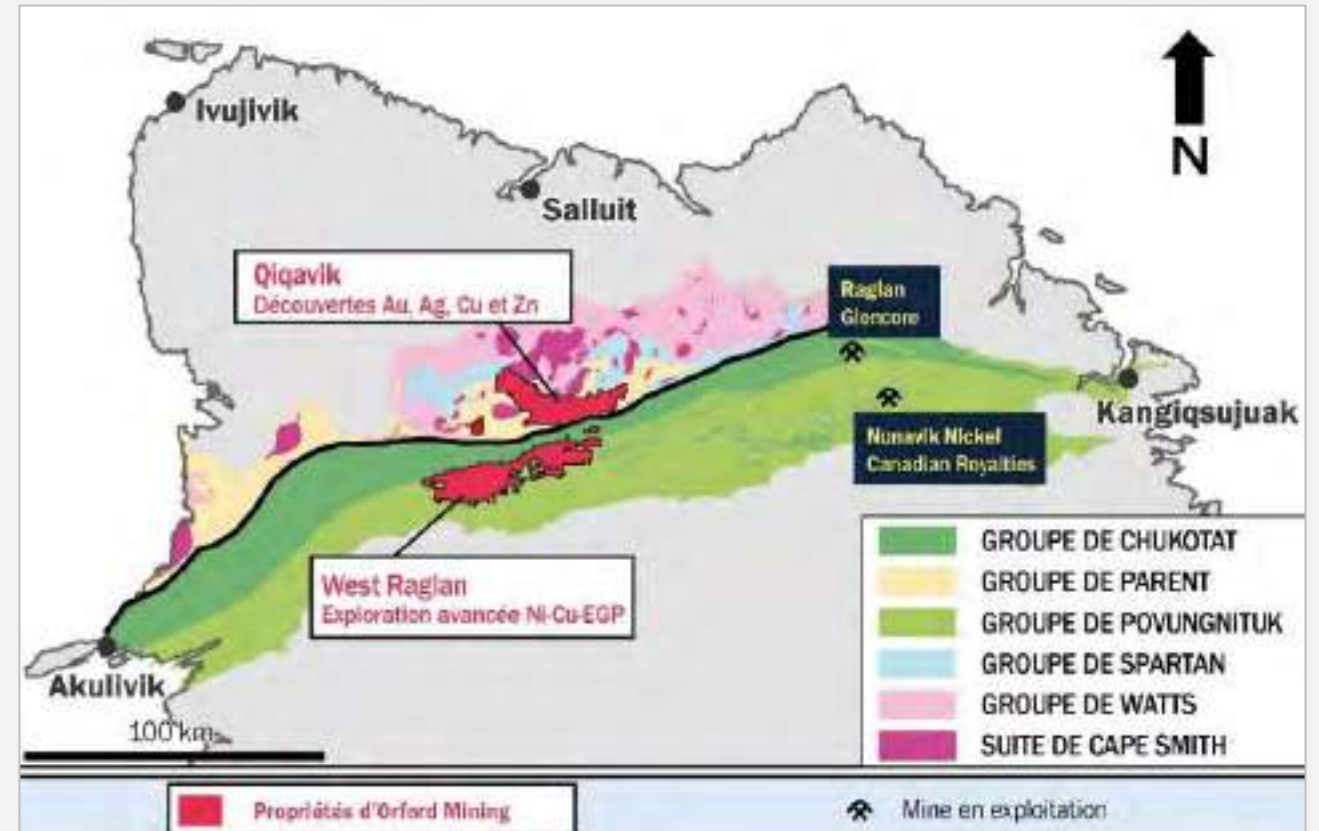


QIQAVIK GOLD PROJECT

Large, Highly Prospective Land Package in an Underexplored Emerging Gold District

40-km long Qiqavik property remains largely unexplored with potential for multiple large gold deposits

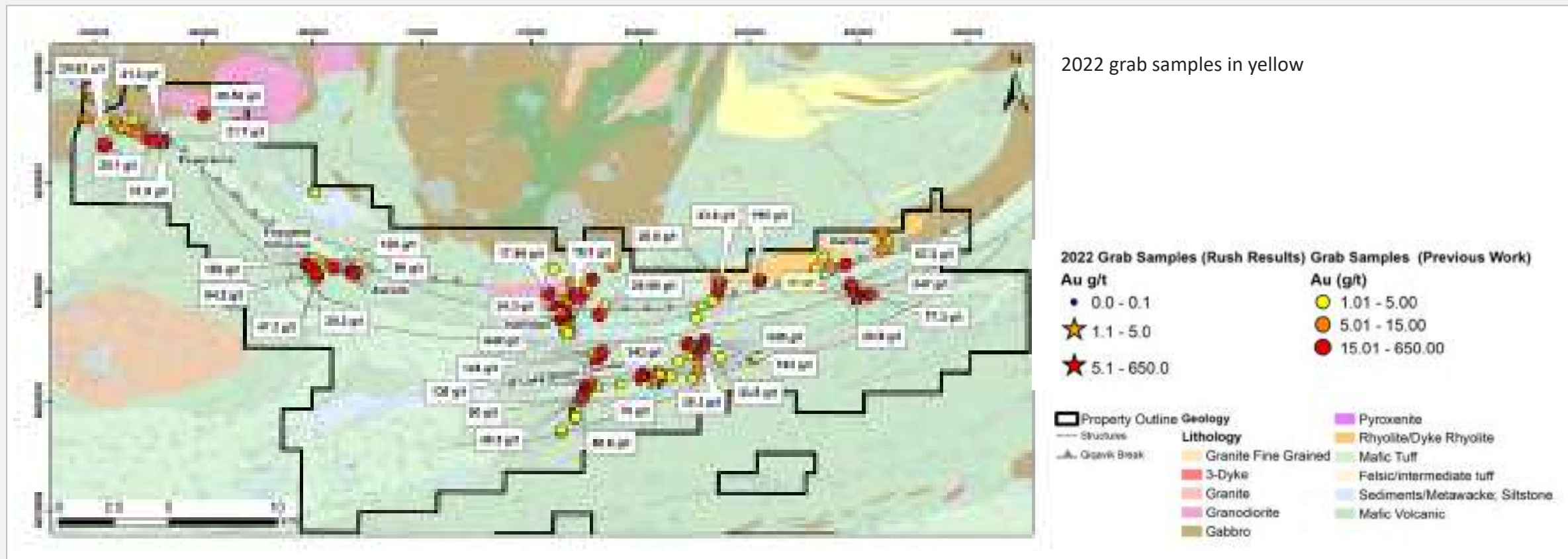
- 100% interest in ~402 km² property
- The northern volcano-sedimentary portion of the Belt remains virtually unexplored
- Gold districts with similar tectonic and age setting to the Cape Smith Belt include¹:
- Flin Flon/Snow Lake, Canada
- Ashanti Belt, West Africa
- Tanami Goldfields, West Australia
- Tapajos-Parima Belt, Brazil
- More than 12 significant mineralized areas discovered across the property in a variety of geological environments



1. This information is not necessarily indicative of the mineralization on Orford Mining's properties

QIQAVIK GOLD PROJECT

High grade gold surface showings are prolific across the +40 km long property



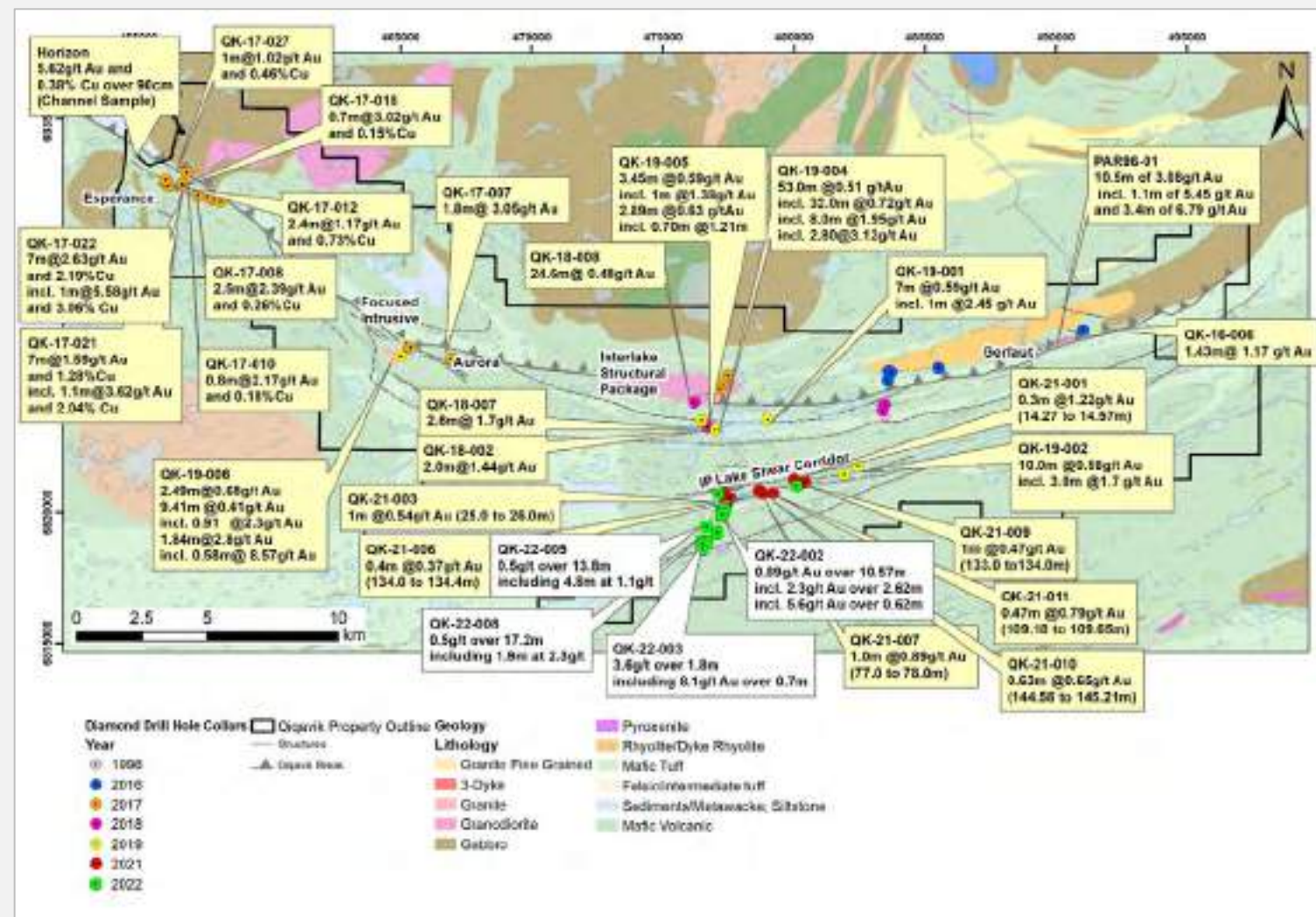
Note that grab samples are selective by nature and values reported may not be representative of mineralized zones

QIQAVIK GOLD PROJECT – DIAMOND DRILLING PROPERTY WIDE

Gold Mineralization is widespread across the large property in different geological environments

- The 2022 drill program included 14 drill holes and 2,720 metres for a total of 10,948 metres in 70 holes over the 402 sq kilometre property which was increased by 5 sq kilometres this summer to cover the western extension of the Bergeron fault.
- Important to remember there is no historic work other than the two Falconbridge holes searching for nickel and hitting gold.
- The 2022 results returned significant gold mineralization in a Quartz carbonate veining system south of the IP Lake Structural zone up to the Bergeron Fault with results of up to 8.1 g/t gold over 0.7 metres.

Note that All drilling intervals are down-hole lengths. True thicknesses cannot be estimated with available information



QIQAVIK GOLD PROJECT - ANNICK BOULDER TRAIN

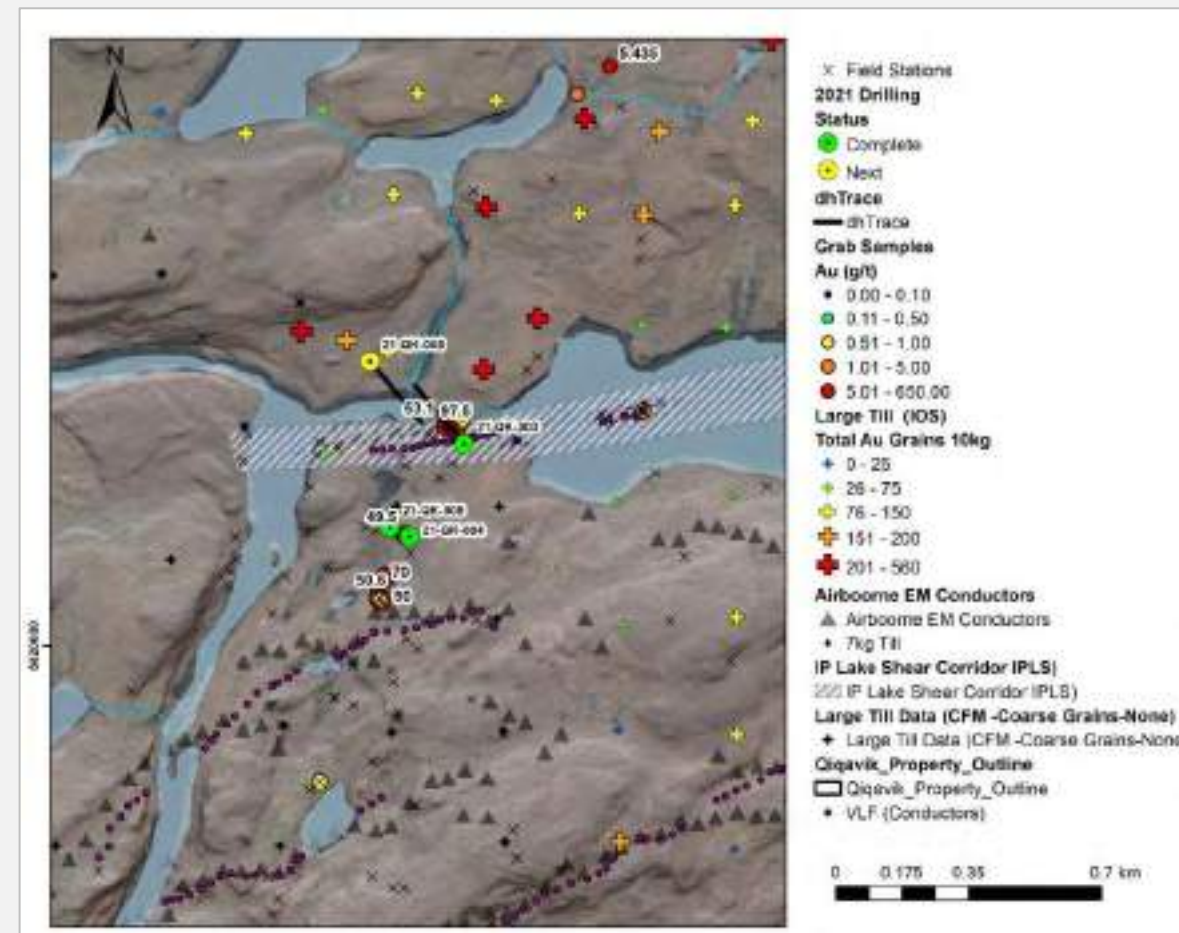
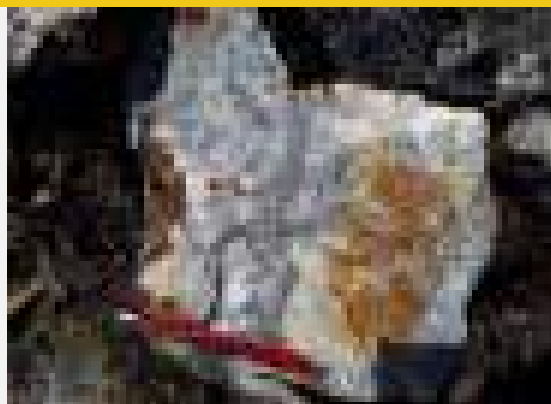
Geological mapping, Magnetics, IP survey, VLF survey and till sampling all used to help target the potential source

Sample 167041, example of the Annick Style Samples:

*Grey quartz – iron Carbonate with veins of massive pyrite and arsenopyrite.
Sample reported 49.5g/t Au , found 200 metres south of the IPLS*

With grades of up to 648 g/t Au along the Annick boulder train it is a major conduit of gold bearing fluids resulting in spectacular gold mineralization.

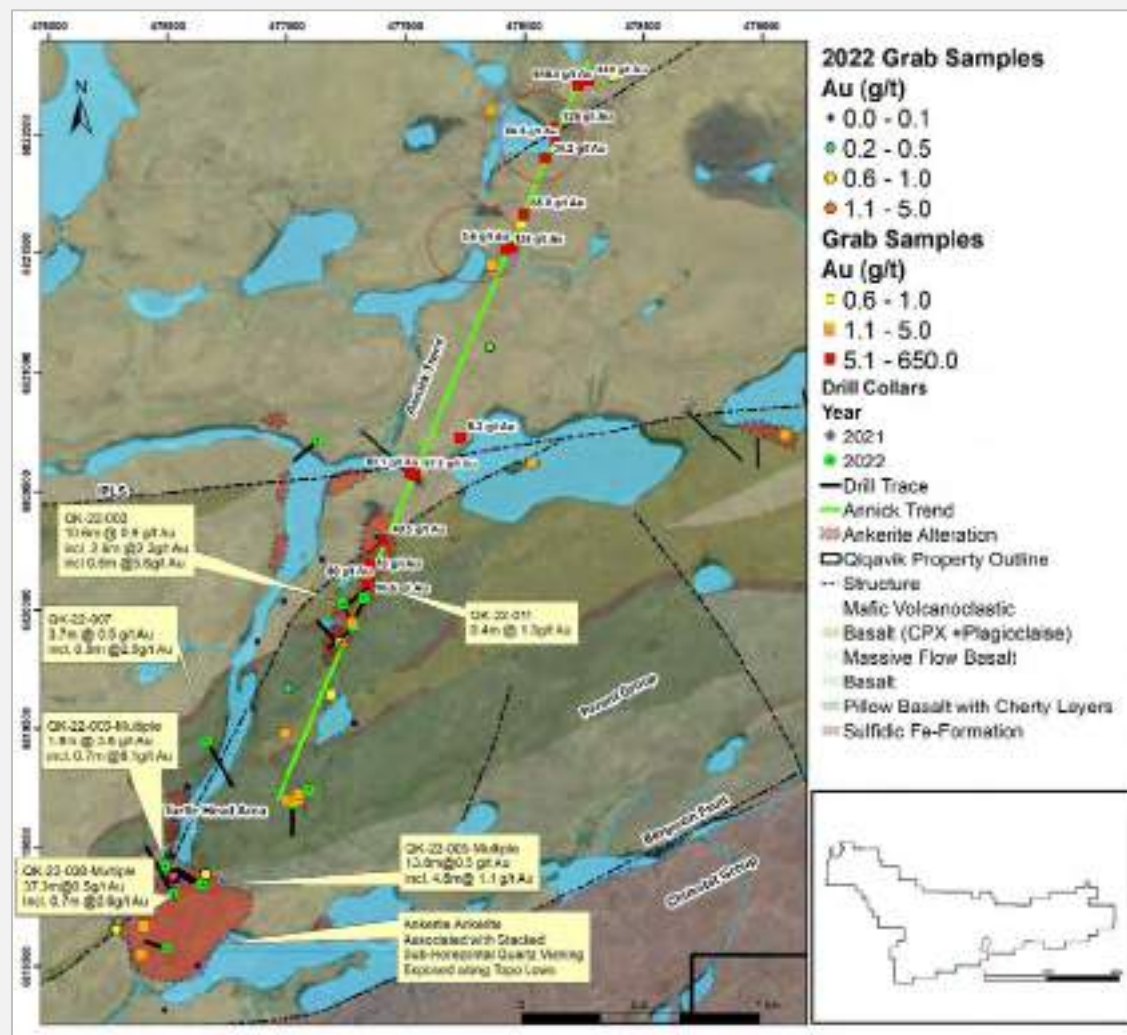
Drilled holes 4 and 5 drilled under pit of 2 m x 2m sized Annick material from east and west but did not hit the vein.



Note that grab samples are selective by nature and values reported may not be representative of mineralized zones

QIQAVIK GOLD PROJECT - NEW GOLD BEARING VEIN SYSTEM

The 2022 program was successful in uncovering a gold bearing Quartz-Iron Carbonate-Sulphide alteration system

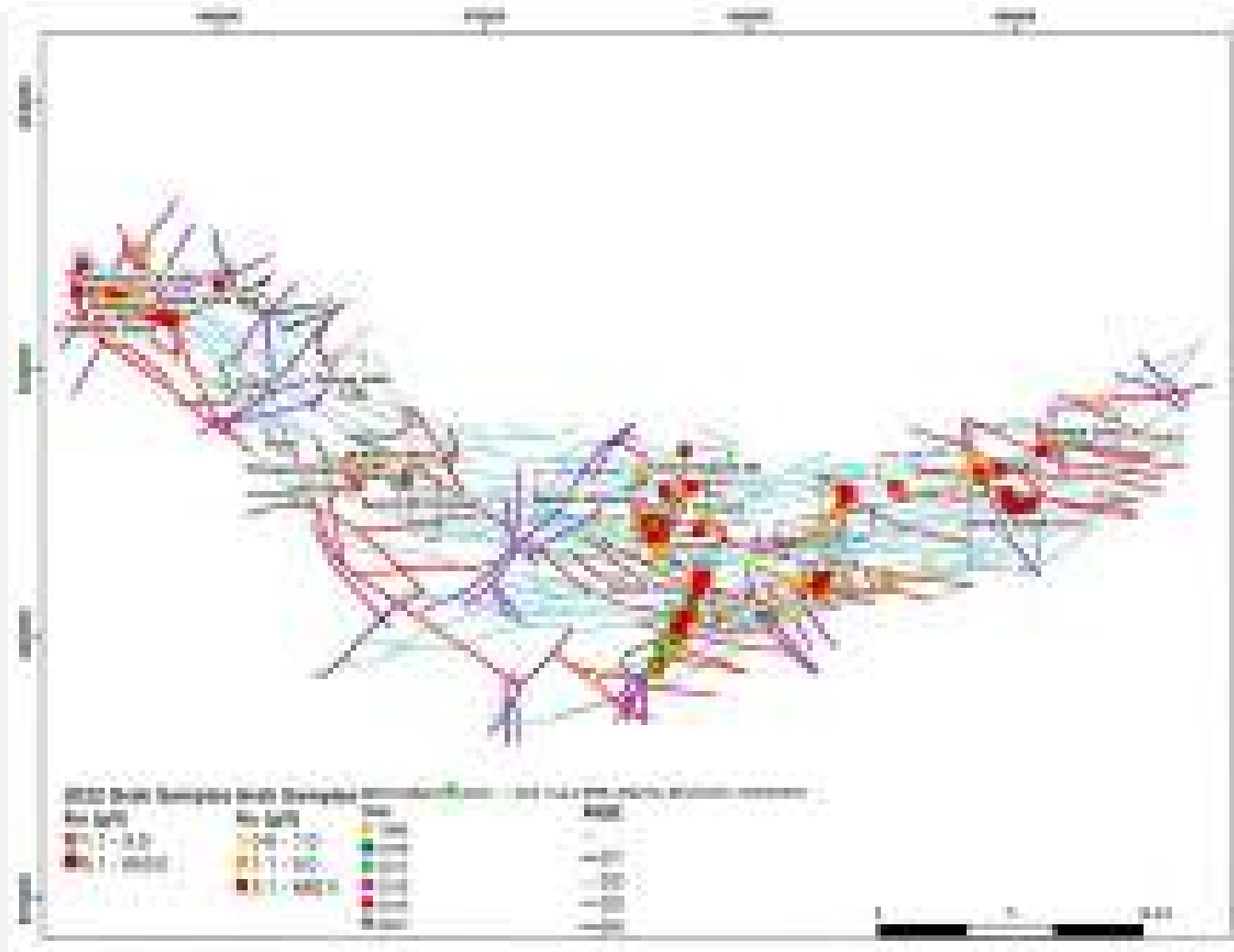


- Drilled 14 holes, 5 holes were drilled in search of the Annick boulder train source (2,4,9,11,13), and the additional holes (3, 5, 8, 14,) showed that the system may be more extensive with similar mineralization elsewhere.
- Orford has discovered several Quartz – Iron Carbonate sulphide alteration zones with sulphides over a 2 km north-south strike length.
- They appear to have a shallow dip and extensive north-south, and likely have been impacted by some later extensional structural events.
- We believe we are in the system that produced the high-grade Annick boulders because the characterization of the mineralization and quartz–iron carbonate but not the exact same source of mineralization.
- For 2023 we will use new glacial interpretation on our till sample results and boulder dispersion trains. To target sources very close high grade boulder results and high gold grain in till counts along north-east trending structures.
- We will utilize a RAB style drill with Diamond drill follow up, to allow for a larger number of drill hole tests of the many high grade gold targets on the property.

Note that grab samples are selective by nature and values reported may not be representative of mineralized zones. Note that All drilling intervals are down-hole lengths. True thicknesses cannot be estimated with available information

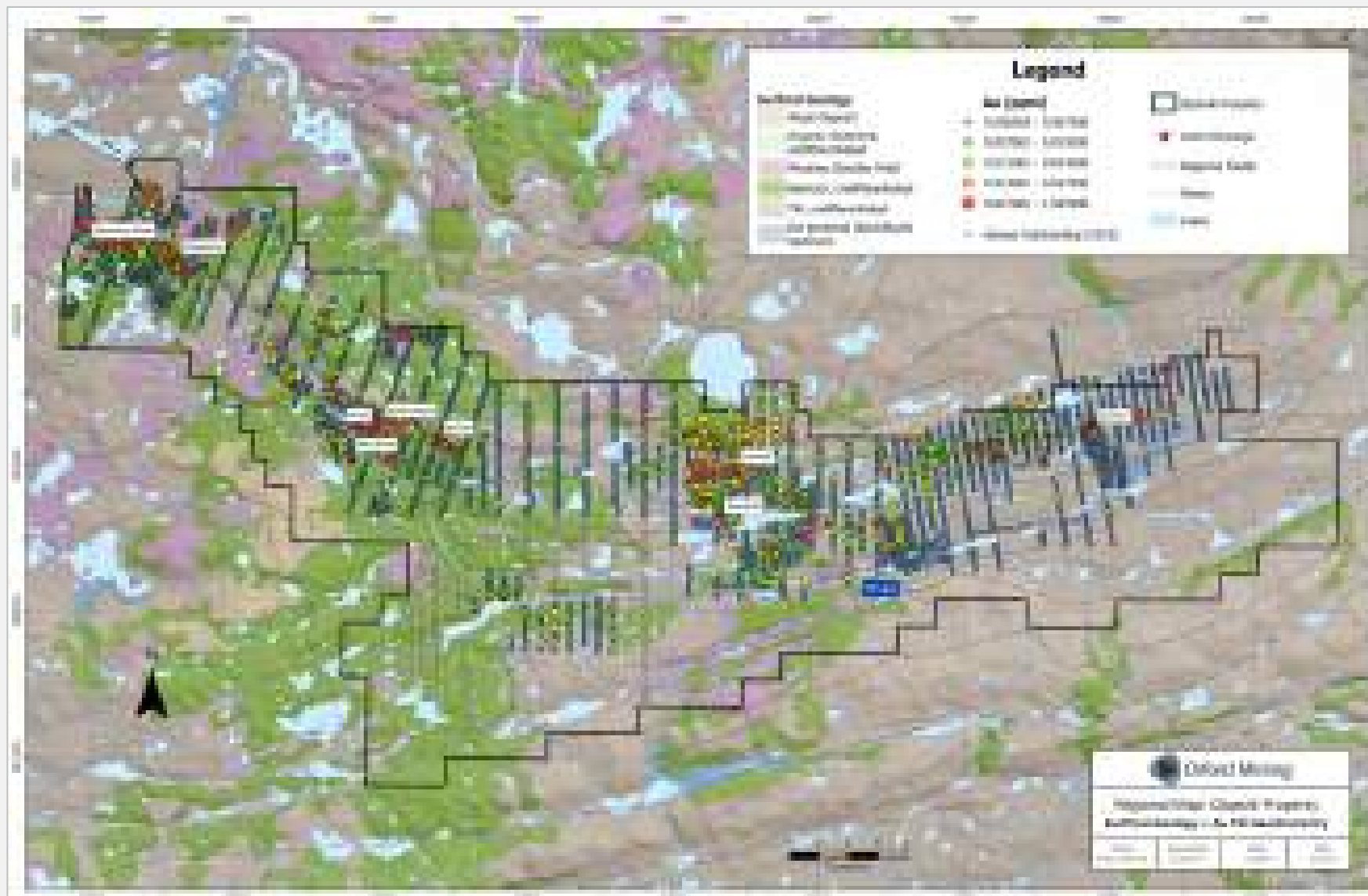
QIQAVIK STRUCTURAL RE-INTERPRETATION

Seeing strong North East and North West structures that will be gold mineralization targets in 2023



QIQAVIK GOLD PROJECT - GOLD IN TILL ANOMALIES

A Number of Strong Anomalous Sectors for Further Follow - Up





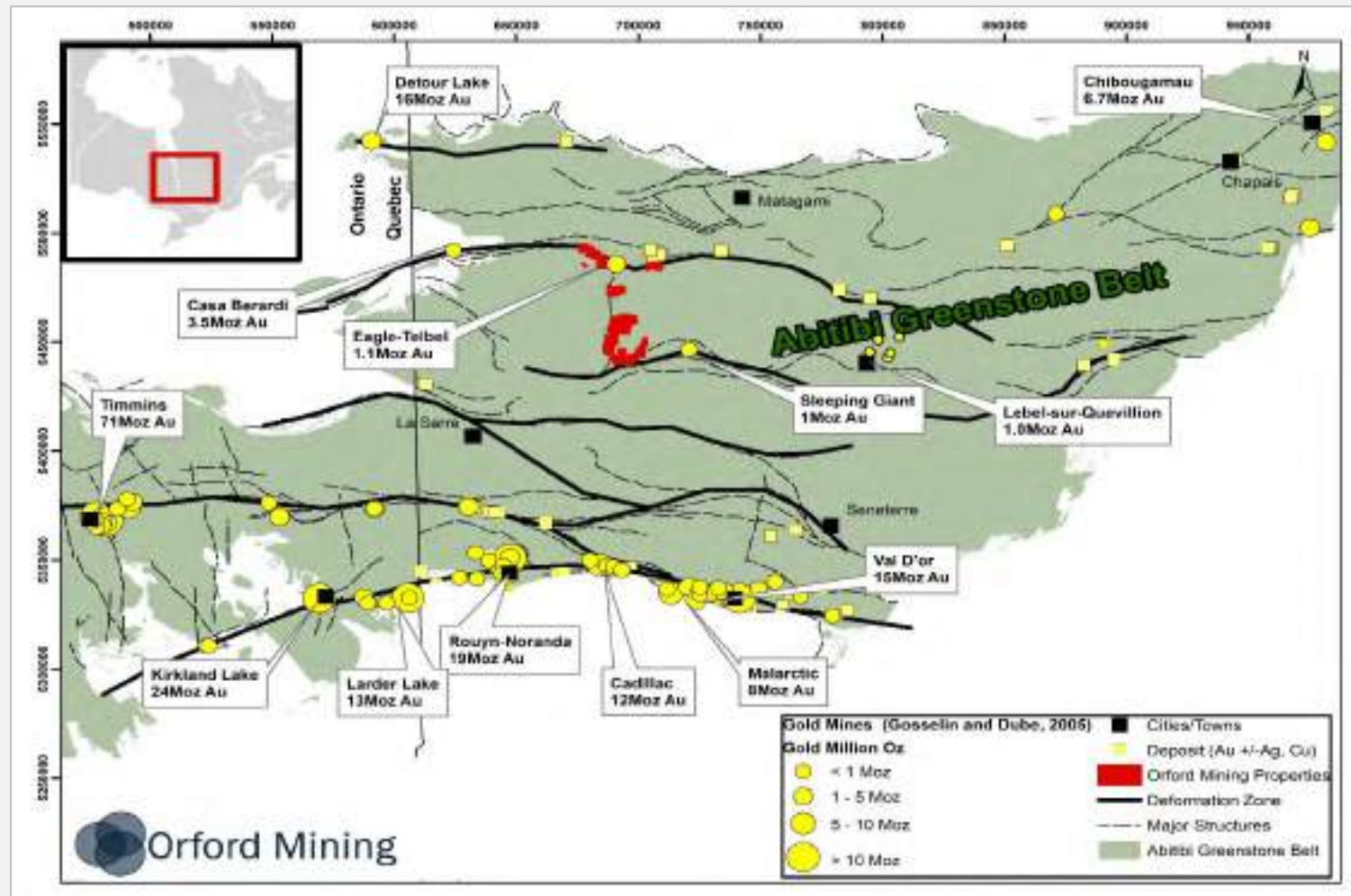
GOLD EXPLORATION IN THE ABITIBI

Joutel District Gold Projects



ORFORD HOLDS LARGE GOLD PROPERTY POSITION IN THE ABITIBI

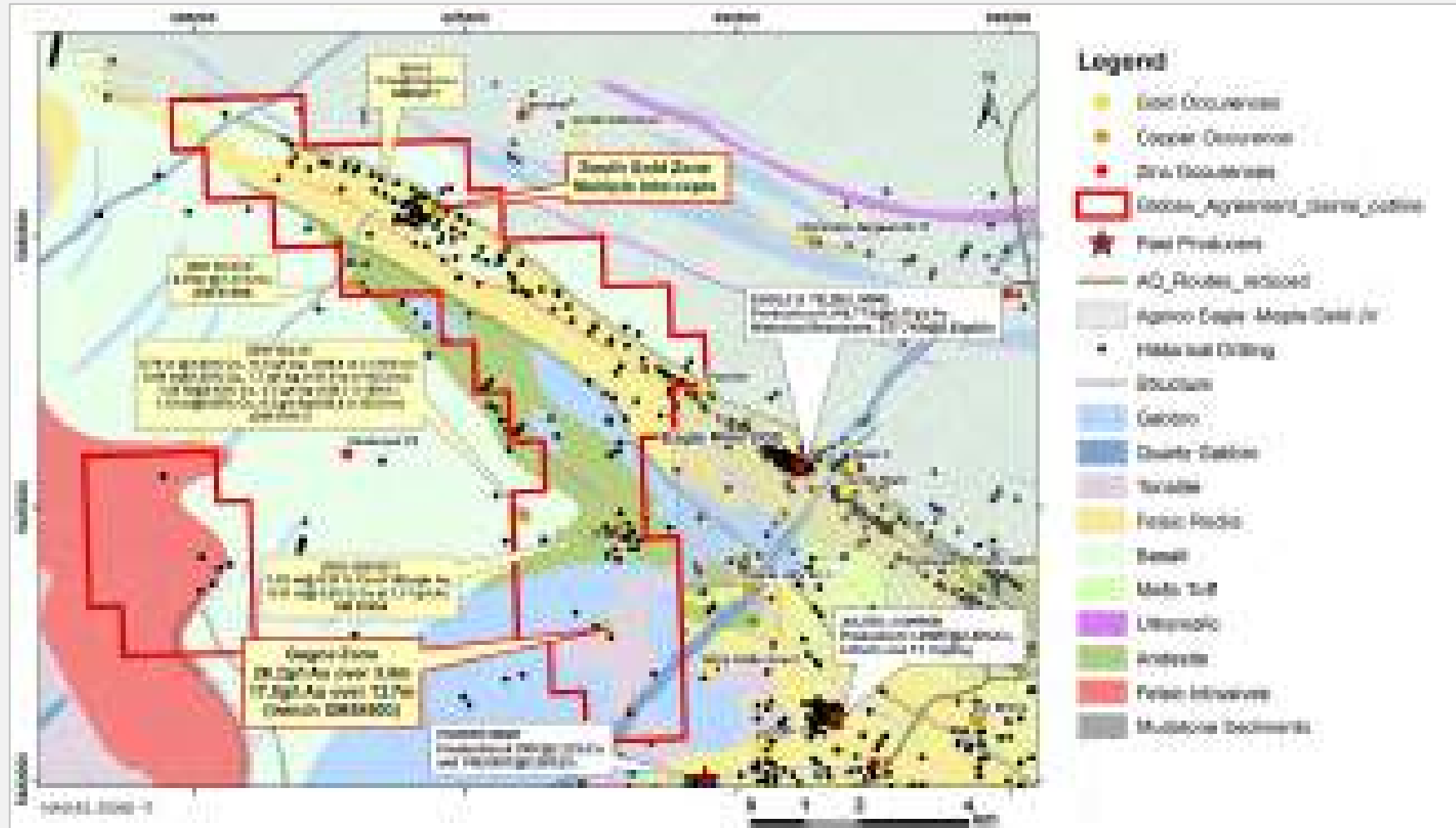
Four properties totalling 260 sq kms in the heart of the Abitibi – vastly under-explored



This information is not necessarily indicative of the mineralization on Orford Mining's properties

JOUTEL – EAGLE GOLD PROJECT

Advanced exploration property next door to past producers



Note that All drilling intervals are down-hole lengths. True thicknesses cannot be estimated with available information

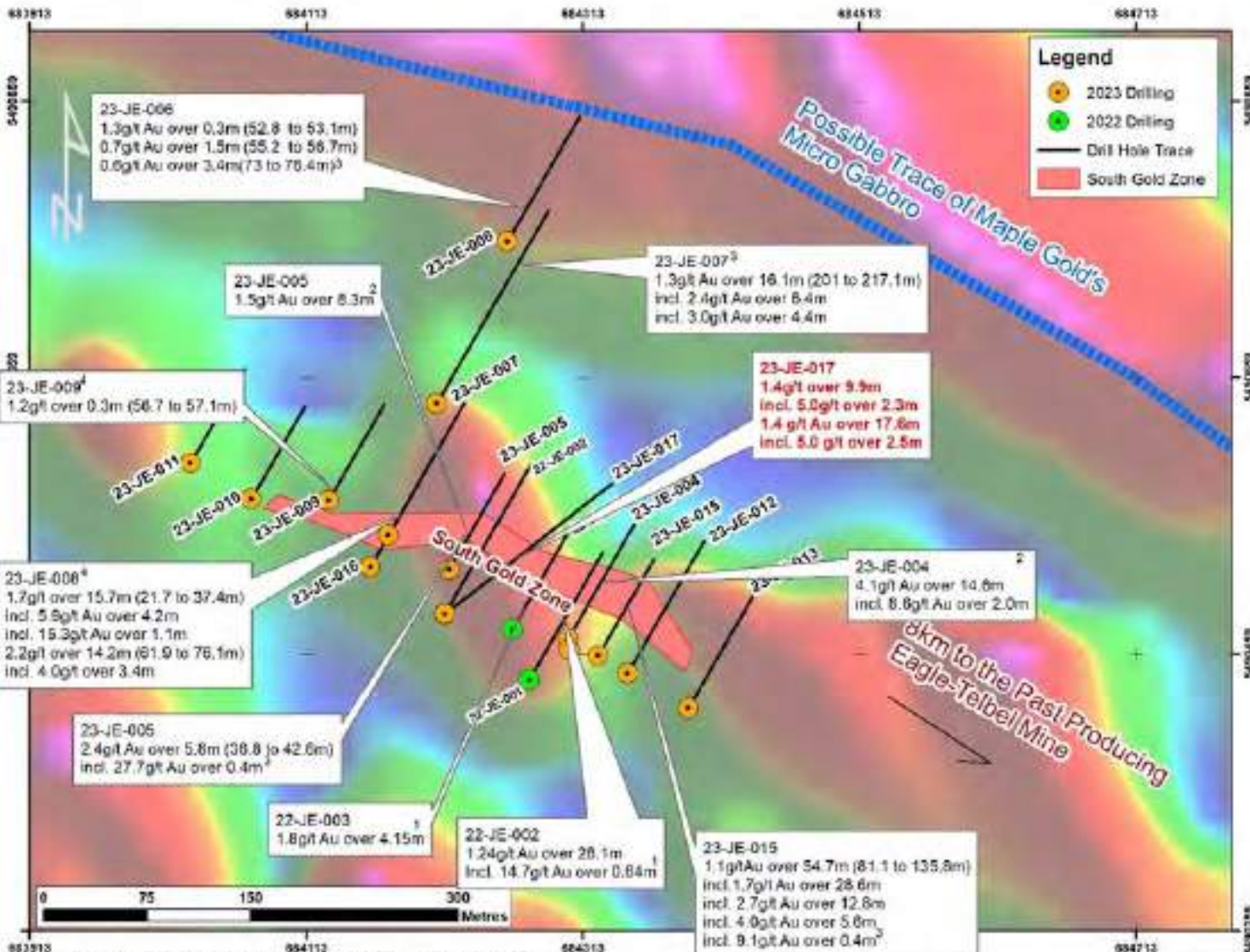
Multiple prospective stratigraphic targets



- Airborne EM to complement previously completed airborne magnetics and to map out both the marker hanging wall graphitic horizon and the Eagle – Telbel mine horizon massive sulphide.
- Magnetics interpretation of the prospective micro – gabrro intersected in adjacent properties on strike with high-grade gold.
- Winter 2023 Drilling program just completed.
 - 2,535 metres in 14 holes to test 400 metre strike and into hanging wall for stratigraphic fence

See Orford Press release dated May 12 and June 7, 2022, and Maple Gold Mines Ltd Dated August 15, 2022. Note that All drilling intervals are down-hole lengths. True thicknesses cannot be estimated with available information

Preliminary Results – 14 hole 2,535 metre program – 8.5 of the 14 holes with results to-date



- **23-JE-004:** Grades of up to 28.7 g/t gold over 0.32 metres included in an interval of 4.1 g/t gold over 14.6 metres
- **23-JE-005:** Grades of up to 1.5 g/t over 8.3, or 2.4 g/t over 5.8 metres including 27.7 g/t over 0.4 m
- **23-JE-008** has reported two thick intersections of gold mineralization: 15.7 metres @ 1.7g/t Au (21.7 to 35.1 metres) and 14.2 metres @ 2.2g/t Au (61.9 to 70.1 metres) which is approximately 200 metres to the north west of hole **23-JE-015** which reported 54 metres @1.1 g/t including higher grade intervals of up to 9.1g/t Au over 0.4 metres.
- **Hole 23-JE-017** intersected multiple thick gold zones such as 1.4 g/t gold over 9.9 metres including 5.0 g/t over 2.3 metres, 1.4 g/t over 17.6 metres including 5.0 g/t over 2.5 metres and 0.80 g/t over 21.3 metres
- **New North Gold Zone:** Hole **23-JE-007** has reported 1.3 g/t Au over 16.1 metres from 201.0 metres including higher grade intervals of up to 4.5g/t Au over 1.1 m, in a previously untested area of the Joutel Eagle Property

Note: The historical assays referred to in this release and shown in this figure were obtained from historical work reports filed with the Quebec Ministry of Energy and Natural Resources and has not been independently verified by a Qualified Person as defined by NI 43-101. True thicknesses cannot be estimated with available information. Composited intervals are reported at a cut-off of 0.5g/t Au.



NUNAVIK REGION CRITICAL MINERALS EXPLORATION

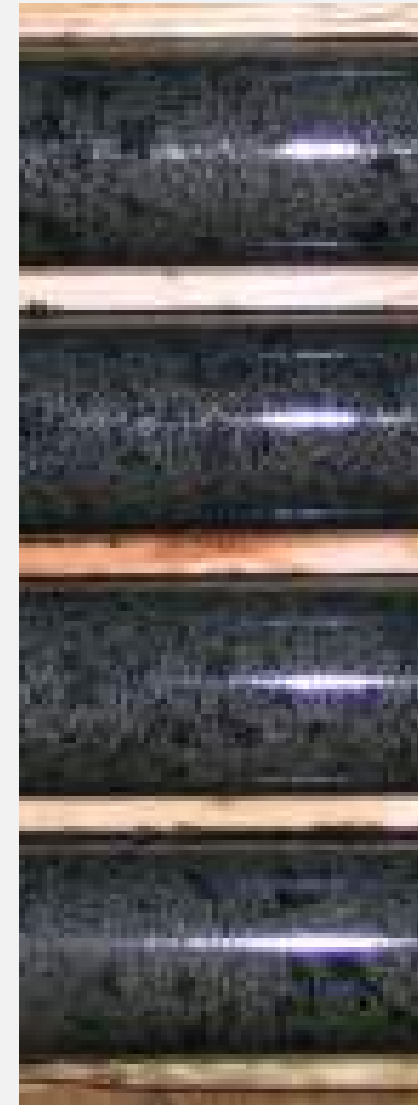
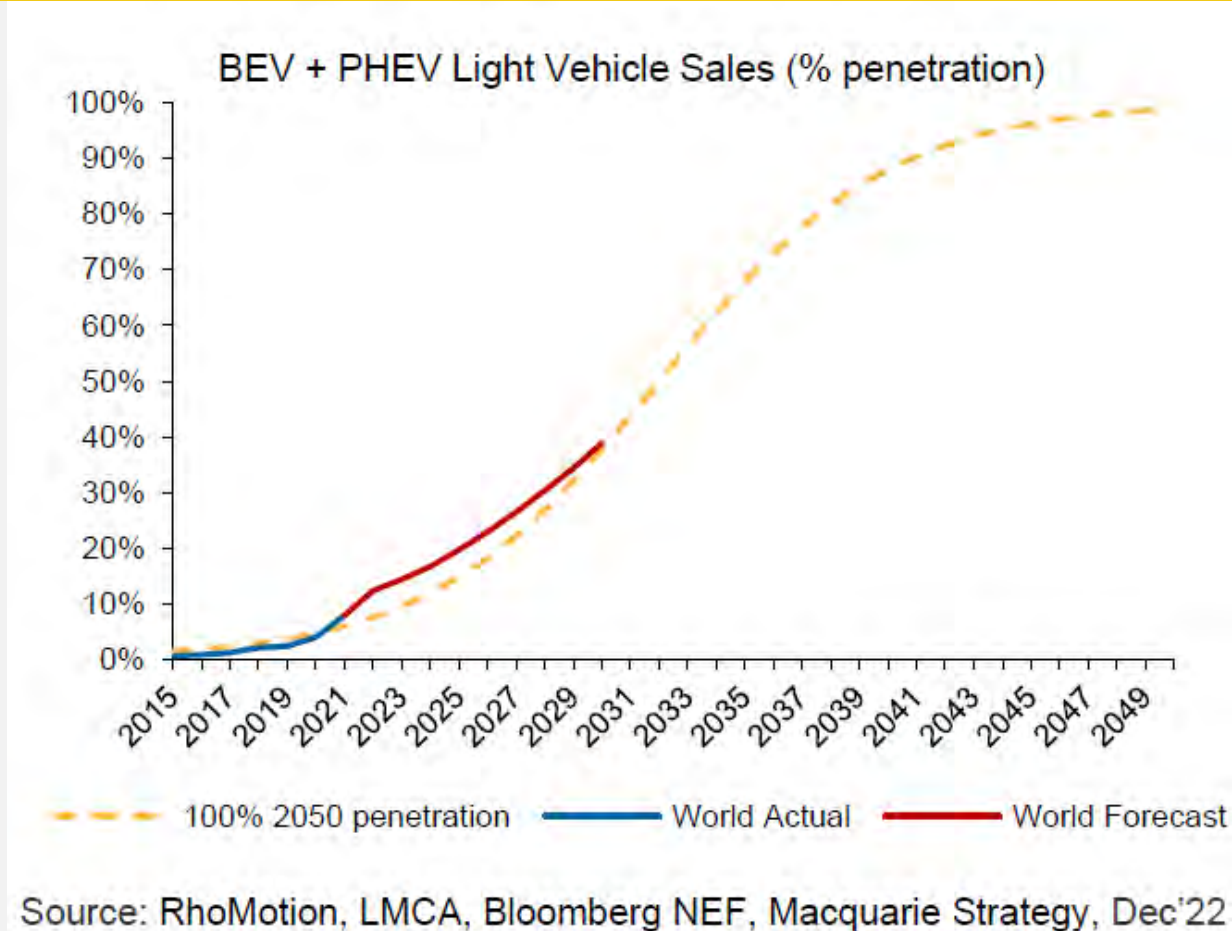
Nunavik Lithium Project and West Raglan Nickel Project



CRITICAL MINERALS MACRO

EV Sales and demand forecasted to continue to grow and drive demand in metals

EV Sales penetration Forecast on an S – Curve Towards 40% Global Sales penetration by 2030

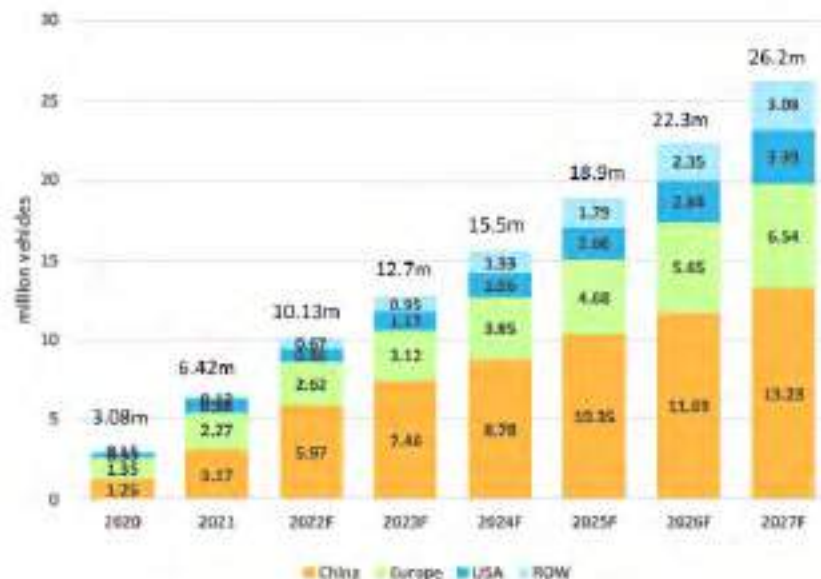


CRITICAL MINERALS MACRO

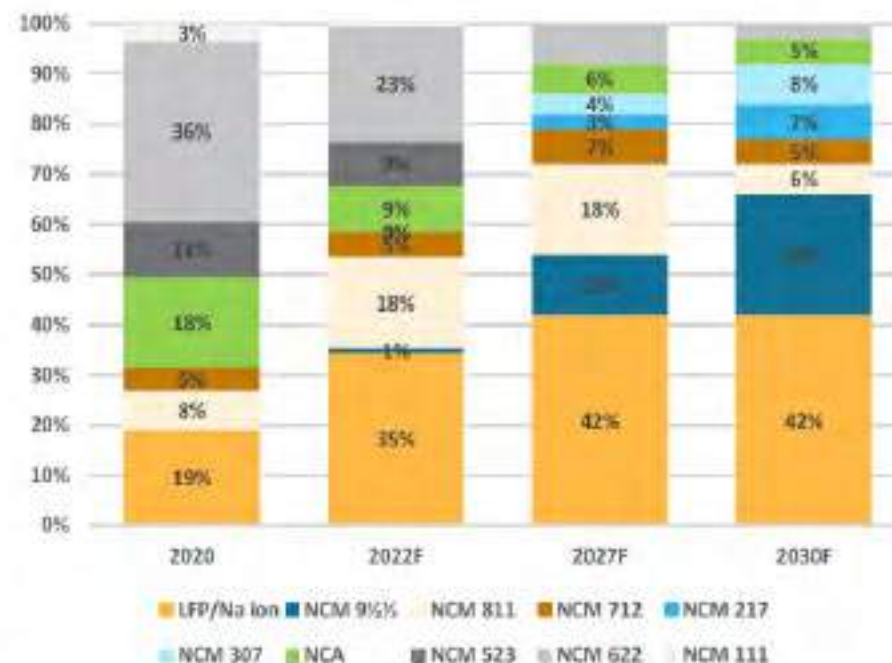
Global EV Sales forecasted to continue to grow with China and elsewhere driving metal demand

Global EV sales to continue strong growth out to 2027 with China remaining more than half the market

Battery type in EV's – LFP revised up again lots of Growth for Ni – rich batteries (lower by not zero cobalt)



Source: Rho Motion, IDC, Macquarie Strategy, December 2022



Source: Rho Motion, Macquarie Strategy, December 2022



CRITICAL MINERALS MACRO

Nickel usage and pricing forecasted to continue to grow due to EV battery demand

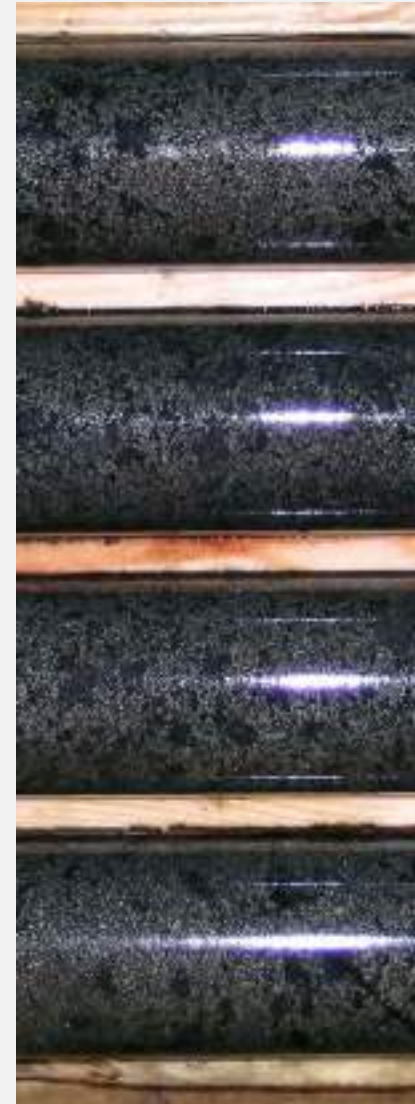
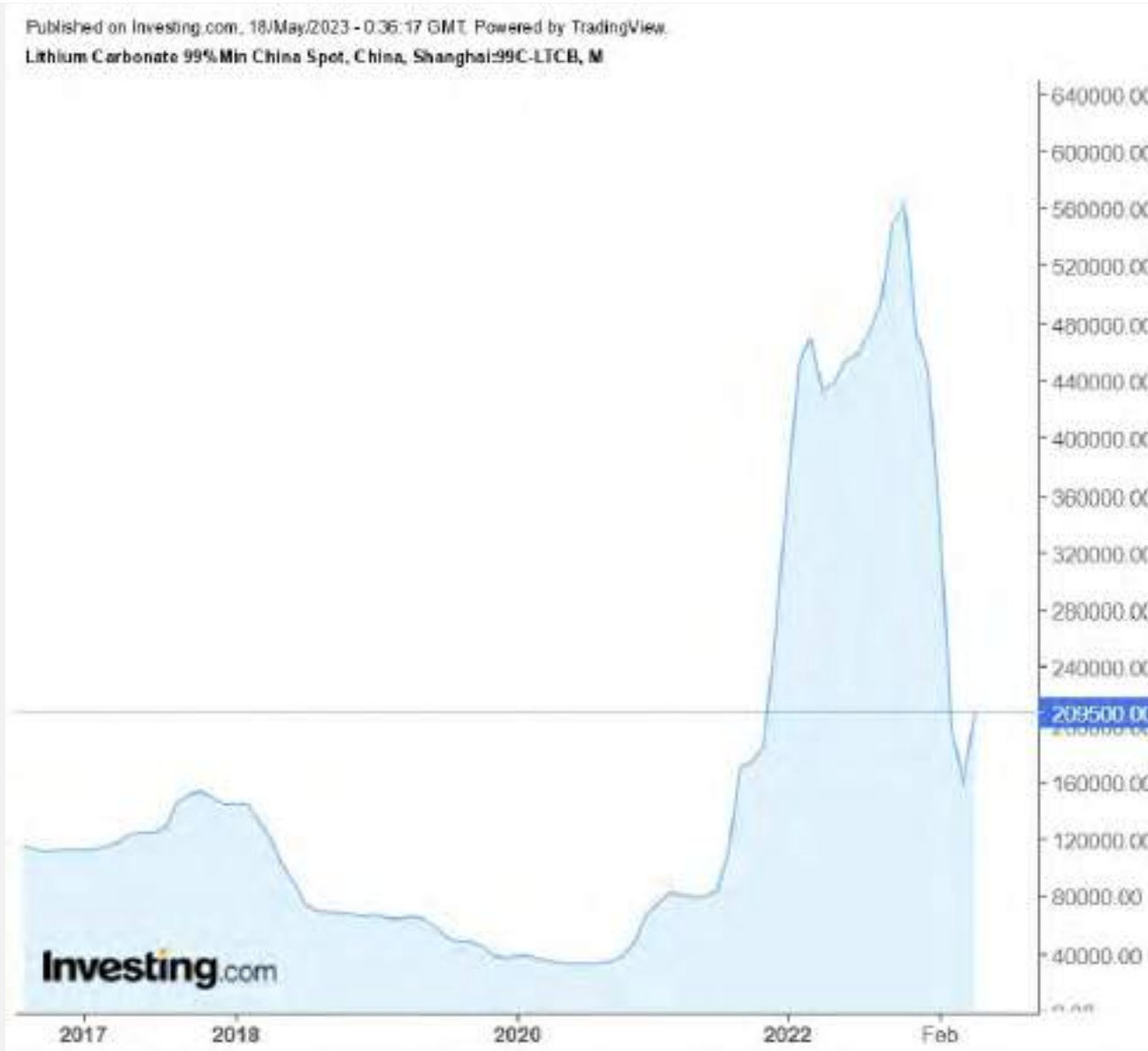
Nickel Usage Demand Change, showing 2021 as an exceptional year for change in Demand Usage

Energy transition lifting nickel demand in a major way to 2025



CRITICAL MINERALS MACRO

Lithium Carbonate pricing remains strong despite a correction in early 2023



LITHIUM POTENTIAL IN THE NUNAVIK, QUEBEC REGION

Well situated in an existing critical minerals hub in Canada with no prior lithium exploration

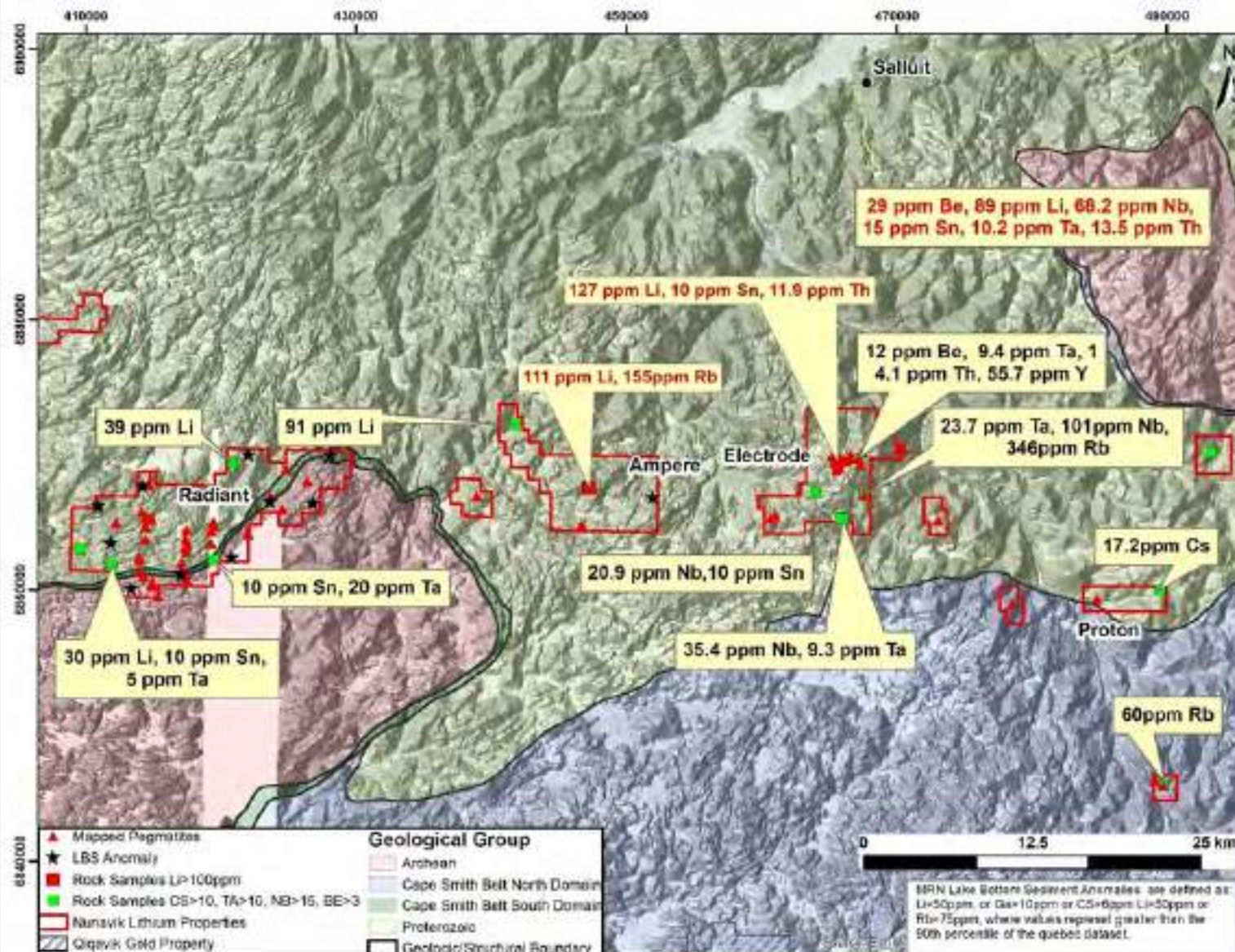


- 455 sq km staked for lithium ~ 7 x the size of the island of Manhattan and total regional property position now at 1,579 sq kms ~ 26 x the size of the island of Manhattan
- New ground staked based on one or all of the following criteria (MRN data):
 - Mapped pegmatite
 - Lake bottom sed with anomalies in 90th percentile or higher for Quebec for elements of interest such as Li, Cs, Rb, Nb and Be.
 - Anomalous grab samples for pathfinders and Li.
 - Geologic boundaries where spodumene-bearing pegmatitic rocks may be emplaced

Note that grab samples are selective by nature and values reported may not be representative of mineralized zones. The MRN Data contained in this release were obtained from Quebec Ministry of Energy and Natural Resources ("MRN") and has not been independently verified by a Qualified Person as defined by NI 43-101

NUNAVIK LITHIUM PROJECT

Mining Nunavik Region Critical Metals North Group of Exploration Properties Regional Geology and DEM.



Strong indicators of Lithium Bearing Pegmatites

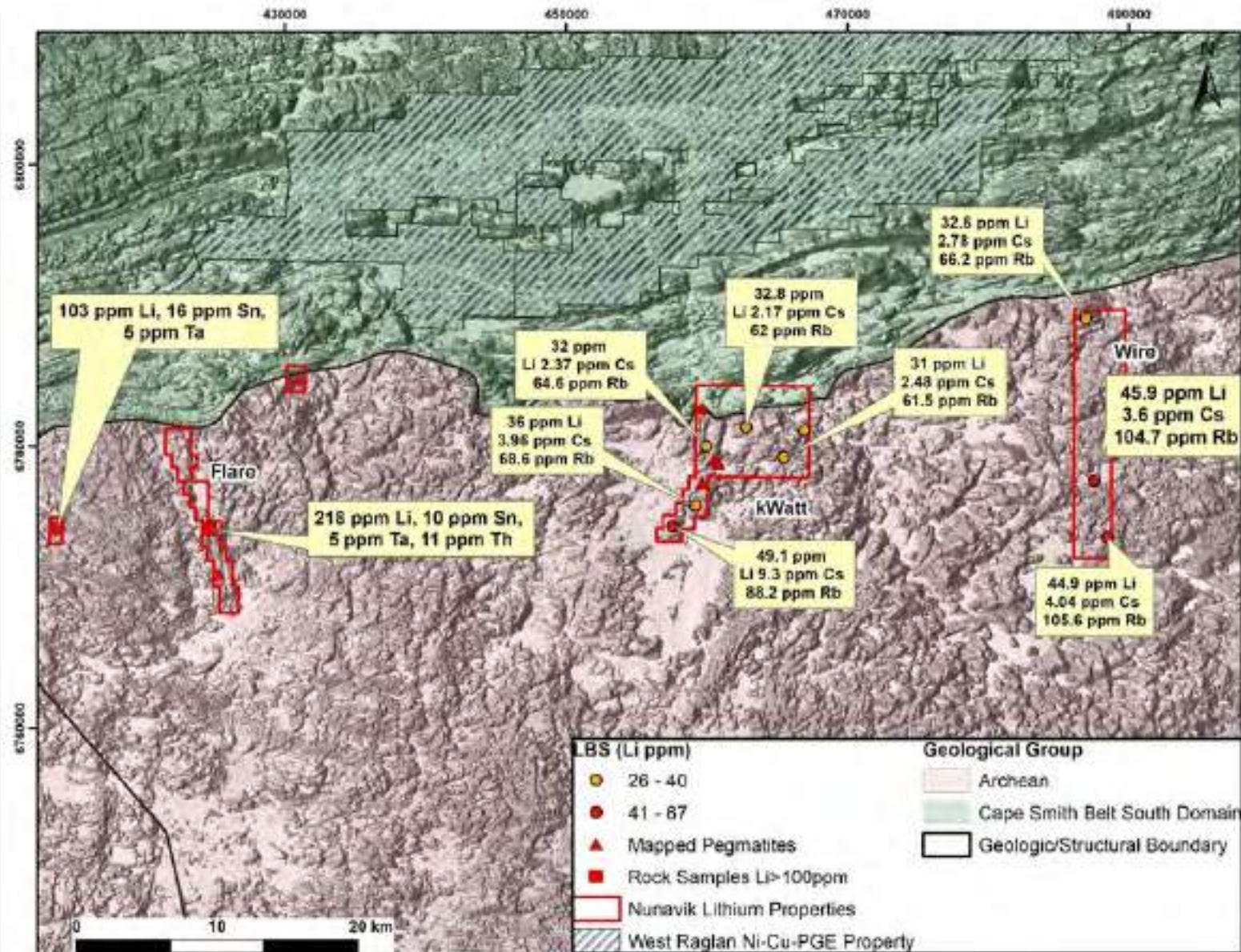
We know we have

- Pegmatites
- Elevated lithium in gab samples
- >90th percentile lithium anomalies in Lake Bottom sediment samples
- Major geological boundaries

Note that grab samples are selective by nature and values reported may not be representative of mineralized zones. The MRN Data contained in this release were obtained from Quebec Ministry of Energy and Natural Resources ("MRN") and has not been independently verified by a Qualified Person as defined by NI 43-101

NUNAVIK LITHIUM PROJECT

Mining Nunavik Region Critical Metals South Group of Exploration Properties Regional Geology and DEM.

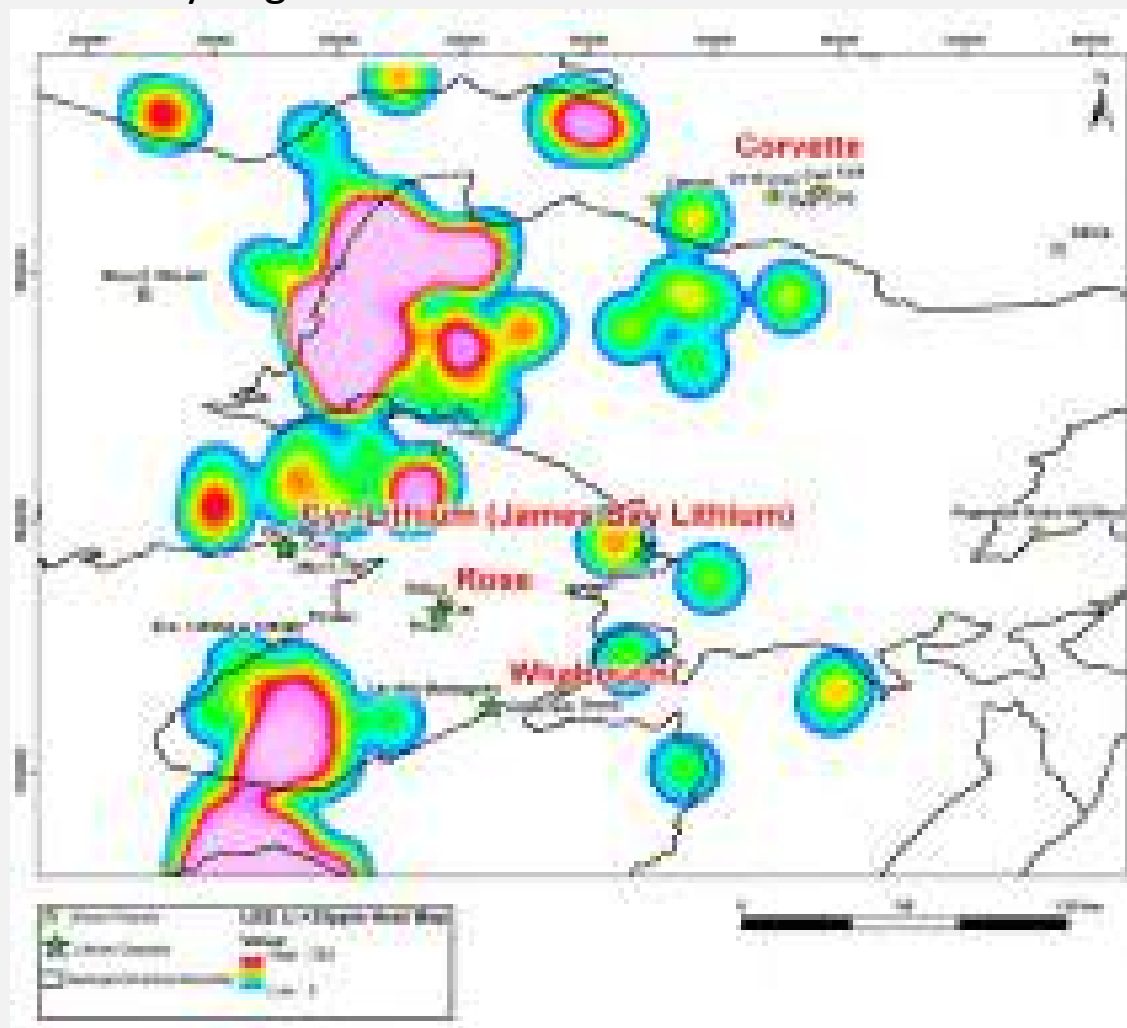


Note that grab samples are selective by nature and values reported may not be representative of mineralized zones. The MRN Data contained in this release were obtained from Quebec Ministry of Energy and Natural Resources ("MRN") and has not been independently verified by a Qualified Person as defined by NI 43-101

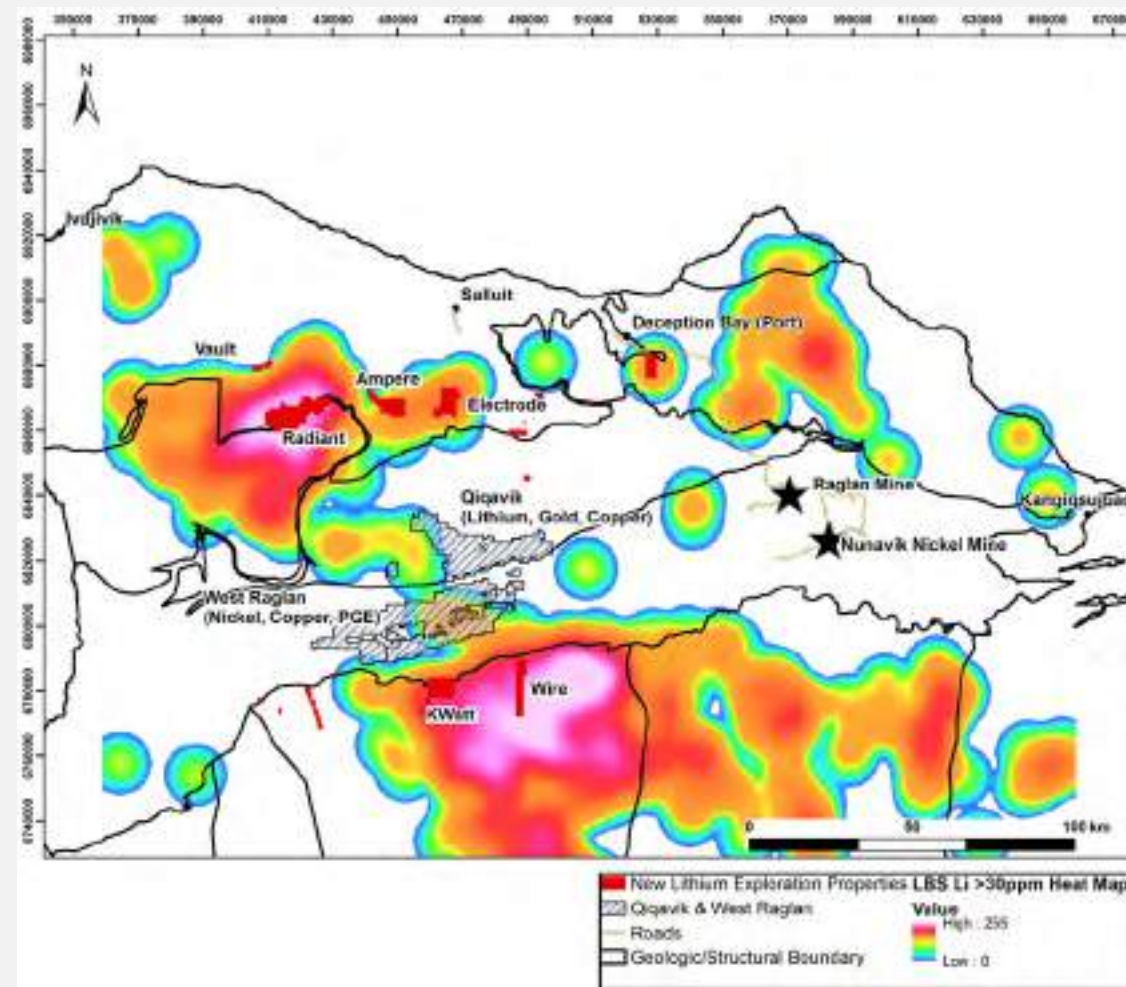
NUNAVIK LITHIUM VS JAMES BAY LITHIUM

Lake bottom sediment anomaly comparison, James Bay to Nunavik

James Bay Region – Lake Bottom Sediments



Nunavik Region – Lake Bottom Sediments



Note: The MRN Data contained in this release were obtained from Quebec Ministry of Energy and Natural Resources ("MRN") and has not been independently verified by a Qualified Person as defined by NI 43-101

WEST RAGLAN PROJECT – HIGH GRADE NI/CU/CO/PGM WYLOO METALS EARN-IN TO LARGE RICH LAND PACKAGE

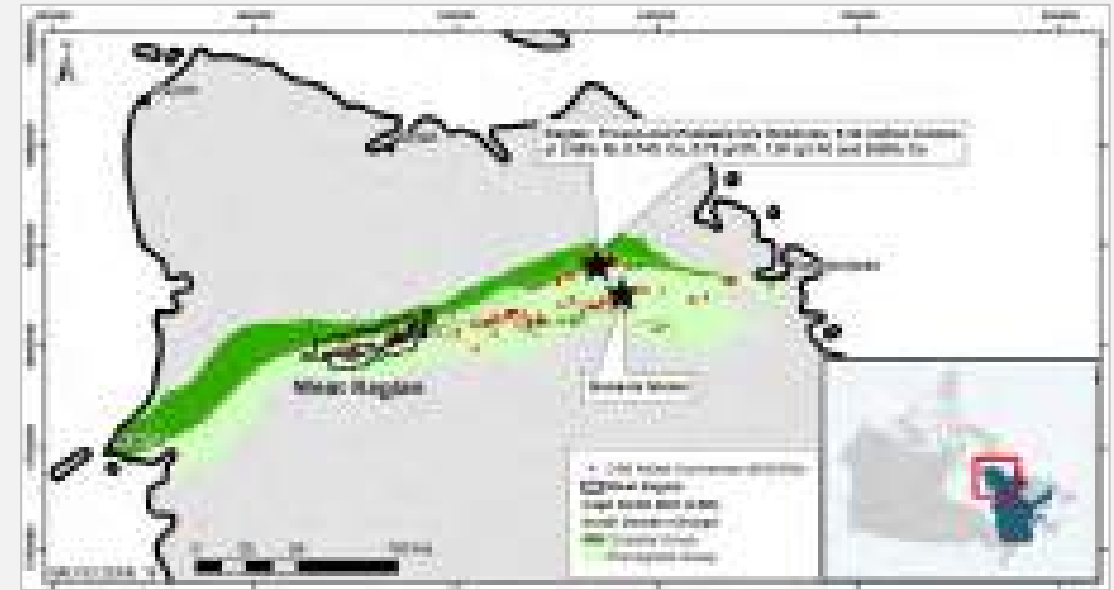
Massive 713 km² property in a prolific, yet underexplored region in Quebec

- 51% Wyloo, 49% Orford Mining, advanced stage Ni-Cu-PGE exploration project covering nearly 707 km² in the Cape Smith Belt, Nunavik, Quebec
- Wyloo notified Orford that it is exercising the second earn-in option to complete an additional C\$5 million in expenditures on the West Raglan property to earn an additional 19% interest in the property (to reach 70%) by January 18, 2026.
- Cape Smith Belt is host to prolific high-grade polymetallic nickel deposits and includes two operating mines: Raglan and Nunavik Nickel
- Located ~80 km from Glencore's Raglan Mine
 - Raglan is a first quartile cash cost nickel operation
 - One of the highest ore grades among significant global nickel deposits (Raglan's Proven and Probable Reserves as of Dec. 31, 2021, stood at 9.32 Mt at 2.66% Ni, 0.74% Cu, 0.79 g/t Pt, 1.91 g/t Pd and 0.06% Co¹)
- Orford executed an earn-in agreement with Wyloo Metals in January 2021 on West Raglan.
 - Wyloo can earn up to 80% in the West Raglan Project by spending \$25 million and completing a feasibility study and making a cash payment to Orford.

Note The information disclosed herein in respect of the West Raglan Property is based on the independent report of Clement Dombrowski, P.Geo of IOS Services Geoscientifiques Inc. titled "NI 43-101 Technical Report on West Raglan Project, Northern Quebec, Canada" effective February 20, 2017

1. Source: Glencore Resources & Reserves Dec 31, 2021

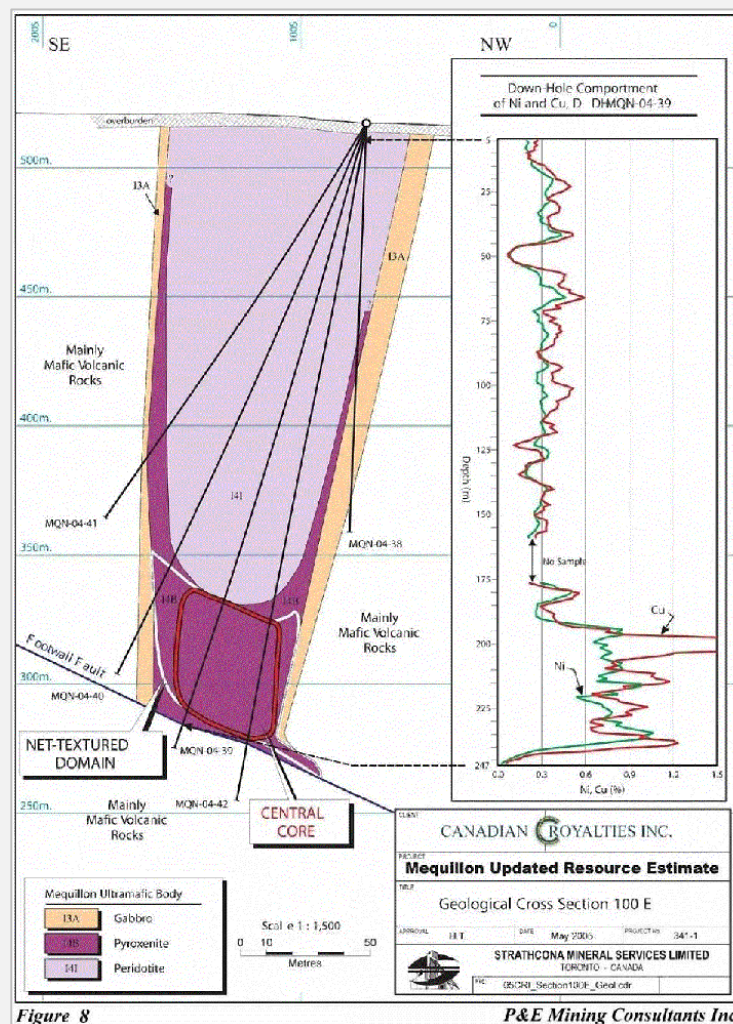
Location in the Cape Smith Belt



Ground views of West Raglan property

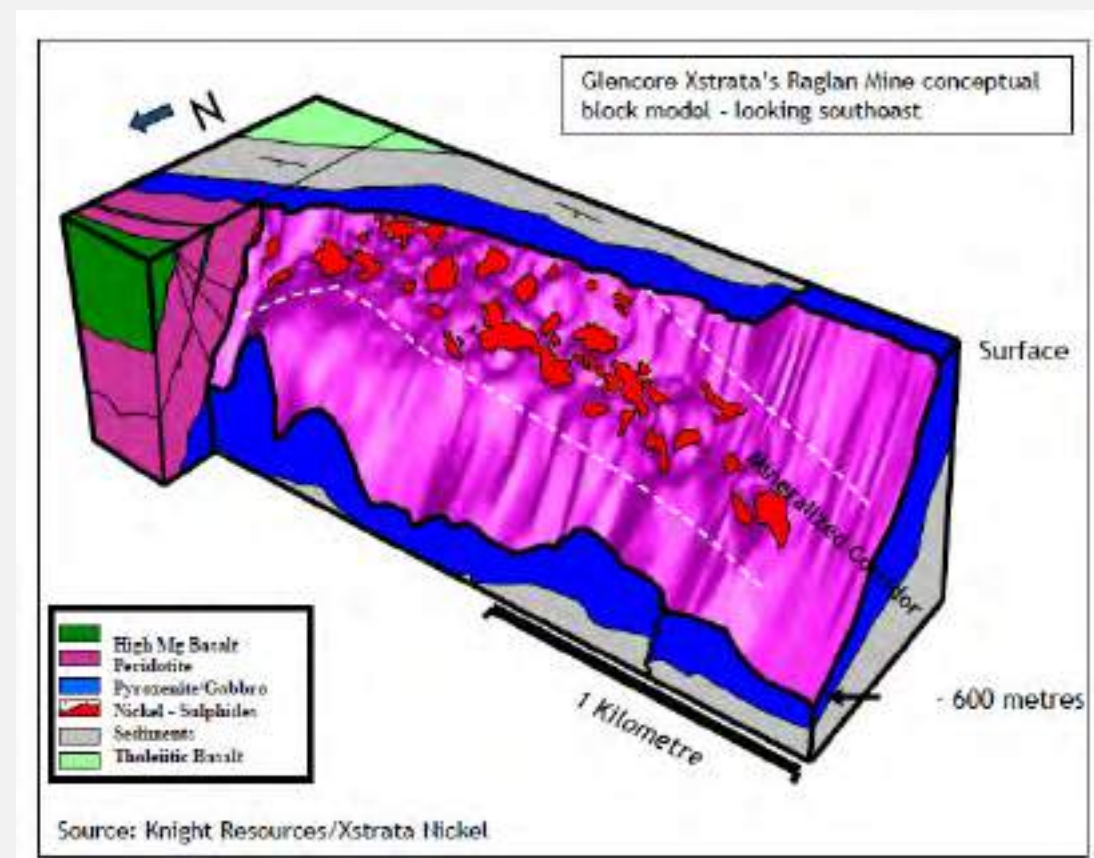


WEST RAGLAN NI/CU/PGM PROJECT – GEOLOGICAL MODELS



Canadian Royalties' Mequillon deposit is an ultramafic dyke 1.5km x200m (peridotite core, pyroxenite and gabbro on margins, hosts net-textured and massive sulfides (Ni:Cu 1:1)

Raglan Mine hosts 190 individual sulphide lenses in 12 distinct zones; four zones are currently in production feeding a central mill facility (Ni:Cu, 3:1)

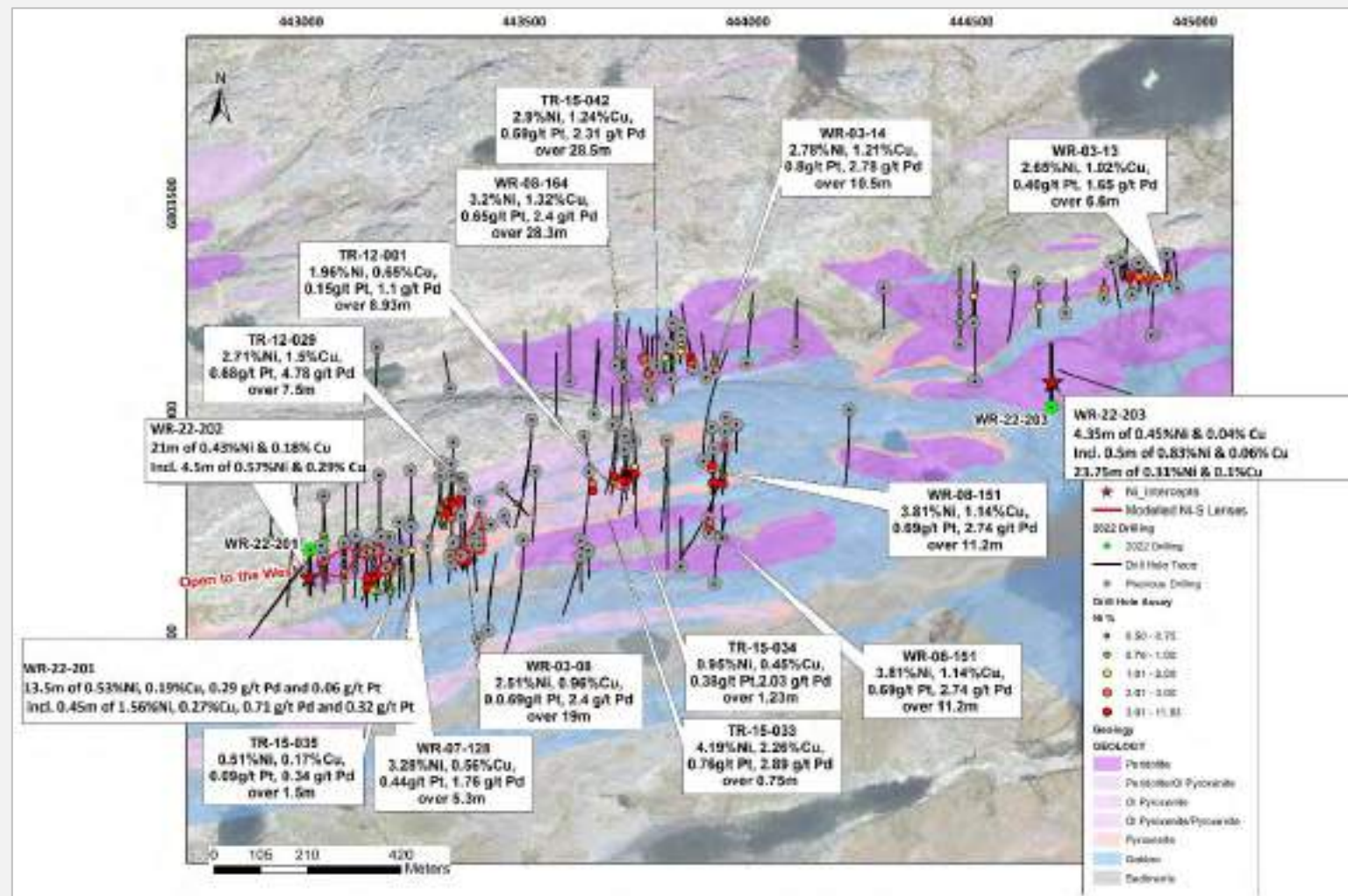


Source: Knight Resources/Xstrata Nickel

WEST RAGLAN NI/CU/PGM PROJECT

Frontier Zone - three holes drilled in 2022 program with Ni sulphide in all three

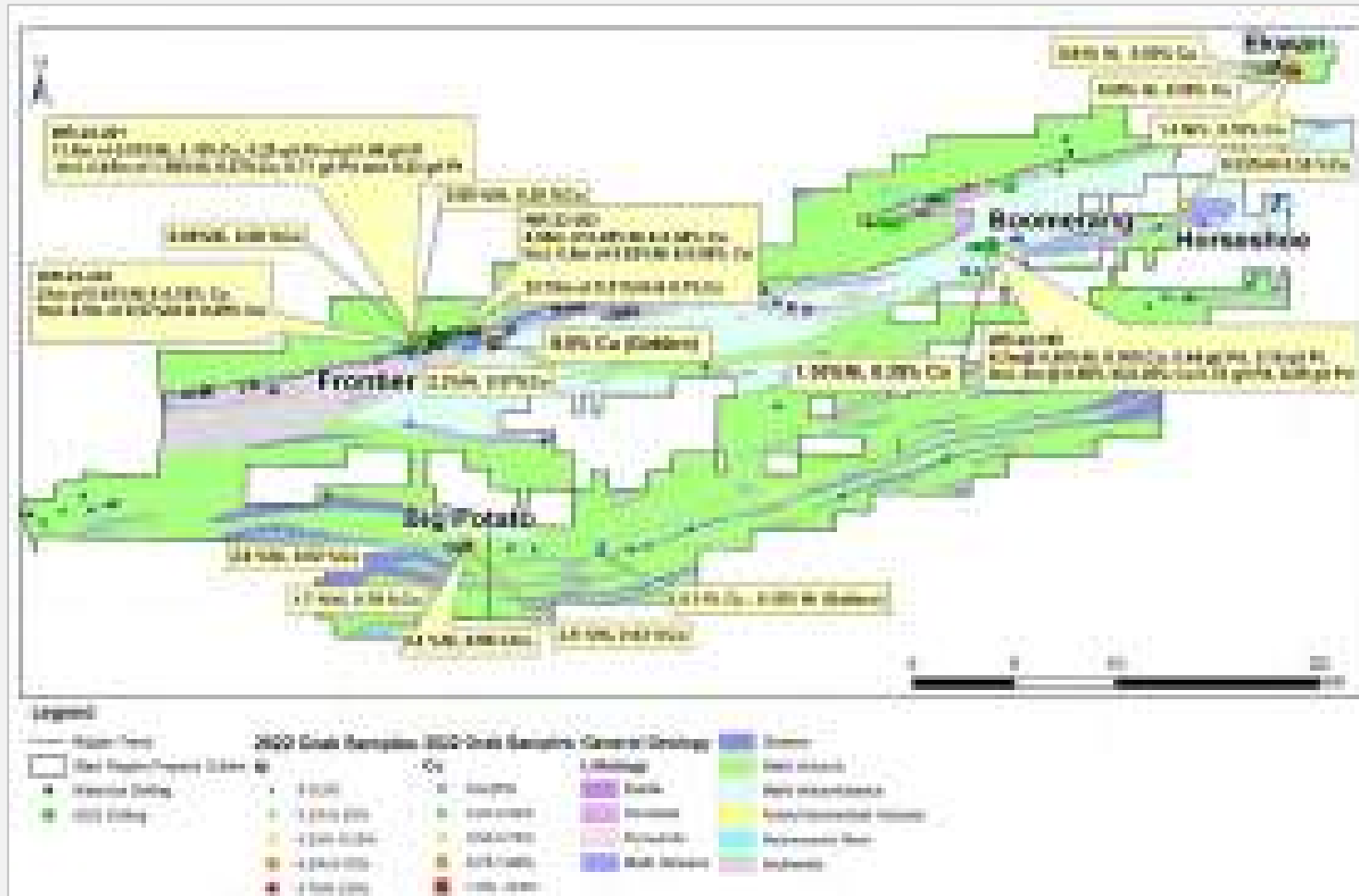
- Historically, the Frontier Area of West Raglan hosts the majority of the West Raglan Drilling
- Several Raglan Styles Nickel-Sulphide pods have been discovered.
- Raglan-type grades and intercepts are shown on this map.
- In 2022 Drilled three extensional type targets on west and east sides with strong SQUID EM targets and hit nickel sulphides in all three.



Note that All drilling intervals are down-hole lengths. True thicknesses cannot be estimated with available information

WEST RAGLAN NI/CU/PGM – 2022 WORK

2022 Diamond Drilling program – 2,589 metres in 9 holes testing Squid EM targets



Note that grab samples are selective by nature and values reported may not be representative of mineralized zones. Note that All drilling intervals are down-hole lengths. True thicknesses cannot be estimated with available information

ORFORD MINING

Local Community Involvement

Fostering strong relationships with government, local communities and First Nations Groups



Open dialog with local communities in Nunavik & Abitibi

Representatives of Salluit, Akulivik and Kativik Regional Gov. (KRG) have visited Camp Chukotat and the West Raglan & Qiqavik Properties

Previous to 2021 (on hold due to COVID restrictions): Working with Salluit & Akulivik Landholding Corporations to hire local workforce during summer exploration programs in Nunavik. Inuit hiring and training in each exploration program.

2022, 19% or \$1.6 million of exploration expenditures were with Nunavik Inuit Enterprises

Identifying and notifying communities and Avataq of archeological sites

Provided in-kind support to KRG for abandoned mineral exploration site rehabilitation in Nunavik

Work with the Coopérative de Solidarité de Pikogan on contracts for the Joutel Area Work

6% of 2021 exploration expenditures for the McClure East and Joutel South properties in the Joutel Area were with the Coopérative de Solidarité de Pikogan



ORFORD MINING

Reasons to Invest

Orford Mining has potentially discovered a new gold district, Qiqavik, next door to its more advanced nickel project, West Raglan, in the highly prospective and underexplored Cape Smith Belt in Northern Quebec. We have recently added a large land base covering Lithium targets across the Nunavik Region. Orford is also actively exploring the Joutel region in the heart of the Abitibi for gold.

Strong strategic investor support

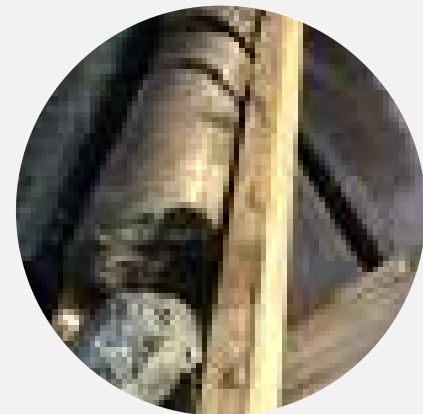
Massive land position in two underexplored gold districts with great prospectivity

Large new land tenure covering very strong Lithium targets in Nunavik

Strong Financial and Technical Partner on West Raglan Nickel Project

Safe, proven mining jurisdiction

2023 Exploration program on 4 projects with about **\$7.6 million** spent including earn in expenditures by Wyloo on the West Raglan Ni-Cu-PGM Property



UPCOMING EVENTS AND NEWS CATALYSTS

Events

June 19-21, 2023:	The Mining Event of the North, Quebec City, Quebec
May 30, 2023	Explor – Val d’Or Quebec
September 2023	Precious Metals Summit, Beaver Creek Colorado
September 2023	Denver Gold Forum, Colorado Springs
November 2023	Zurich Precious Metals Summit

News Catalysts

May 2023	Qiqavik Program release
May 2023	Joutel Eagle Winer 2023 Drilling results
July 2023	Qiqavik Gold Program start
July 2023	Nunavik Lithium Program start





TSXV: **ORM**
OTC: **ORMFF**

THANK YOU



DAVID CHRISTIE

President & CEO

dchristie@orfordmining.com

647-255-8037

2 St. Clair Avenue West, 18th Floor

Toronto, ON

Canada M4V 1L5

www.orfordmining.com

